

阿迪亚·诺瓦立：重要的她

# Aditya Novali: Significant Other

**OPENING:**

8 September 2018, 5-8pm

**EXHIBITION PERIOD:**

9 September - 21 November 2018

# Aditya Novali: Significant Other

ShanghART Singapore is pleased to present Significant Other, a solo exhibition by Indonesian artist, Aditya Novali, featuring an entire series of new works. The exhibition opens on 8 September 2018 and will be on view from 9 September to 21 November 2018.

Aditya Novali's new series of work seeks to explore the universal experience of coming to terms with the numerous uncontrollable facets of life. Novali's inspiration came from his daily occurrences and observations of his sister whom is a person of special needs. The two individuals connected by blood are seemingly disconnected on the surface in their communication and interactions. Living their lives as what seems to be two parallel lines, this disconnection forces Novali to ponder about their co-existence, eventually realising the presence of a symbiotic relationship between them, where one's emotions bounces off the other. He later understands this relationship as a hidden driving force behind some of his earlier works.

Novali's sister derives peace from drawing daily, having produced hundreds of drawings. Recognising the uncanny resemblance between his sister's drawings and his works, Novali was inspired to collaborate with his sister in order to discover a similar ground between the both of them, by adopting her drawings into his works.

Aditya Novali constantly investigates social issues such as urban living and identity throughout his art practice. Through this series, he challenges the notions of normality and identity in the everyday. Using his closest social entity, his sister and family, as a basis of his investigation, Novali draws on the issues they face as a family, such as discrimination, the pressure to conform, and being marginalised by society. The fluidity in Novali's new works reflects how he deals with such societal constructs, where the public often attempt to reconstruct individuals who are different to fit into what we habitually perceive as the norm.

He frequently uses methodological techniques to create margins, develop rules and instructions, taking full control of the making process. Novali believes that abstract works are guided by certain perimeters and do not come freely from emotions – they follow a logical process which he systematically identifies and strictly adheres to. Despite his constant attempt to deviate from his typical orderly systems, he tends to veer back to a similar process. Significant Other will see the result of his endeavor in freeing himself from his rules.

The exhibition features two groups of works – the first being a series of sculptural forms fused with video projections of Novali's sister's drawings, where colours and shapes intersect and blend together with flashings of light. The other group utilises Augmented Reality technology to layer drawings by Novali's sister over his own, crafting a sense of absence and presence, connection and disconnection. Both series challenge Novali's former methods by limiting logic. Allowing his sentiments to lead him in the most organic way, this is the beginning of how Novali searches for an approach to reconcile the complex emotions towards his significant other.

## 阿迪亚·诺瓦立：重要的她

新加坡，2018年8月——香格纳新加坡荣幸呈献印尼艺术家阿迪亚·诺瓦立个展，《重要的她》，展出一系列的新作品。展览将于2018年9月8日开幕，并持续到2018年11月21日。

阿迪亚·诺瓦立展出的作品探讨了人们在面对生活中非能力范围所及的事情所得到的体会，灵感源自于有特别需要照顾的妹妹的日常互动和观察。虽然作为一对有血缘关系的兄妹，但他们在日常沟通和互动上都不通畅，这促使了诺瓦立对于他们共存的状态进行思索，从而发现了似乎生活在两条平行线上的他们拥有共生关系，并且都被彼此的情绪所感染。他更把这个关系理解为他之前一些作品里隐藏的动力。

诺瓦立的妹妹从日复一日的绘画中沉淀她的心境，得到心灵的寄托与安宁，至今已创作了上千张的绘画。相比于自己的作品，诺瓦立从他妹妹的绘画中意识到了不可思议的相似之处并受到启发。他试着将他妹妹的绘画融入自己的作品中进行艺术结合，并期望通过这个结合找到共性。

阿迪亚·诺瓦立的作品往往围绕着一些社会议题展开讨论，例如城市生活中的身份与观念。而他这个系列的作品挑战了我们对于生活认知和身份认定。他以他的妹妹和家庭作为中心，审视了他们家庭所面对的问题，例如他人对有特殊照顾需求的人的歧视，为顺应社会规范所产生的压力，以及被社会排挤的现实。现今社会中，人们被迫成为被视为规范的摹本，强行改变他们的性格和行为。诺瓦立新作品里的流动性则反映了他对这种社会状态的想法和态度。

一直以来，诺瓦利的艺术品制作过程里都包括自己制定的一套法则，以明确的步骤和规矩完完全全地主导制作过程，创造出一系列赋有规律性的作品。诺瓦立深信抽象作品并非单是艺术家任由情绪引导的结果，而背后也存在着某种规范。这是他在创作时向来都严格遵守的系统性逻辑性的一个过程。纵使他尝试摆脱他以往有条有理的创作方式，他发现自己似乎不能完全抛开自己的认知而单凭感情去创作。《重要的她》里的作品呈现的便是他企图从自己的规则自我释放的成果。

展览的作品分为两组：第一组作品运用了投影技术把他妹妹的绘画与他自己的雕塑作品融合，在闪动的灯光中，杂乱而光鲜亮丽的颜色和简单且线条分明的形状形成了鲜明的对比，碰撞出巧妙的火花。第二组作品应用了扩增实境（augmented reality）科技，把他妹妹的绘画重叠在自己的作品上，营造了模棱两可，若隐若现的感觉。两组作品都有别于诺瓦立以往作品里充满理性逻辑的作风，挑战了他的创作方式。通过这个形式，他选择了面对自己心里的复杂情绪，踏上了找寻可以与“重要的她”的内心世界相逢的道路。

The following works features Augmented Reality. To have the full experience, please follow the steps below:

1.



Install the  
**Artivive** app

2.



Hold your smartphone  
**in front** of the artwork

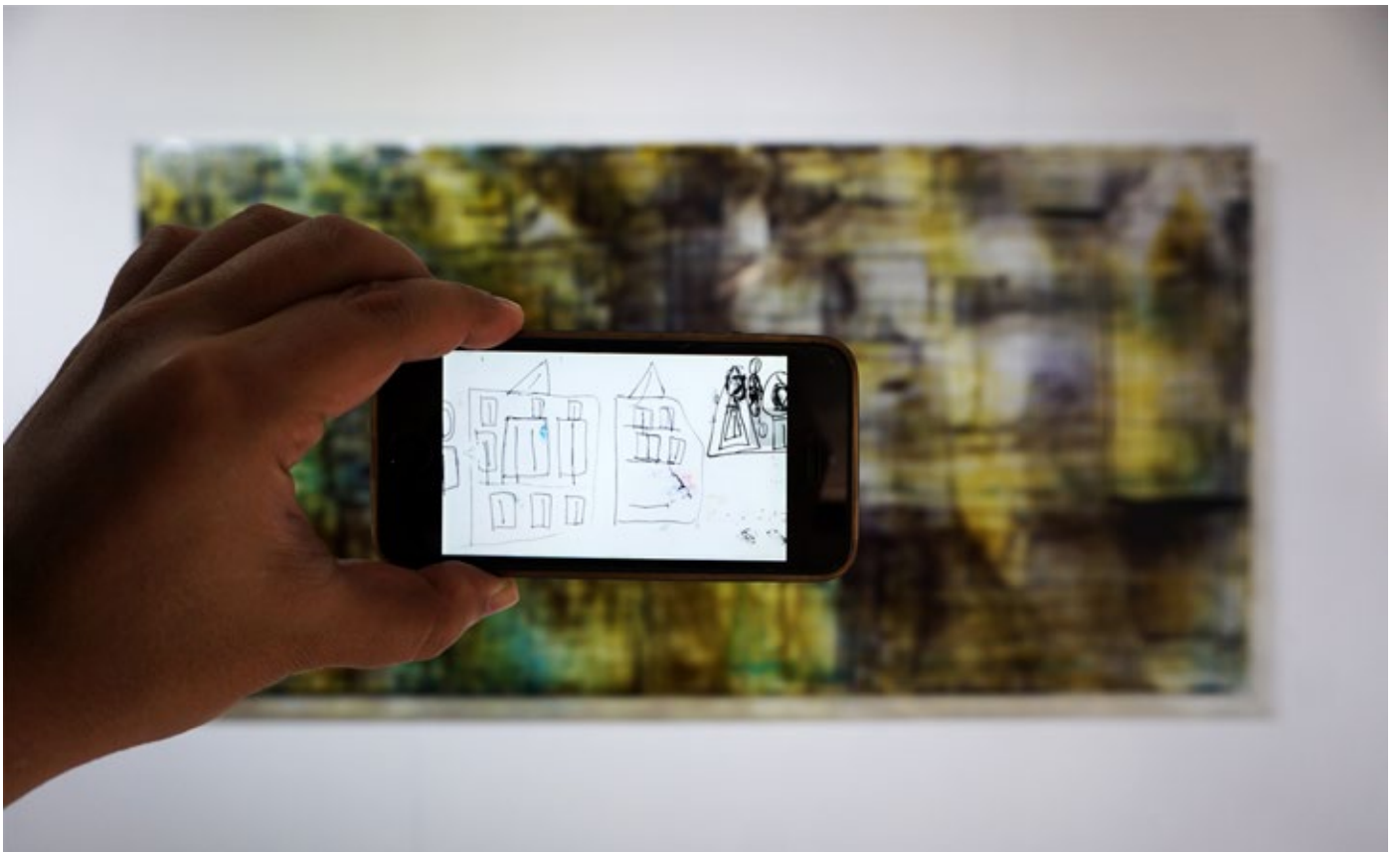


(sound icon | b/w) green, 2018  
Painting | Mixed Media

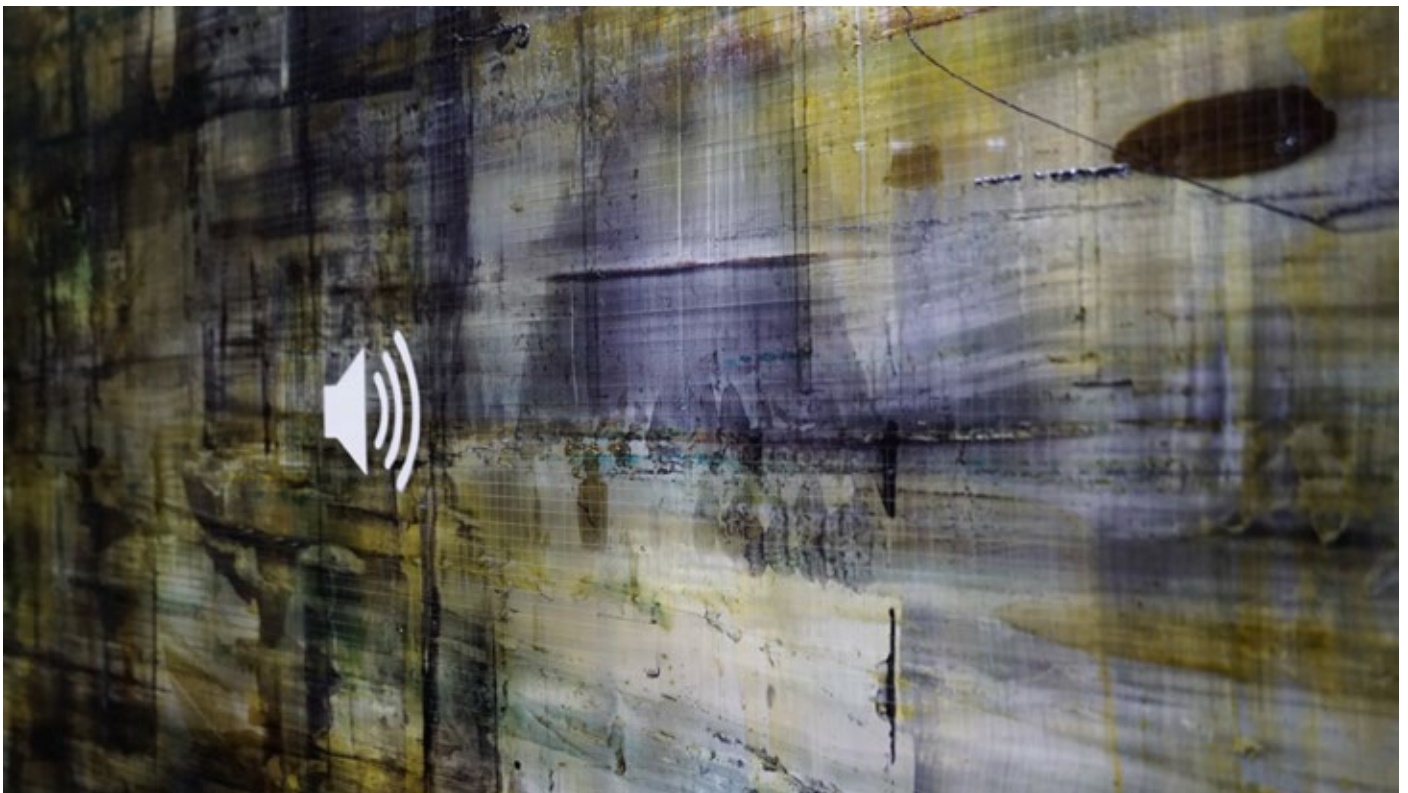
Ink, paint on plexiglass, wood, multi board, zinc plate, single-channel video in augmented reality

103.5 × 219 × 7cm

OT\_8652



Augmented Reality view



Details



(battery icon | card) blue, 2018  
Painting | Mixed Media

ink, paint on plexiglass, wood, multi board, zinc plate, single-channel video in augmented reality

114.5 × 114 × 5cm

OT\_0339

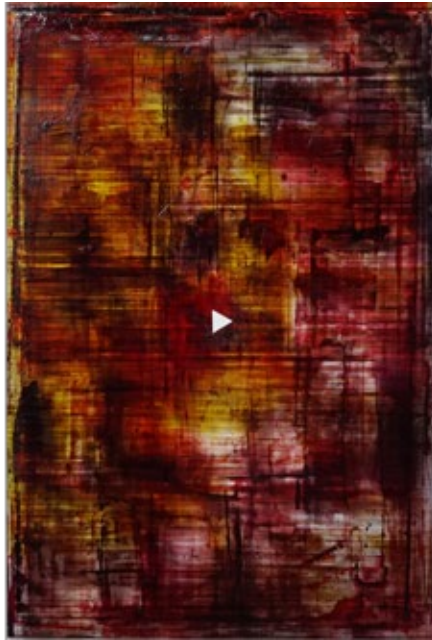


Augmented Reality view

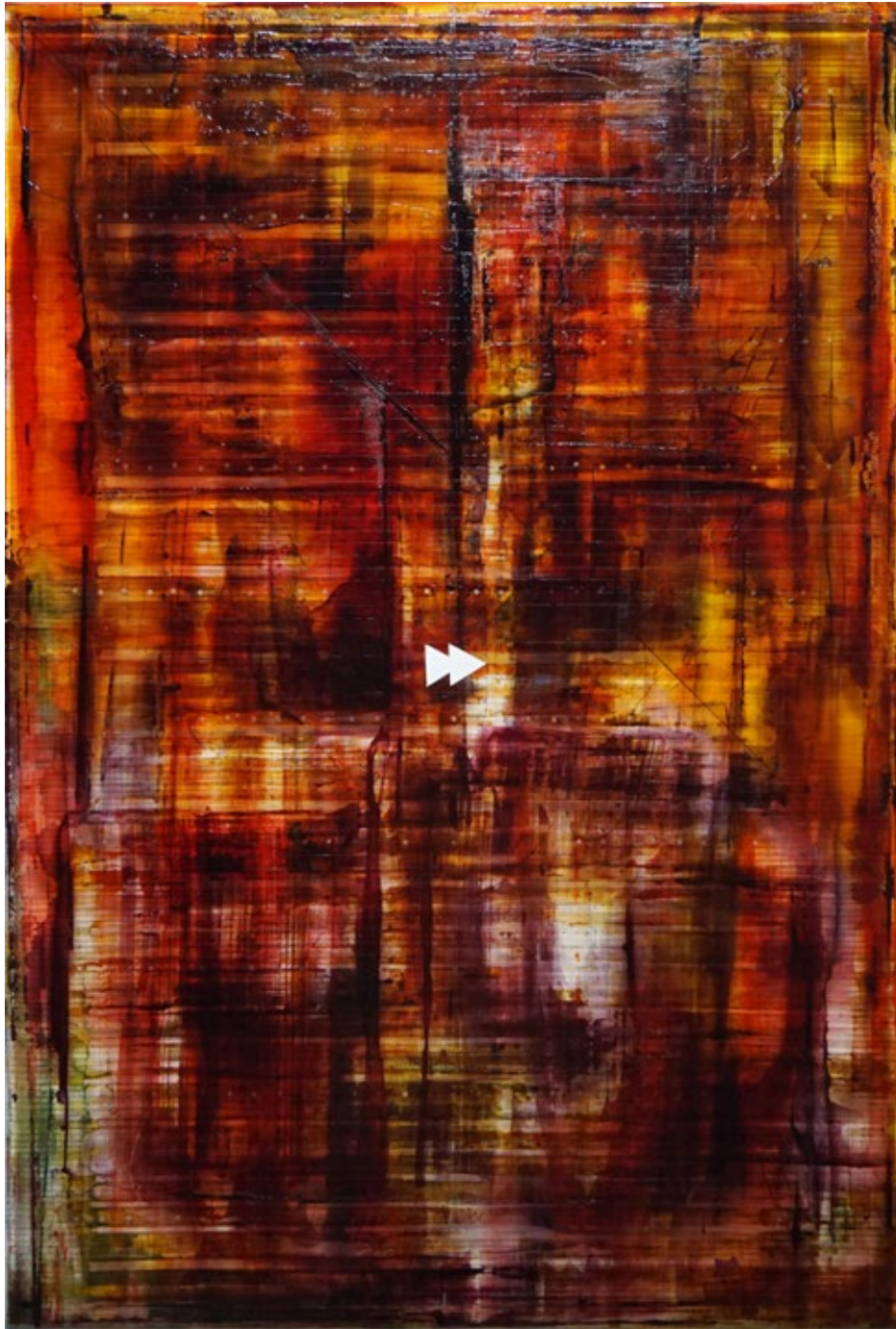


Details





(play-fast forward-forward icon | calendar) red set, 2018  
OT\_2888, OT\_2810, OT\_2490



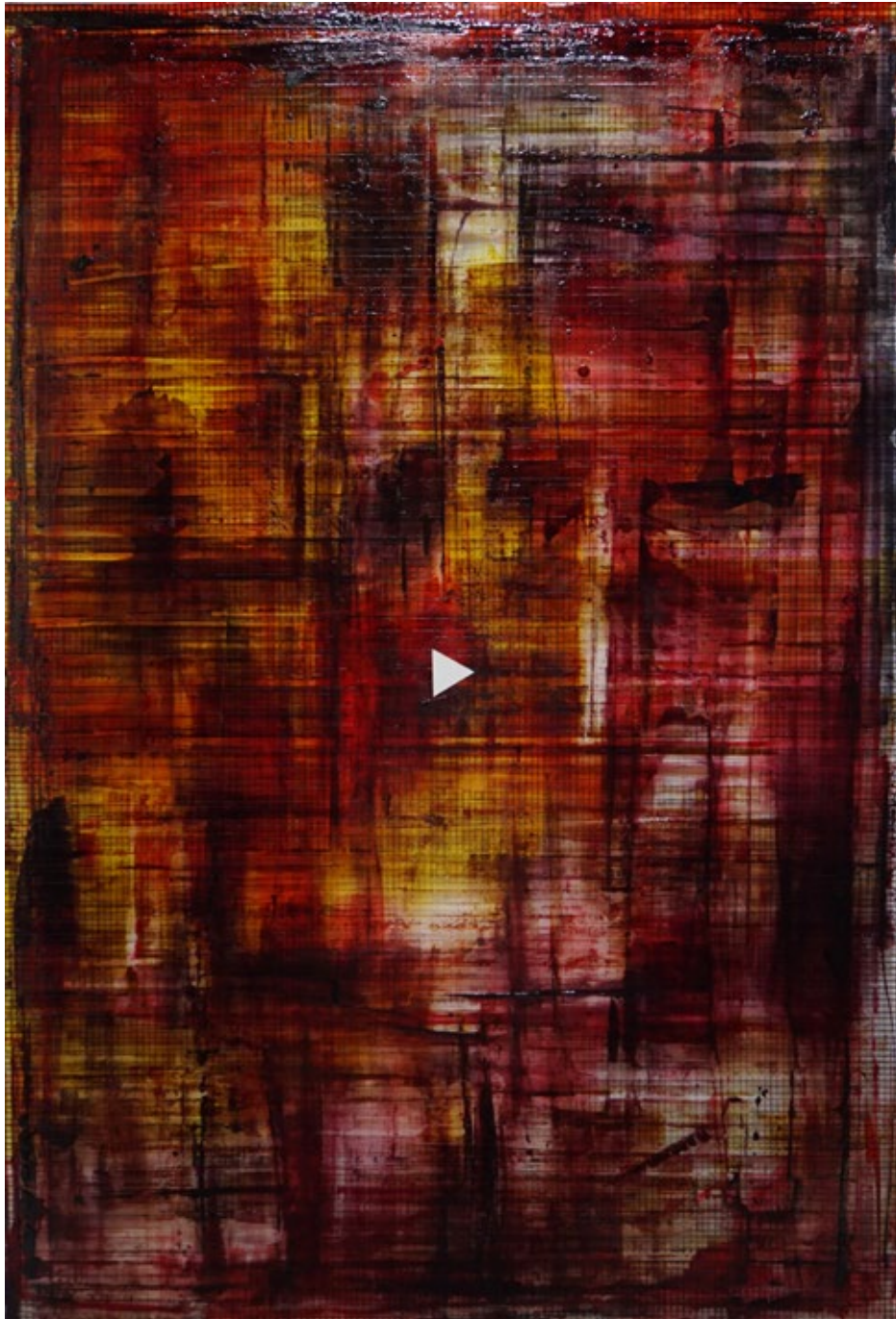
(fast forward icon | calendar 2) red, 2018

Painting | Mixed Media

ink, paint on plexiglass, wood, multi board, zinc plate, single-channel video in augmented reality

107 × 73 × 4.7cm

OT\_2888



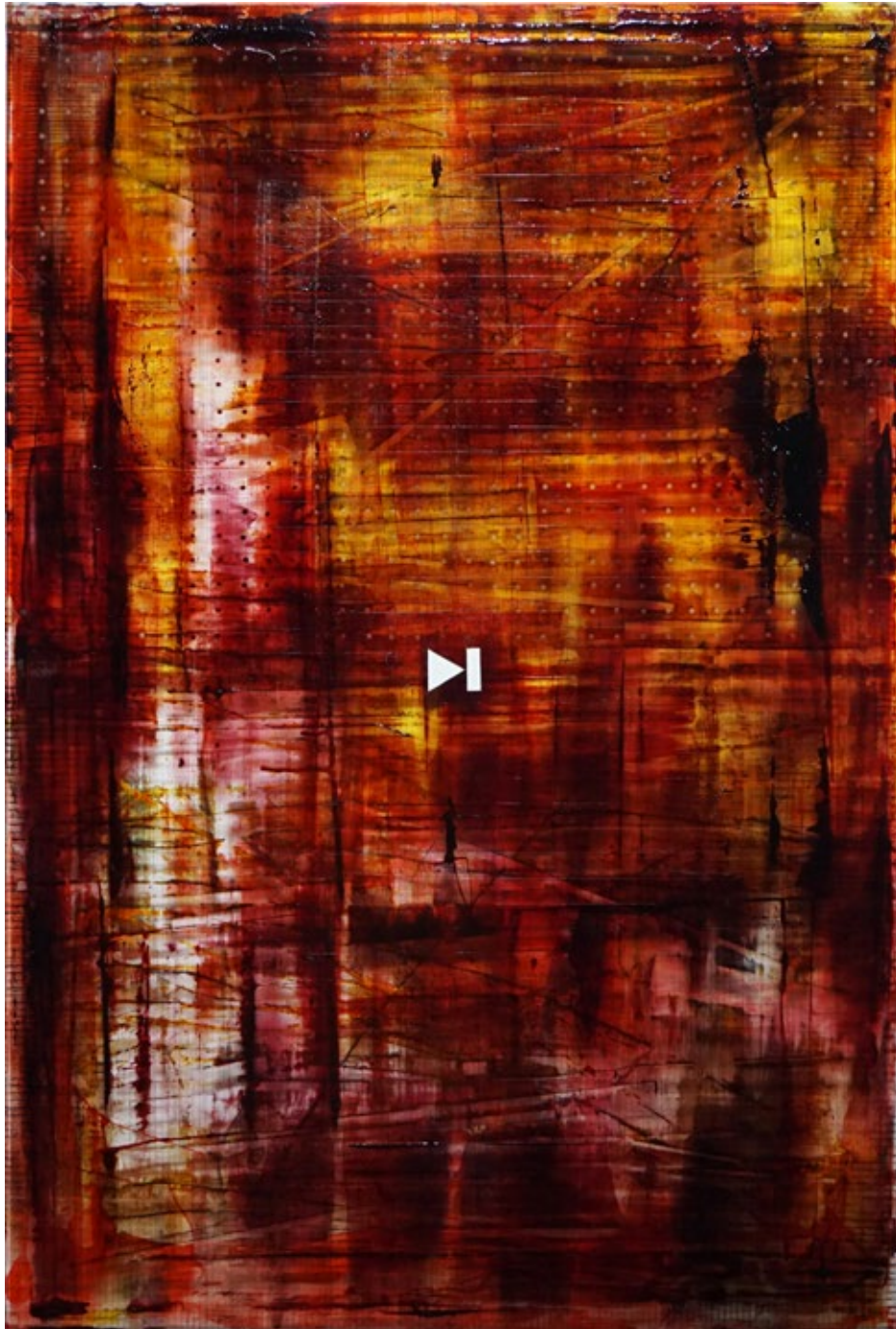
(play icon | calendar 1) red, 2018

Painting | Mixed Media

ink, paint on plexiglass, wood, multi board, zinc plate, single-channel video in augmented reality

107 × 73 × 4.7cm

OT\_2810



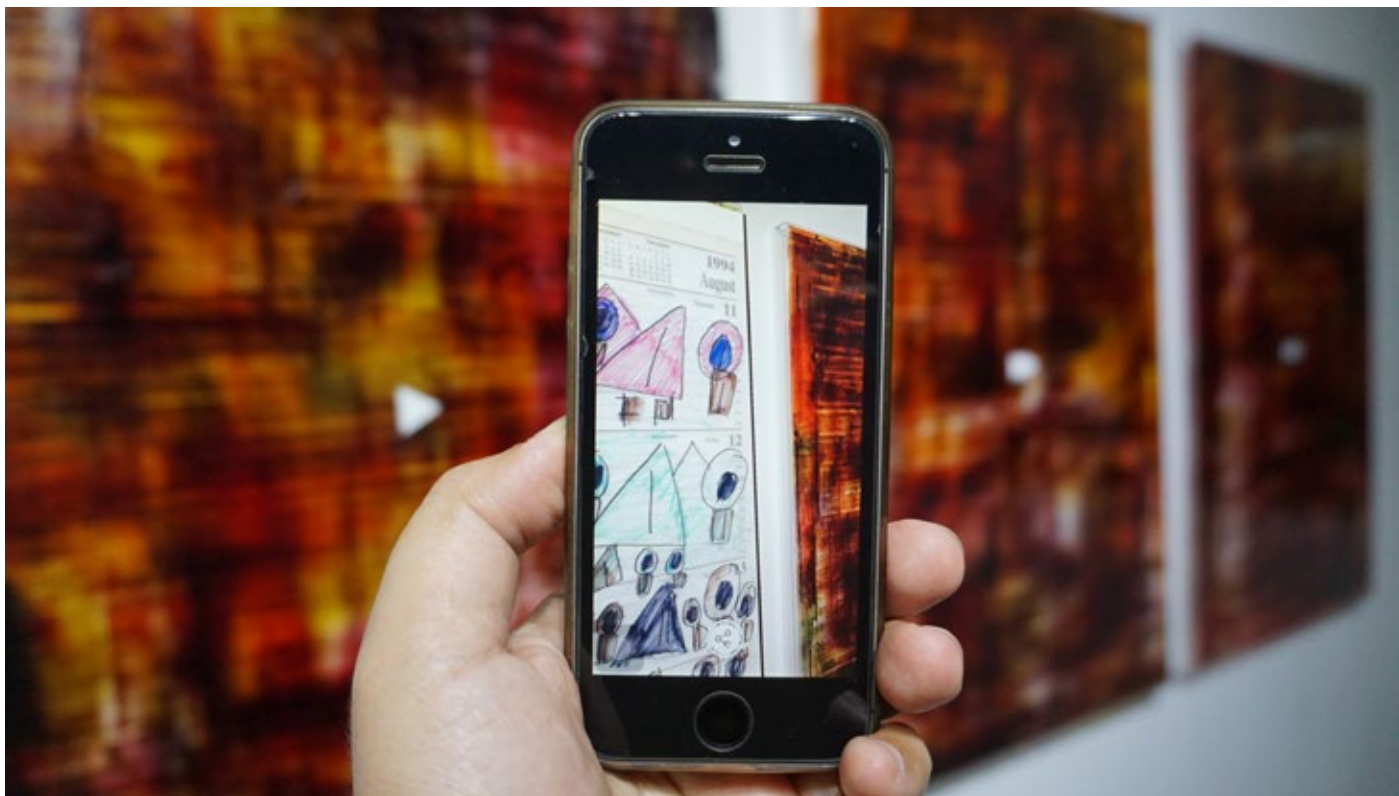
{forward icon | calendar 3} red, 2018

Painting | Mixed Media

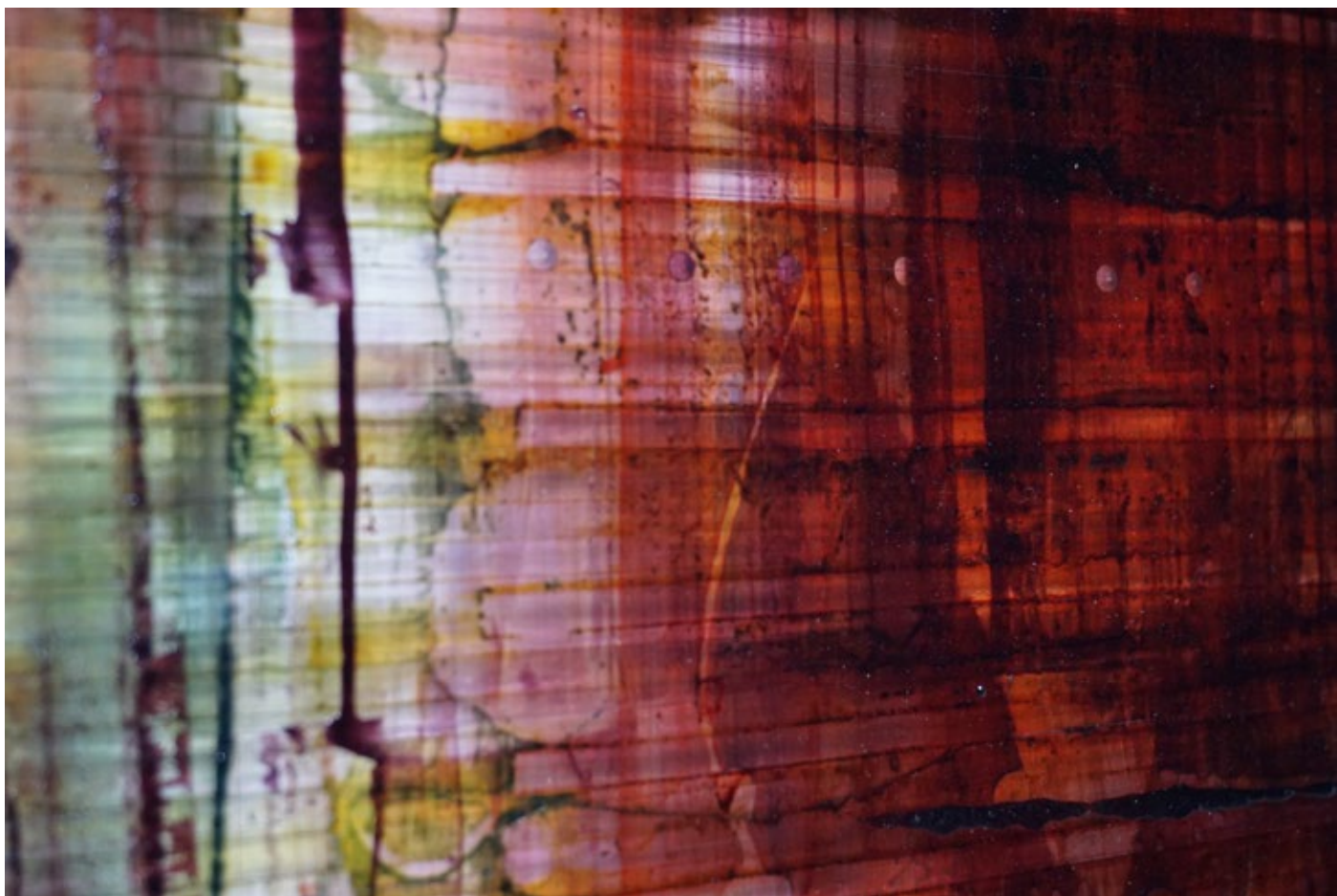
ink, paint on plexiglass, wood, multi board, zinc plate, single-channel video in augmented reality

107 × 73 × 4.7cm

OT\_2490



Augmented Reality view



Details



(focus icon | bank notebook) blue and white, 2018

Painting | Mixed Media

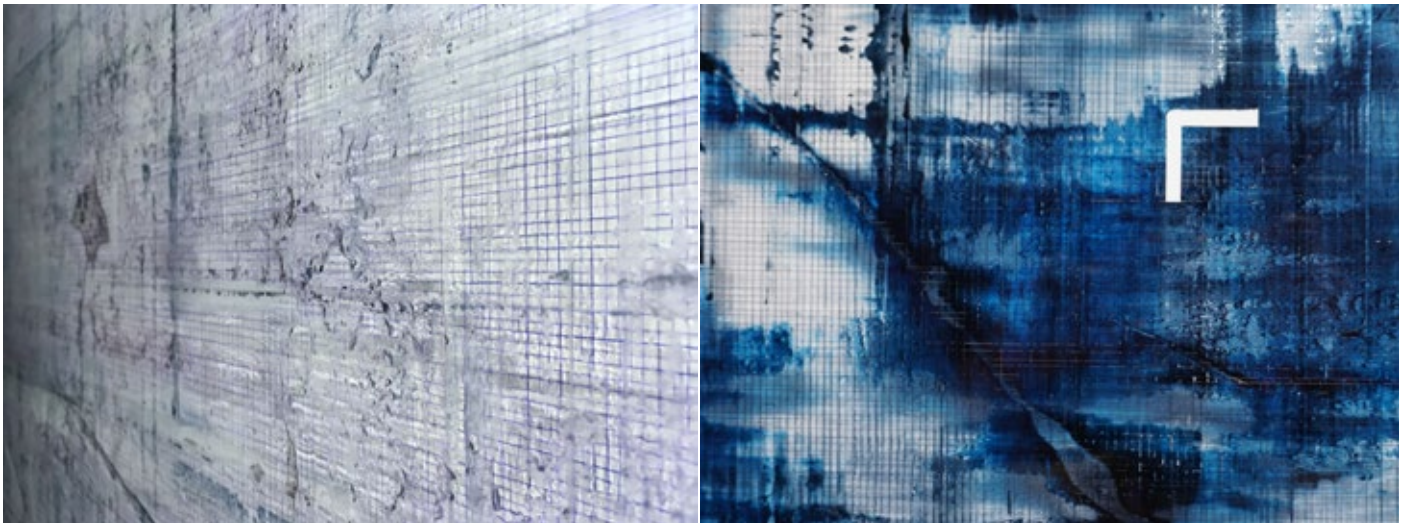
ink, paint on plexiglass, wood, multi board, zinc plate, single-channel video in augmented reality

73 × 109 × 5cm

OT\_3421



Augmented Reality view



Details



(focus icon | bank notebook) dark and light brown, 2018

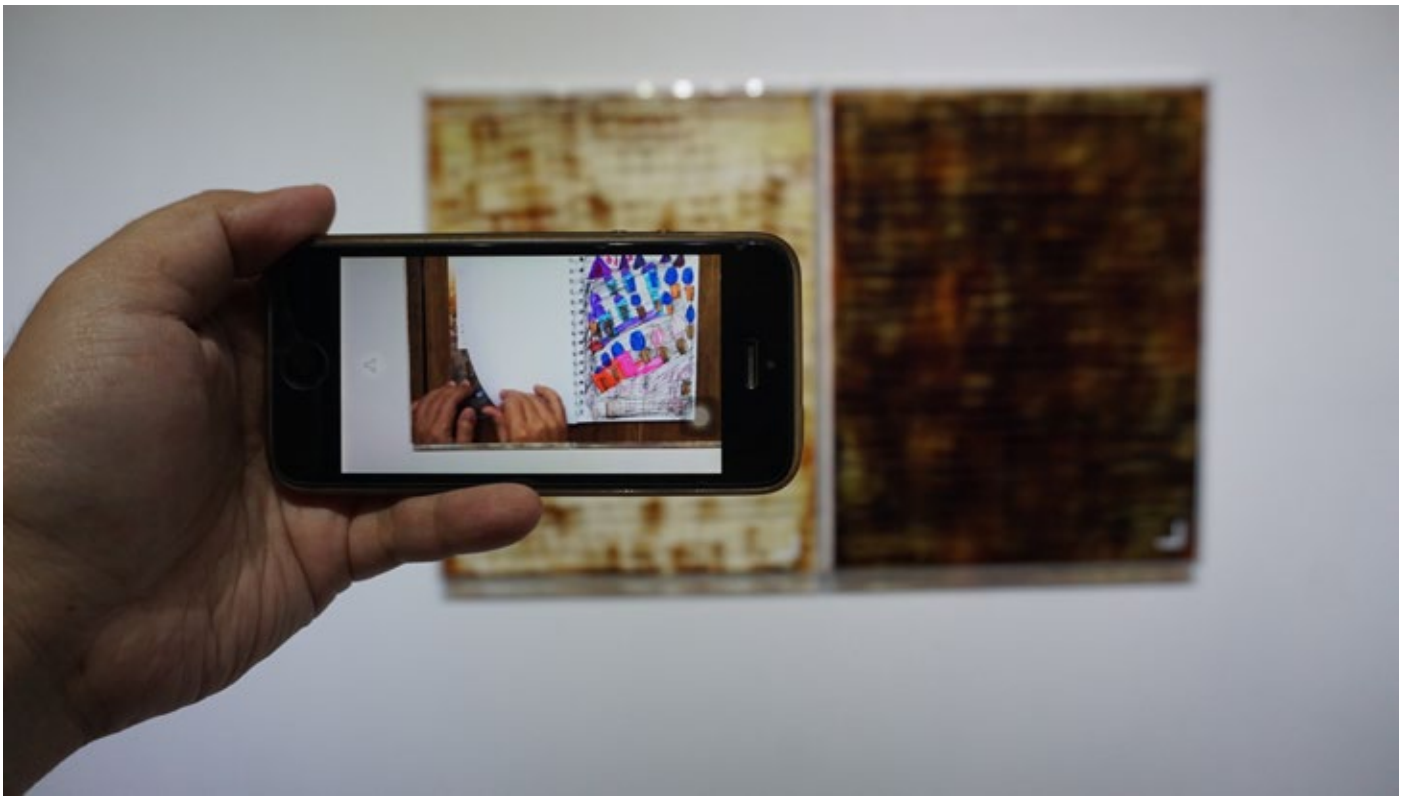
Painting | Mixed Media

ink, paint on plexiglass, wood, multi board, zinc plate, single-channel video in augmented reality

65.5 × 52.5 × 4.7cm, 2 pieces

OT\_0912

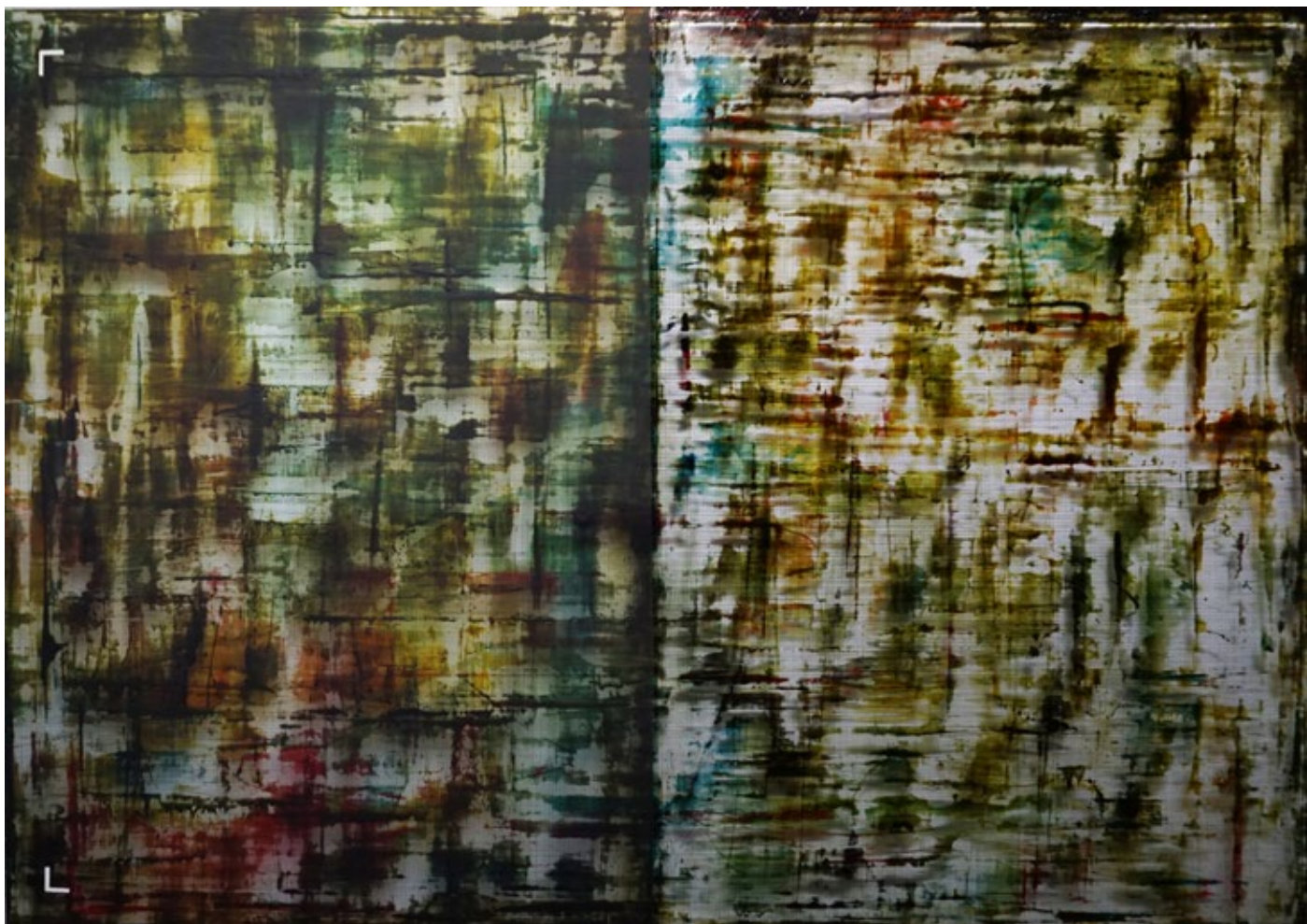




Augmented Reality view



Details



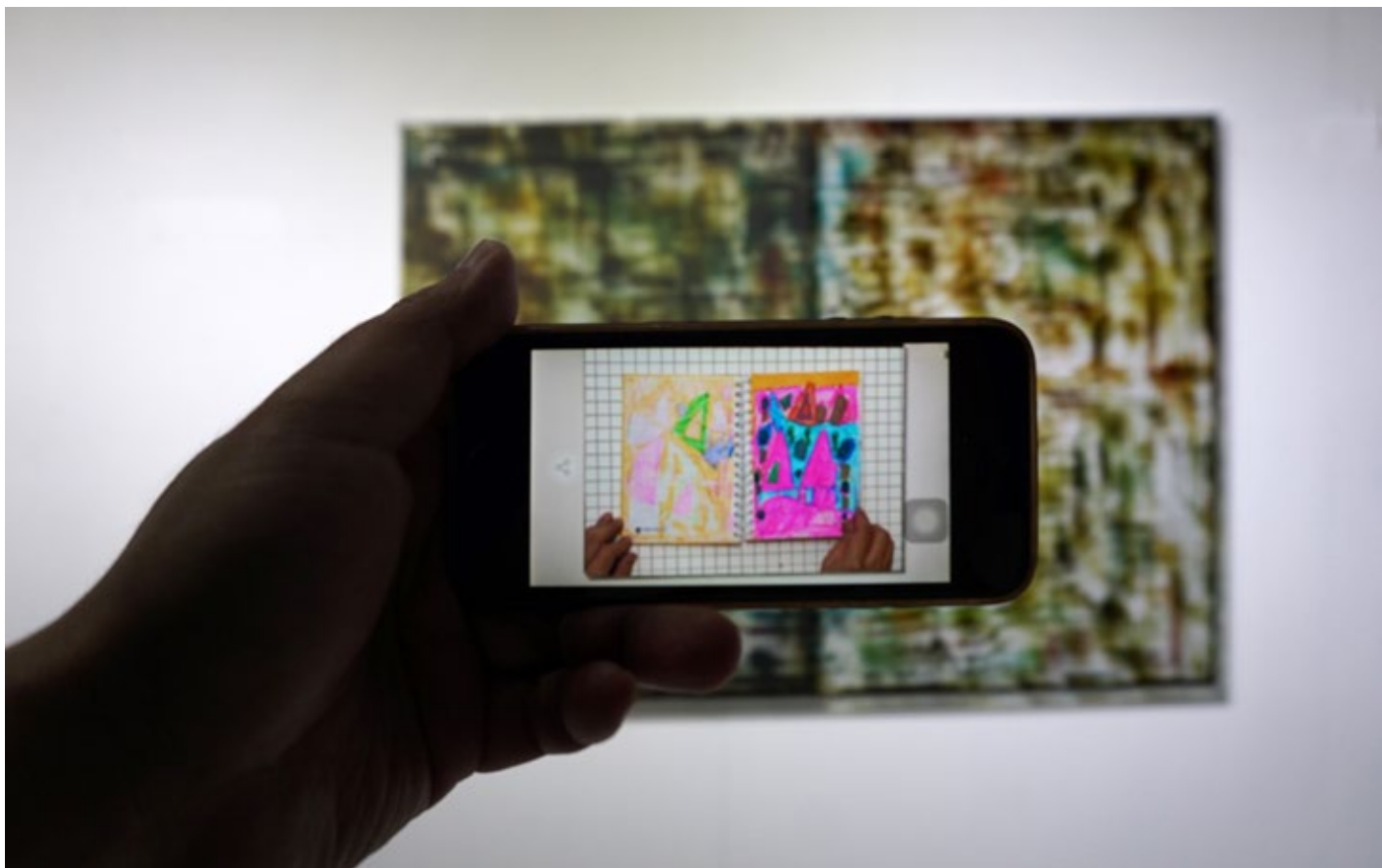
(focus icon | bank notebook) mix matt and clear, 2018

Painting | Mixed Media

ink, paint on plexiglass, wood, multi board, zinc plate, single-channel video in augmented reality

113.5 × 161.5 × 4.7cm

OT\_3740



Augmented Reality view



Details



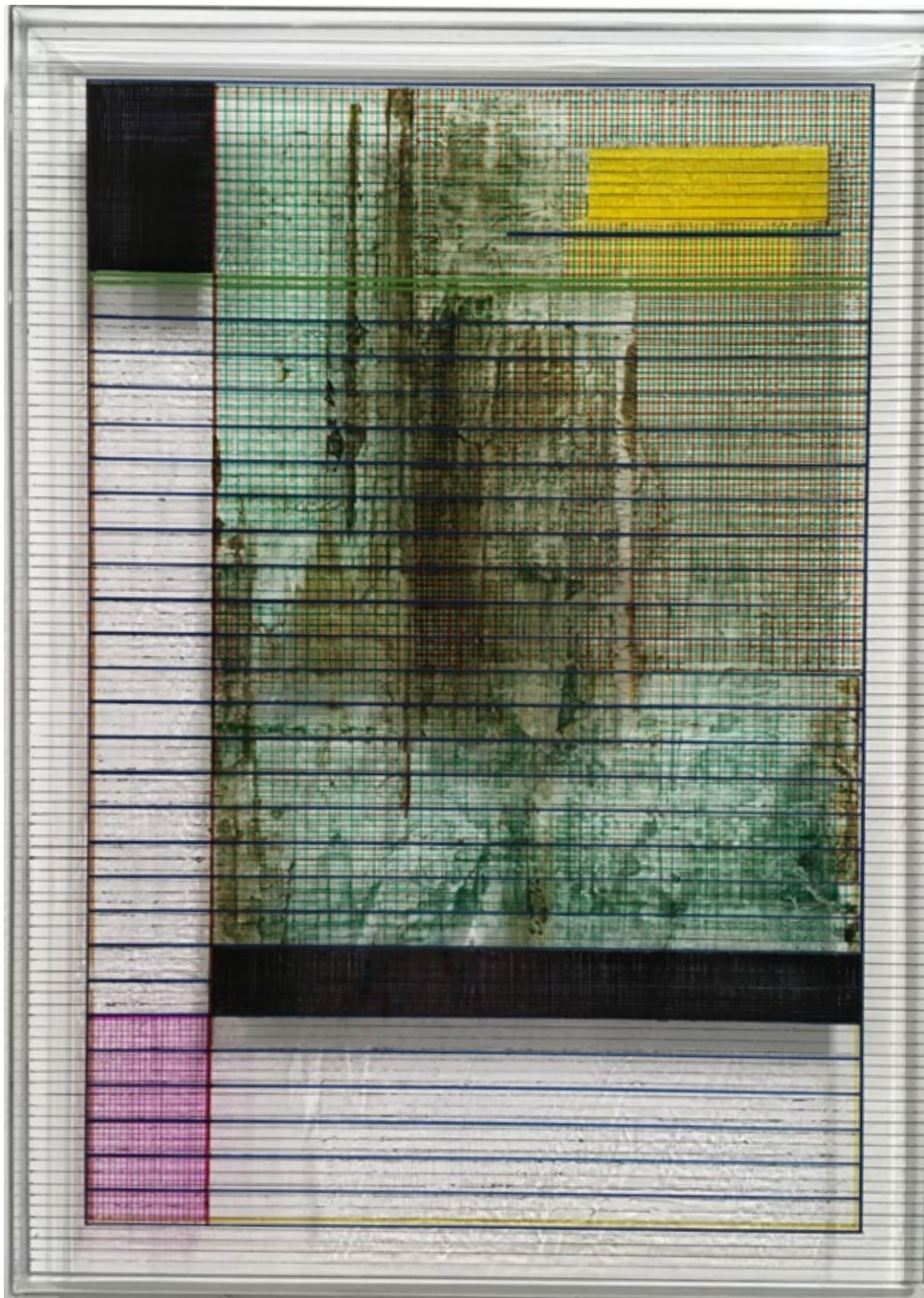
(writing line icon | name square) orange blue, 2018

Painting | Mixed Media

ink, paint on plexiglass, wood, multi board, zinc plate, single-channel video in augmented reality

56 × 40.5 × 3.5cm

OT\_0442

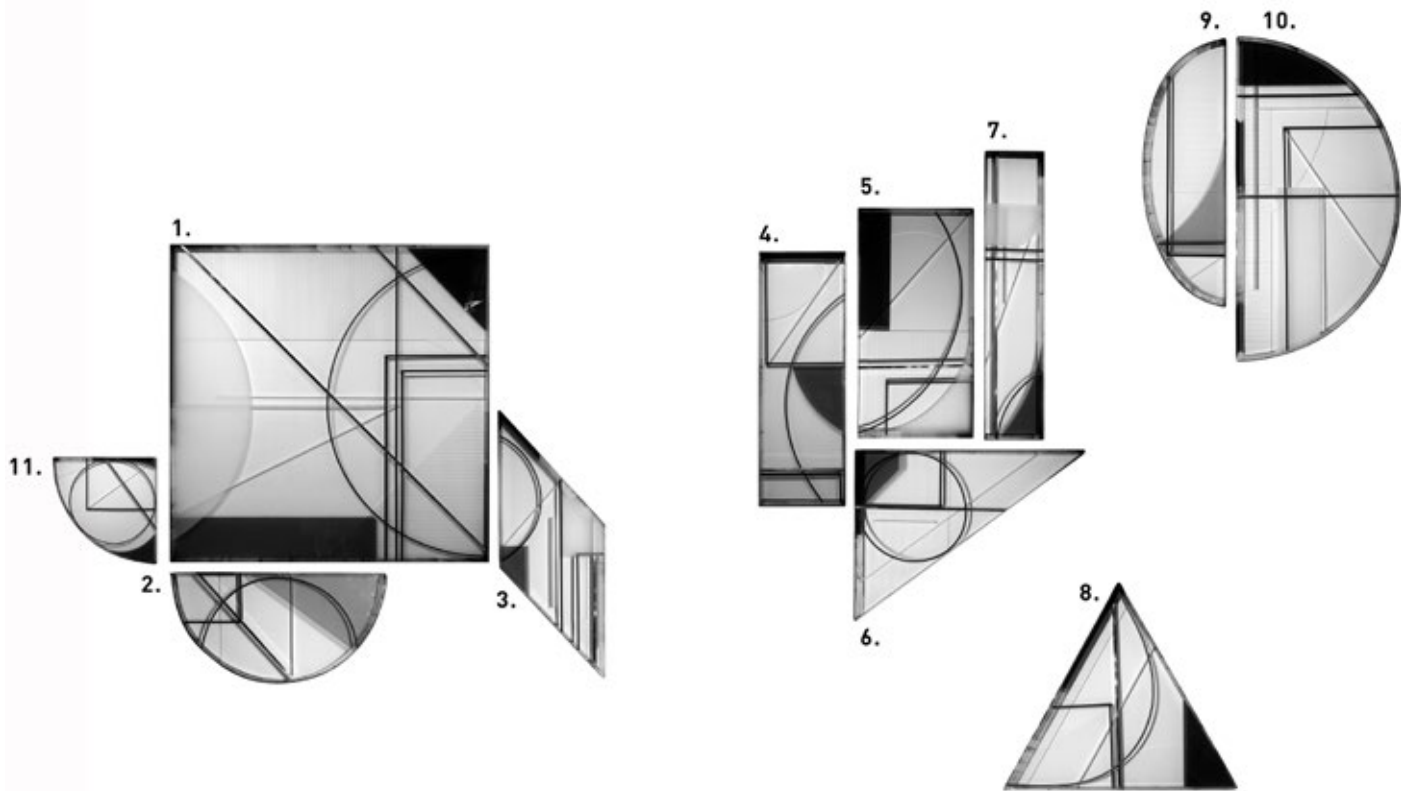


writing line icon | name line) green purple, 2018  
Painting | Mixed Media

ink, paint on plexiglass, wood, multi board, zinc plate, single-channel video in augmented reality

56 × 40.5 × 3.5cm

OT\_8656



(dis)connected geometry 1, 2018

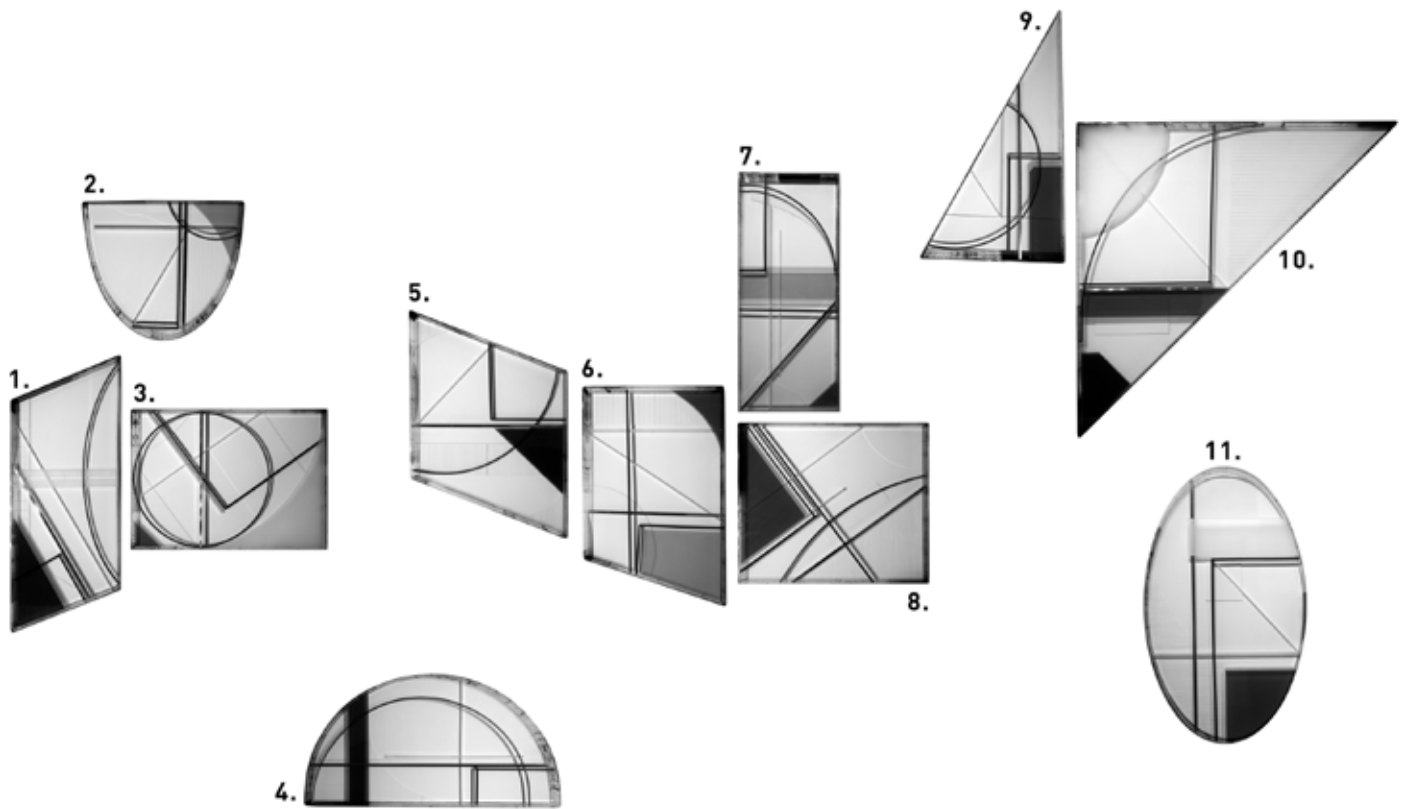
Painting | Installation | Mixed Media

plexiglass, paint, ink, wood, multi board, stainless steel, aluminium bar, multiple video projections

11 pieces

Dimensions: 1- 116 × 116.5 × 6.5cm; 2- 39.5 × 77 × 6.5cm; 3- 96.5 × 38.5 × 6.5cm;  
 4- 91 × 31 × 6.5cm; 5- 81 × 41 × 6.5cm; 6- 61 × 80.5 × 6.5cm; 7- 101 × 21 × 6.5cm;  
 8- 71 × 81 × 6.5cm; 9- 93.5 × 29.5 × 6.5cm; 10- 116 × 58 × 6.5cm; 11- 68 × 69 × 6.5cm

OT\_1692



(dis)connected geometry 2, 2018

Painting | Installation | Mixed Media

plexiglass, paint, ink, wood, multi board, stainless steel, aluminium bar, multiple video projections

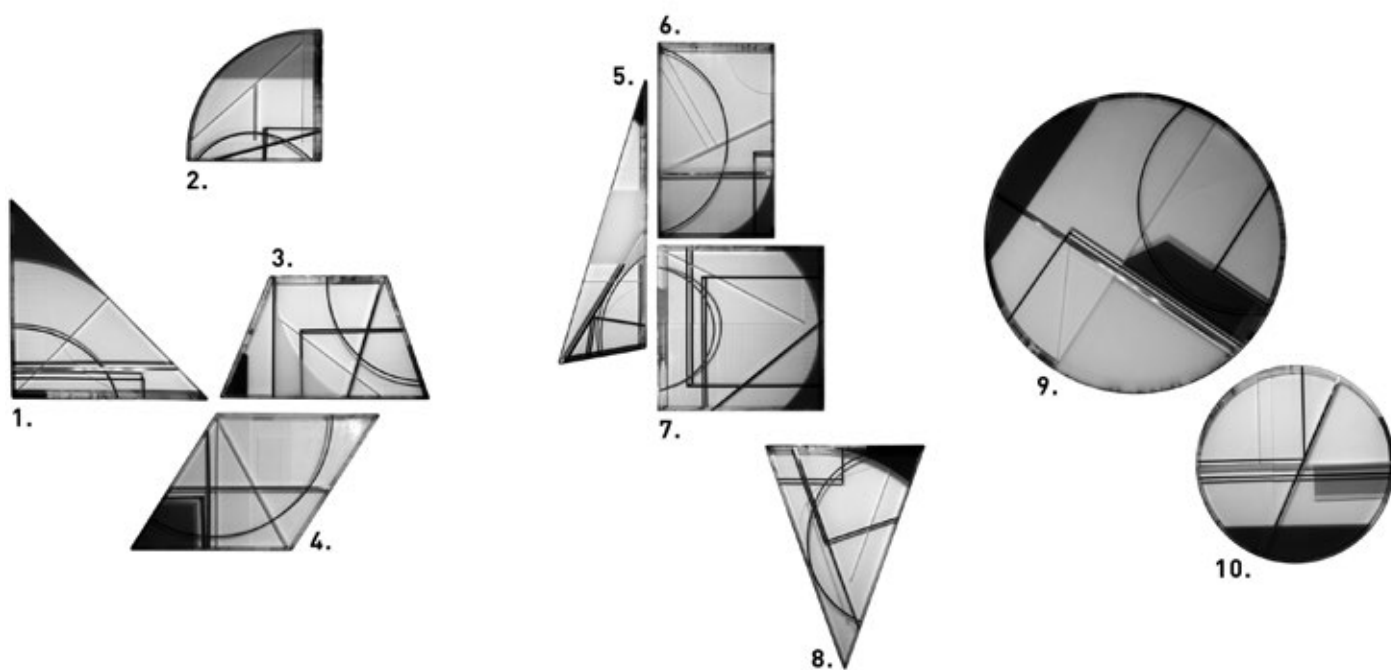
11 pieces

Dimensions: 1- 96 × 38 × 6.5cm; 2- 47.5 × 55 × 6.5cm; 3- 51 × 71 × 6.5cm; 4- 47.5 × 93 × 6.5cm;

5- 82.5 × 57 × 6.5cm; 6- 76 × 51 × 6.5cm; 7- 86 × 36 × 6.5cm; 8- 56 × 66 × 6.5cm;

9- 90.5 × 51 × 6.5cm; 10- 116 × 116 × 6.5cm; 11- 92 × 54.5 × 6.5cm

OT\_1819



(dis)connected geometry 3, 2018

Painting | Installation | Mixed Media

plexiglass, paint, ink, wood, multi board, stainless steel, aluminium bar, multiple video projections

10 pieces

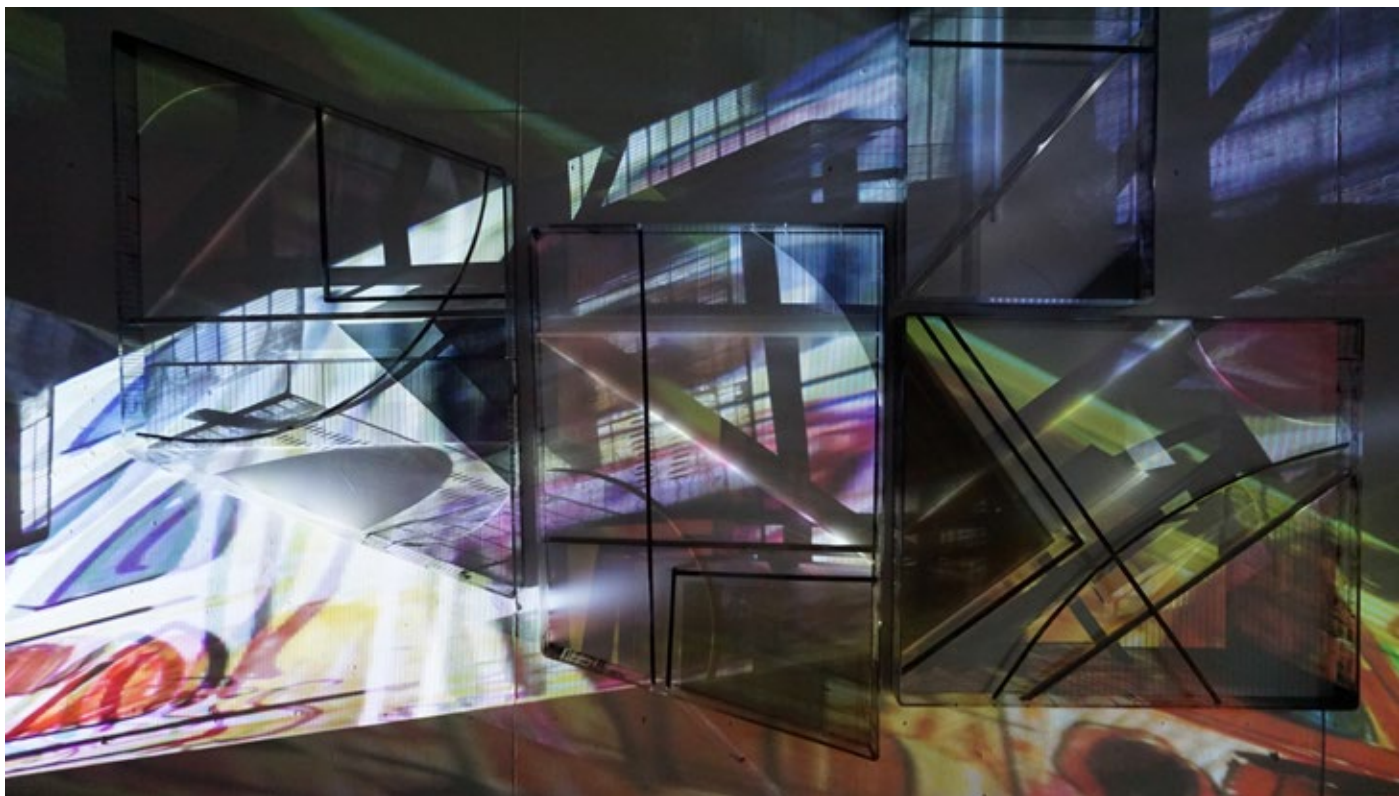
Dimensions: 1- 71 × 71 × 6.5cm; 2- 47 × 47 × 6.5cm; 3- 48 × 81 × 6.5cm; 4- 52 × 93 × 6.5cm;

5- 101 × 33 × 6.5cm; 6- 76 × 46 × 6.5cm; 7- 60 × 60 × 6.5cm; 8- 85.5 × 61 × 6.5cm;

9- Diameter:115cm; 10- Diameter:76cm

OT\_8723





Installation view with video projection

Courtesy to Gregorius Danang Prasetyanto for producing the videos for projection



Installation view with video projection

Courtesy to Gregorius Danang Prasetyanto for producing the videos for projection

# About Artist

Aditya Novali (b. 1978) is an artist based in Solo, Indonesia. He received his Bachelor of Engineering in Architecture from Universitas Katolik Parahyangan, Bandung, Indonesia (1997 - 2002) and IM Master of Conceptual Design from the Design Academy Eindhoven, The Netherlands (2006 – 2008).

Novali works with a variety of materials, often first conceiving an idea and then finding the right medium to transcribe his vision. His background in architecture plays an influential role in his work. His sensitivity to structure, space, and knowledge of construction shapes his approach and aesthetic. Addressing themes such as boundaries, identities, materialism, and urban life, Novali's work interacts with the viewer and transforms with each viewing.

Aditya Novali has exhibited in galleries and institutions all over the world, including in Indonesia, Singapore, Taiwan, UK, Italy, Switzerland, Japan, and Lebanon. Recent exhibitions include "Diaspora: Exit, Exile, Exodus of Southeast Asia", MALLAM Contemporary Art Museum, Thailand (2018); "SUNSHOWER: Contemporary Art from Southeast Asia 1980s to Now", Mori Art Museum and The National Art Center, Japan (2017); "Biennale Jogja XIV- Equator #4", Jogja National Museum, Indonesia (2017); "Multiple Spectacle: Art from Asia", Ningbo Museum of Art, China (2017); "Acrylic", ROH Projects, Indonesia (2016); "Imaginary Synonym", Tokyo Wonder Site, Japan (2016); "Aku Diponegoro", National Gallery of Indonesia, Indonesia (2015); "Shout! Indonesian Contemporary Art", Museo d'Arte Contemporanea (MACRO), Italy (2014); "South East Asia (SEA) + Triennale", National Gallery of Indonesia, Indonesia (2013); "Little Water", Dojima River Biennale, Japan (2013); "Beyond the Walls", Primo Marella Gallery, Italy (2013); "Pressing", Videinsight® Foundation, Italy (2013); "Of Human Scale and Beyond: Experience and Transcendence", Hong Kong Arts Centre, Hong Kong (2012).

A finalist in the 2010 Sovereign Asian Art Prize, Novali was also awarded Best Artwork in the Bandung Contemporary Art Awards (BaCAA) in the same year. He was most recently awarded the Best Young Artist award in the inaugural Indonesian Art Award for Authenticity, Leadership, Excellence, Quality, Seriousness in Art organised by Art Stage Jakarta in 2017 and will be participating in Asia Pacific Triennale 9 in Brisbane, Australia in November 2018.

# Artist CV

Aditya Novali

b. 1978, works and lives in Solo, Indonesia

## Education

1997 -2002 Bachelor of Engineering in Architecture, Universitas Katolik Parahyangan, Bandung, Indonesia  
2006 -2008 IM Master of Conceptual Design, Design Academy Eindhoven, The Netherlands

## Awards

2017 Best Young Artist (Indonesian Art Award for ALEQS), Art Stage Jakarta  
2016 Best Emerging Artist using Installation finalist, Prudential Eye Awards  
2011 Best Artwork BaCAA (Bandung Contemporary Art Award 2010)  
2010 3rd winner Jakarta Art Award 2010  
Finalist Sovereign Asian Art Prize

## Solo Exhibitions

2017 Caprice, Discoveries section-Art Basel Hong Kong, Hong Kong  
2016 Acrylic, Roh Projects, Jakarta  
2014 Painting Sense, Roh Projects, Jakarta  
2013 Beyond The Walls, Primo Marella Gallery, Milan, Italy  
2012 Method of Polarity, Umahseni, Jakarta  
The Wall: Asian (Un)Real Estate Project, Project Stage-Art Stage, Singapore  
2011 Indoscape: A "Geo-History", Canna Gallery, Jakarta

## Selected Group Exhibitions

2018 ArtJog 2018: Enlightenment, Jogja National Museum, Yogyakarta, Indonesia  
Diaspora: Exit, Exile, Exodus of Southeast Asia, MAIIAM Contemporary Art Museum, Chiangmai, Thailand  
2017 SUNSHOWER: Contemporary Art from Southeast Asia 1980s to Now, Mori Art Museum and The National Art Center, Tokyo, Japan  
Age of Hope, Biennale Jogja XIV- Equator #4, Jogja National Museum, Yogyakarta  
Lines, Borders, Boundaries, and The In-Betweens, Yamamoto Gendai, Tokyo, Japan  
Saya Datang: Collection and Archive Dr Melani W Setiawan, Taman Budaya Yogyakarta, Yogyakarta  
2016 Imaginary Synonym, Tokyo Wonder Site, Tokyo, Japan  
Prudential Eye Awards 2016, Art Science Museum, Singapore  
South East Asia Forum, Marina Bay Sands, Singapore  
2015 Aku Diponegoro, National Gallery, Jakarta  
(Dis)appear, Primae Noctis Art Gallery, Lugano, Switzerland  
2014 The Order - Makan Angin#2. residency exhibition, Cemeti Art House, Yogyakarta  
Shout! Indonesian Contemporary Art, Museo d'Arte Contemporanea (MACRO), Rome, Italy  
Versi. Sculpture Triennale, National Gallery, Jakarta  
Art 14 London, London, England  
Primo Marella Gallery, Scope Basel, Basel, Switzerland  
2013 Little Water, Dojima River Biennale, Osaka, Japan  
South East Asia (SEA)+ Triennale, National Gallery, Jakarta  
2012 Deep S.E.A: Contemporary Art from South East Asia, Primo Marella Gallery, Milan, Italy  
Re.claim, National Gallery, Jakarta  
2011 Maximum City, Jakarta Biennale, National Gallery, Jakarta  
Religiosity In Indonesian Art, Art:1New Museum, Jakarta  
Ekspansi, National Gallery, Jakarta  
Sovereign Asian Art Prize 2010 Finalist Exhibition, Hongkong

## Residency

2016 International Creator Program, Tokyo Wonder Site, Tokyo, Japan  
2014 Makan Angin #2, Cemeti Art House, Yogyakarta, Indonesia

## 关于艺术家

诺瓦利1978年出生于印度尼西亚的梭罗市。他于2002年从万隆天主教大学获得建筑系工程学士学位，并于2008年从荷兰埃因霍温设计学院获得设计概念国际硕士学位。

他目前居住于印度尼西亚。诺瓦立的作品运用许多不同的素材，他习惯先寻找构思，再找寻合适的媒介去表达他的想法。诺瓦立的作品深受他的建筑背景的影响。他的作品不只体现出他对建筑的丰富知识以及对结构于空间的高敏感度，更体现因学习建筑而特有的创作手段和审美观。诺瓦立的作品常以边界、身份认同、唯物主义和城市生活为主题，作品与观者保持着较高互动性，而对其作品的注释也因人而异。

诺瓦立的作品在全球各地都有展出，包括印度尼西亚、新加坡、台湾、英国、意大利、瑞士、日本和黎巴嫩。他的展览包括《流散：南洋的离去、放逐、逃亡》，MAIIAM当代美术馆，泰国（2018年）；《太阳雨：1980年代至今的东南亚当代艺术》，国立新美术馆，森美术馆，日本（2017）；《虚同义字》，东京奇迹网站，日本（2016年）；《AKU蒂博尼哥罗》，印度尼西亚，印度尼西亚国家美术馆（2015年）；《呐喊：印度尼西亚当代艺术》，罗马当代艺术博物馆（MACRO），意大利（2014年）；《华尔街/结构/建筑/边框/内存》，方舟画廊，印尼（2014年）；《东南亚（SEA）+三年展》，印度尼西亚，印度尼西亚国家美术馆（2013年）；《墙外》，Primo Marella画廊，意大利（2013年）；《冲压》，Videoinsight艺术科学基金会，意大利（2013年）；以及《人类的规模和超越：经验与超越》，香港艺术中心，香港（2012年）。

2010年，诺瓦立在万隆当代艺术奖（BaCAA）获得最佳艺术品的荣誉。诺瓦立也在同一年入围帝力基金杰出亚洲艺术奖。近期，他在艺术登陆雅加达2017举办的首届印尼艺术奖荣获了最佳年轻艺术家奖。他将在2018年底参与第九届布里斯班亚太当代艺术三年展。

# 艺术家简历

阿迪亚·诺瓦立

b. 1978, 工作和生活于梭罗

## 教育

1997 – 2002 万隆天主教大学 (UNPAR), 工程学学士 (建筑), 印尼 万隆  
2006 – 2008 设计概念国际硕士, 埃因霍温设计学院, 荷兰

## 获奖

2017 最佳年青艺术家奖 (印尼艺术奖), 艺术登陆雅加达  
2016 入围者, 新兴装置艺术家, 保诚当代艺术奖, 新加坡  
2011 最佳艺术品, 万隆当代艺术奖 (BaCAA), 印尼  
2010 第三名, 雅加达艺术奖, 印尼  
入围者, 帝力基金杰出亚洲艺术奖, 新加坡

## 个展

2017 《Caprice》, 「艺术探新」展区, 巴塞尔艺术展 香港展会, 香港  
2016 Acrylic, ROH Projects, 印尼 雅加达  
2014 《绘画意识》, ROH Projects, 印尼 雅加达  
2013 《墙外》, Primo Marella 画廊, 意大利 米兰  
2012 《极性的方法》, Umahseni, 印尼 雅加达  
《The Wall: Asian (Un)Real Estate Project》, Project Stage - 艺术登陆新加坡艺博会, 新加坡  
2011 《印尼: 地缘历史》, Canna画廊, 印尼 雅加达

## 群展

2018 《启蒙》, ArtJog艺博会2018, 日惹国家博物馆, 印尼 日惹  
《流散: 南洋的離去、放逐、逃亡》, MAIIAM当代美术馆, 泰国 清迈  
2017 《太阳雨: 1980年代至今的东南亚当代艺术》, 国立新美术馆, 森美术馆, 日本 东京  
《赤道#4 - 希望的时代》, 第十四届日惹双年展, 日惹国家博物馆, 印度尼西亚 日惹  
《Lines, Borders, Boundaries, and The In-Betweens》, 山本现代, 日本 东京  
《Saya Datang: Collection and Archive Dr Melani W Setiawan》, Taman Budaya Yogyakarta, 印尼 日惹  
2016 《虚同义字》, 东京奇迹网站涩谷, 日本 东京  
“2016 保诚当代艺术奖展览”, 新加坡艺术科学博物馆, 新加坡  
《东南亚艺术论坛》, 艺术登陆新加坡艺博会, 新加坡  
2015 《AKU 蒂博尼哥羅》, 印度尼西亚国家美术馆, 印尼 雅加达  
《(不)见》, Prima Noctis画廊, 瑞士 卢加诺  
2014 《次序》, Makan Angin#2驻留展, Cemeti Art House, 印尼 日惹  
《呐喊: 印度尼西亚当代艺术》, 罗马当代艺术博物馆, 意大利 罗马  
《版本》, 印尼雕塑三年展, 印度尼西亚国家美术馆, 印尼 雅加达  
“Art 14 伦敦当代艺术博览会”, 英国 伦敦  
Primo Marella 画廊, SCOPE巴塞尔艺术博览会, 瑞士 巴塞尔  
2013 《小水》, 堂岛川双年展, 日本 大阪  
“SEA+三年展”, 印度尼西亚国家美术馆, 印尼 雅加达  
《Deep S.E.A: Contemporary Art from South East Asia》, Primo Marella 画廊, 意大利 米兰  
《Re.claim》, 印度尼西亚国家美术馆, 印尼 雅加达  
2011 《Maximum City: Survive or Escape?》, 第14届雅加达双年展, 印尼 雅加达  
《印尼艺术的宗教情感》, Mon Décor艺术中心, 印尼 雅加达  
《扩张》, 印度尼西亚国家美术馆, 印尼 雅加达  
《2010帝力基金杰出亚洲艺术奖 - 入围者》, 交易廣場, 中国 香港

## 驻留

2016 东京奇迹网站, 日本 东京  
2014 Cemeti Art House, 印度尼西亚 日惹

# ShanghART

## 香格纳画廊

### **ShanghART Shanghai 香格纳西岸**

West Bund, Bldg.10, No.2555 Longteng Avenue, Xuhui District, Shanghai, China 200232

徐汇区西岸龙腾大道2555号10号楼, 上海, 中国 200232

T: +86 21-6359 3923, +86 21-5424 9033 | info@shanghartgallery.com

### **ShanghART M50 香格纳M50**

Bldg 16, 50 Moganshan Rd., Putuo District, Shanghai, China 200060

普陀区莫干山路50号16号楼, 上海, 中国 200060

T: +86 21-6359 3923 | info@shanghartgallery.com

### **ShanghART Beijing 香格纳北京**

261 Cao Chang Di, Old Airport Rd, Chaoyang District, Beijing, China 100015

朝阳区机场辅路草场地261号, 北京, 中国 100015

T: +86-10 6432 3202 | infobj@shanghartgallery.com

### **ShanghART Singapore 香格纳新加坡**

9 Lock Road, #02-22, Gillman Barracks, Singapore 108937

吉门营房, LOCK路9号02-22, 新加坡108937

T: +65 6734 9537 | info@shanghartsingapore.com