

ShanghART  
香 格 纳 画 廊

Art|Basel

#1C09

香港會議展覽中心,  
香港灣仔港灣道1號

Hong Kong Convention &  
Exhibition Centre, 1 Harbour Road

3.26 - 30 2025

Vernissage 3.27 4 - 8PM

Preview 3.27 12 - 4PM, 3.28-29 12 - 2PM  
3.30 11AM - 12PM

Public 3.28-29 2 - 8PM, 3.30 12 - 6PM

光映现场 Film Sector:  
曹澍 CAO Shu:  
妖糖 Phantom Sugar

陳維 CHEN Wei 曹澍 CAO Shu 陳問村 CHEN Wencun 丁乙 DING Yi 高磊 GAO Lei  
韓夢雲 HAN Mengyun 胡項城 HU Xiangcheng 蔣小餘 JIANG Xiaoyu 李山 LI Shan  
魯鈺 LU Yu 呂岩 LV Yan 劉唯艱 LIU Weijian 劉毅 LIU Yi 牟雪 MU Xue  
孫遜 SUN Xun 汪琦琦 WANG Qiqi 王一一 WANG Yiyi 鄔一名 WU Yiming  
徐赫 XU He 徐震 Xu Zhen 薛松 Xue Song 蕭文傑 XIAO Wenjie 張鼎 ZHANG Ding  
趙仁輝 Robert ZHAO Renhui 趙洋 ZHAO Yang

## 胡项城

“我们来这世间总是不断破解已知范围，而更大未知又吸引了我们 ... ..” ——胡项城

胡项城，1950 年生，早期便活跃于中国当代艺术圈，始终致力于艺术形式的探索与实验。2024 年 4 月，上海当代艺术博物馆 (PSA) 举办了个人展览“天天问”。他将美术馆视作“生成探索”的实验空间，从手摇装置《天天问》到《尺度》等二十余件大型装置作品，通过现场互动与视觉冲击，邀请观众进入他的哲学思考世界。正如策展人南条史生所说：“这样的艺术家是欧美和日本所没有的。从某种程度上来说，他更像是一个拥有许多玩具并不断与这些玩具互动的大男孩。他不仅仅是画家，更是雕塑家、装置艺术家，甚至是哲学家。”

他早年曾在大学担任教师，后来转型为全职艺术家，始终专注于创作，没有代理画廊，很少媒体宣传，鲜有人知他引领了许多才华横溢的艺术家（如蔡国强、陈箴）探索新的创作方法。PSA 的展览将胡项城重新推向聚光灯下，人们开始重新关注这位伟大但长期被忽视的艺术家，同时也让香格纳重新发现了珍贵的艺术价值。

胡项城擅长用厚重浓烈的综合媒介在画布上重构和解构，从他的作品中可以直观的看到时光的沉淀带来的痕迹，其中饱含他对生命和命运共同体的思考。巴塞尔现场的大尺幅作品《证明》以汉字“又”为核心，画面中的裂纹灵感源自古代陶瓷的冰裂纹，中央由铅笔与木炭交错的线条构成，隐约可见人形在其中无休止地穿梭往复。黑色线条来自木炭灰尘，暗示着与中国传统文化中焚香供奉的关系。整幅作品仿佛在向观者诉说着循环与万物之间自有其深邃的联系。

香格纳画廊荣幸地宣布代理艺术家胡项城。他的艺术实践为中国当代艺术史增添了浓墨重彩的一笔，尤其是在全球化背景下，他对地域性与文化身份的深入探索，凭借无尽的好奇心及对不同材料与技术的浓厚兴趣，开启了个人的艺术创作之路。

## HU Xiangcheng

"We come into this world constantly deciphering the known, while the vast unknown continues to allure us..." — Hu Xiangcheng

Born in 1950, Hu Xiangcheng has been an active figure in the Chinese contemporary art scene from an early stage, consistently dedicated to the exploration and experimentation of artistic forms. In April 2024, the Power Station of Art (PSA) in Shanghai hosted his solo exhibition "Asking Every Day." He views the art museum as a laboratory for "generative exploration," presenting over twenty large-scale installations from the hand-cranked device "Asking Every Day" to "Scale," inviting audiences into his philosophical world through interactive experiences and visual impacts. As curator Nanjo Fumio remarked, "Such an artist is unseen in Europe, America, or Japan. To some extent, he resembles a big boy with many toys, constantly interacting with them. He is not just a painter but also a sculptor, installation artist, and even a philosopher."

Earlier in his career, Hu taught at a university. After becoming a full-time artist, he immersed himself in his creations without gallery representation or much media publicity, quietly leading many talented artists (such as Cai Guo-Qiang and Chen Zhen) to explore new creative methods. The PSA exhibition brought Hu Xiangcheng back into the spotlight, prompting a renewed interest in this great yet long-overlooked artist, and allowing ShanghART to rediscover his invaluable artistic contributions.

Hu Xiangcheng excels in reconstructing and deconstructing on canvas with intense mixed media. His works vividly display the traces of time, embodying his reflections on life and the community of fate. His large-scale piece "Proof" at the Basel show centers around the Chinese character "又" (again), with cracks inspired by ancient ceramic ice cracks. The central area, interwoven with pencil and charcoal lines, subtly reveals human figures endlessly moving back and forth. The black lines, derived from charcoal dust, hint at a connection with the traditional Chinese practice of incense offering. The entire artwork seems to narrate to the viewer the profound connections between cycles and all things.

ShanghART Gallery is honored to announce its representation of artist Hu Xiangcheng. His artistic practice adds a significant chapter to the history of Chinese contemporary art, especially in the context of globalization. His deep exploration of regionality and cultural identity, driven by endless curiosity and a keen interest in various materials and techniques, has paved a unique path in his artistic creation.

# 胡项城 HU Xiangcheng



证明

*Proof*

2018~2025

布上综合材料

mixed media on canvas

244(H)\*366cm

HXC\_1082



# 胡项城 HU Xiangcheng



疑似 - 874P

*The Obscure - 874P*

2021

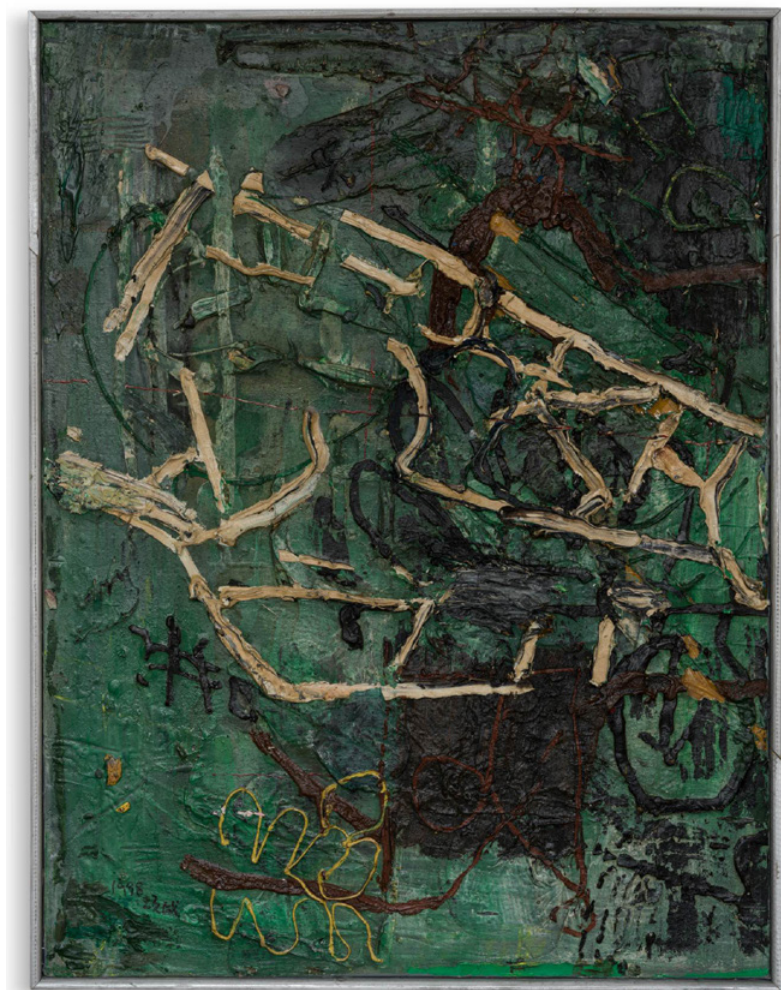
布上综合材料

mixed media on canvas

102(H)\*83\*5.5cm

HXC\_2936

# 胡项城 HU Xiangcheng



疑似 - 124A

*The Obscure - 124A*

1998~2012

布上综合材料 | 丙烯  
mixed media on canvas

95(H)\*72.5cm

HXC\_0399

# 胡项城 HU Xiangcheng



**依然 - 1234F**

***As Before 1234F***

1998~2012

布上综合材料 | 丙烯  
mixed media on canvas

61(H)\*55cm

HXC\_3503



## 水墨单元

水墨画作为中国传统艺术的重要形式，水墨材质有着悠久的历史，具有独特的艺术特点。到现在许多艺术家在创作中将水墨与其他艺术形式相结合，如装置艺术、影像和表演艺术等，进一步拓展了水墨的表现空间。

水墨艺术随着时代的变迁不断创新与发展，香格纳的艺术家们也在探索这一媒介的当代转化。在当代艺术的语境中，如何运用水墨独特材质的表现力，为作品添加趣味与生命力。例如，90 后艺术家刘毅巧妙融合水墨与动画，创作出一系列水墨动画及装置艺术作品；80 后艺术家孙逊的全新作品在法国蓬皮杜中心展出，其灵感源自最新动画电影，以宋画的装裱与设色方式呈现，构建出别具一格的动画世界；而 60 后艺术家邬一名则以水墨创作充满现代感的水晶灯及当代景物画作，细腻生动，光影交错，展现水墨的无限可能。

我们期待通过这一特别单元，让观众深入感受水墨媒介的表现力，在传统与创新的交汇中，感受艺术家们如何运用水墨为当代艺术创作注入更多可能性。

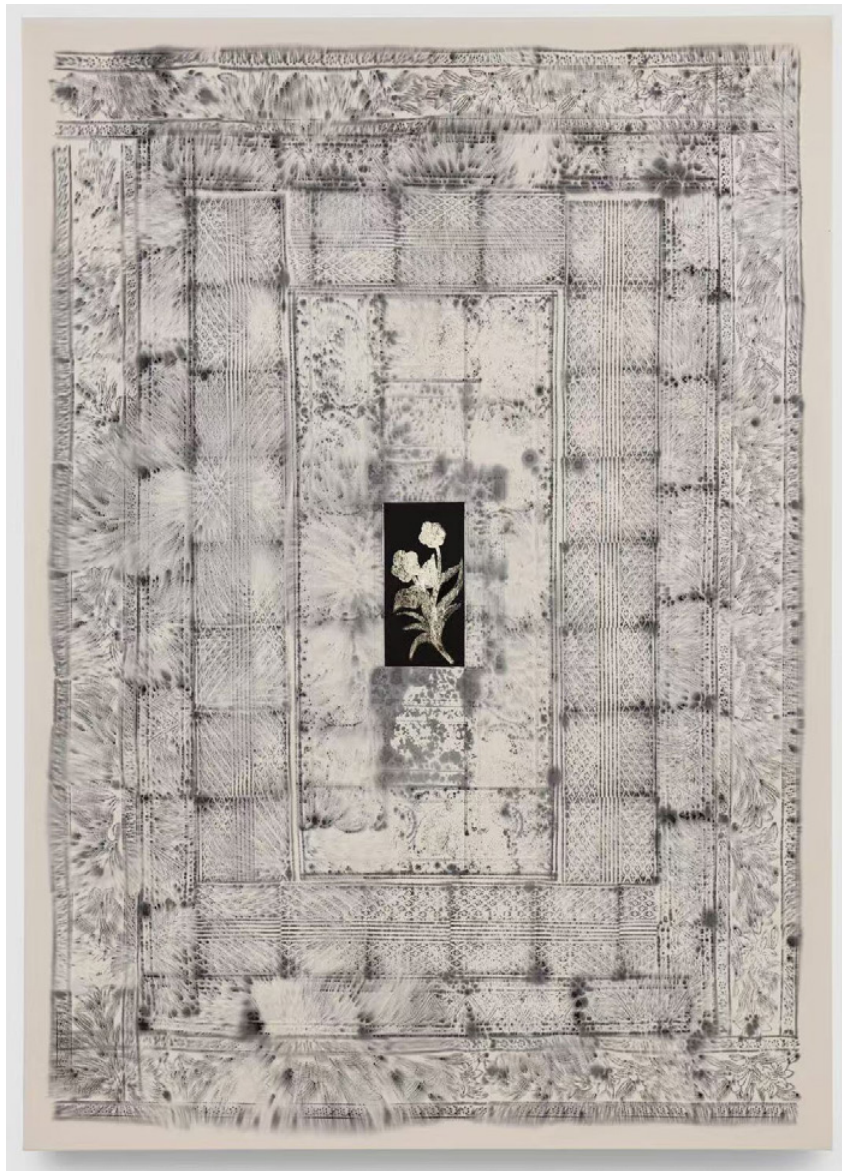
### Section Ink

Ink painting, as an important form of traditional Chinese art, has a long history and unique artistic characteristics rooted in the material of ink itself. Today, many artists integrate ink with other art forms in their creations, such as installation art, video, and performance art, further expanding the expressive possibilities of ink material.

Ink art has continuously innovated and developed with the changing times, ShanghART's artists are also exploring the contemporary transformation of this medium. In the context of contemporary art, the challenge is how to use the unique materiality of ink to add interest and vitality to the works. For example, post-90s artist Liu Yi cleverly integrates ink with animation, creating a series of ink animations and installation art pieces. Post-80s artist Sun Xun's new works were exhibited at the Centre Pompidou in France. His inspiration came from the latest animated films, and he presented them in the style of Song dynasty painting with intricate mounting and coloring, creating a distinctive animated world. Meanwhile, post-60s artist Wu Yiming uses ink to create modern crystal chandeliers and contemporary landscape paintings, delicate and vivid, with interwoven light and shadow, showcasing the infinite possibilities of ink.

Through this special section, we hope to give the audience a deeper experience of the expressive power of the ink medium. At the intersection of tradition and innovation, viewers will be able to feel how artists use ink to inject new possibilities into contemporary art.

# 韩梦云 HAN Mengyun



光明心

*Fruit of Tranquility*

2024

布面水墨、丙烯、白金金箔  
ink and colour on Xuan paper

210(H)\*150cm

HMY\_7679



# 刘毅 LIU Yi



## 无需经营的清晨与黄昏动画原稿 A-1

*Original painting of Morning and Dusk, and No More A-1*

2022

绢本上彩墨

ink and colour on silk

23(H)\*41cm (x 20 pieces)

LY2\_6136

# 刘毅 LIU Yi



无需经营的清晨与黄昏动画原稿 A-2

*Original painting of Morning and Dusk, and No More A-2*

2022

绢本上彩墨

ink and colour on silk

23(H)\*41cm (x 20 pieces)

LY2\_3806

# 孙 逊 SUN Xun



魔法星图之燦燦幻戏图

*Magic of Atlas - A Drama of Tanyi country*

2024

绢本上水墨

scroll painting

272(H)\*195cm | image 120\*130cm

SX\_2476

# 邬一名 WU Yiming



银杏 3

*The Ginkgo 3*

2013

宣纸上水墨

ink on Xuan paper

46(H)\*34cm | framed 61\*47.5\*5.5cm

WYM\_3032



# 邬一名 WU Yiming



华滋

*Luxuriant*

2012

宣纸上彩墨 | 丙烯

ink and colour on Xuan paper | acrylic

40(H)\*52cm (x 3 pieces)

WYM\_2852



# 徐震 XU Zhen



界面——基寺

*Interface - Key Monastery*

2024

绢本上水墨

ink on silk

260(H)\*188cm | image 102\*171cm

XZ\_R\_8725

# 徐震 XU Zhen



松崖秋色图 (视角海拔 124.04 千米)

*Autumn Scenery at the Pine Cliff (view of altitude 124.04 km)*

2024

绢本上水墨

ink on silk

215(H)\*76.5\*5cm | image 95\*68cm

XZ\_R\_9198







# 吕岩 LV Yan



风景

*Landscape*

2021

布上综合材料, 木炭、色粉、墨汁、岩彩、水彩  
charcoal, gouache, ink, mineral paint, watercolor on canvas

60(H)\*60cm

LVY\_3147

# 吕岩 LV Yan



风景

*Landscape*

2023

布上综合材料, 木炭、色粉、墨汁、岩彩、水彩  
charcoal, gouache, ink, mineral paint, watercolor on canvas

200(H)\*130cm

LVY\_6940



# 吕岩 LV Yan



无题

*Untitled*

2019~2020

布上综合材料, 木炭、色粉、墨汁、岩彩、水彩

charcoal, gouache, ink, mineral paint, watercolor on canvas

250(H)\*200cm

LVY\_7376

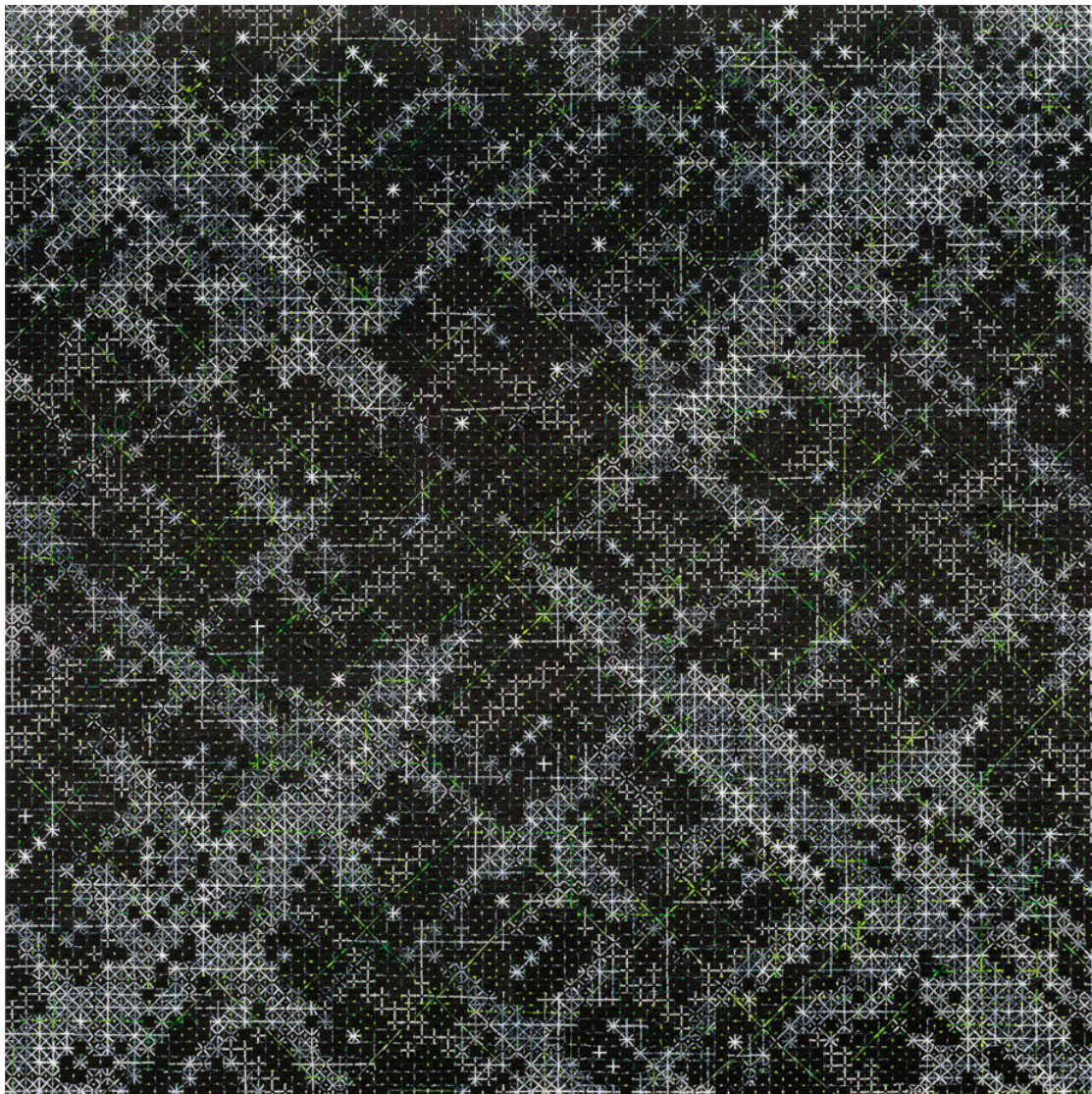
# ShanghART

香 格 纳 画 廊

Booth 1C09



# 丁乙 DING Yi



十示 2016-5

*Appearance of Crosses 2016-5*

2016

椴木板上丙烯雕刻

acrylic on basswood panel with engravings

240(H)\*240\*7cm

DY\_7300\_A



鲁钰 LU Yu



不限尝试次数

*Unlimited Attempts*

2025

木板上冷瓷土, 丙烯, 药品说明书, 彩票

resin clay, acrylic, printed medicine instruction and lottery on wood

120(H)\*120cm

LUY\_7897

# 李山 LI Shan



阅读 99

*Reading 99*

1999

布上丙烯

acrylic on canvas

180(H)\*70cm | framed 180\*76.5\*7cm

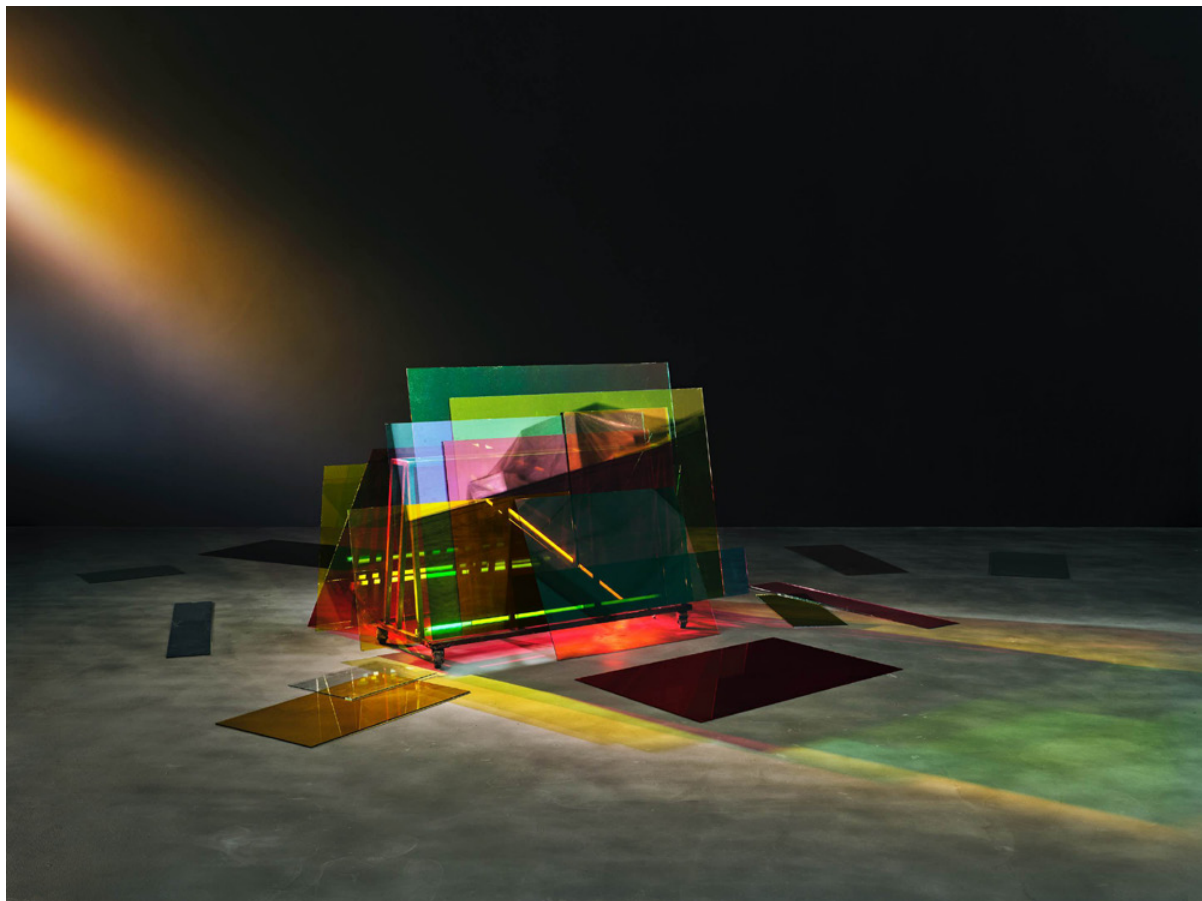
LSU075







# 陈 维 CHEN Wei



玻璃世界

*Fragile Architecture*

2024

收藏级喷墨打印, 裱于铝塑板, 硬化亚克力

archival inkjet print, mounted on aluminium composite panel,  
toughened acrylic

150(H)\*200cm

edition of 6 + 2AP

# 刘唯艰 LIU Weijian



肉

*Meat*

2022

布上丙烯

acrylic on canvas

50(H)\*50cm

LWJ\_7541



# 刘唯艰 LIU Weijian



恐慌

*Panic*

2024

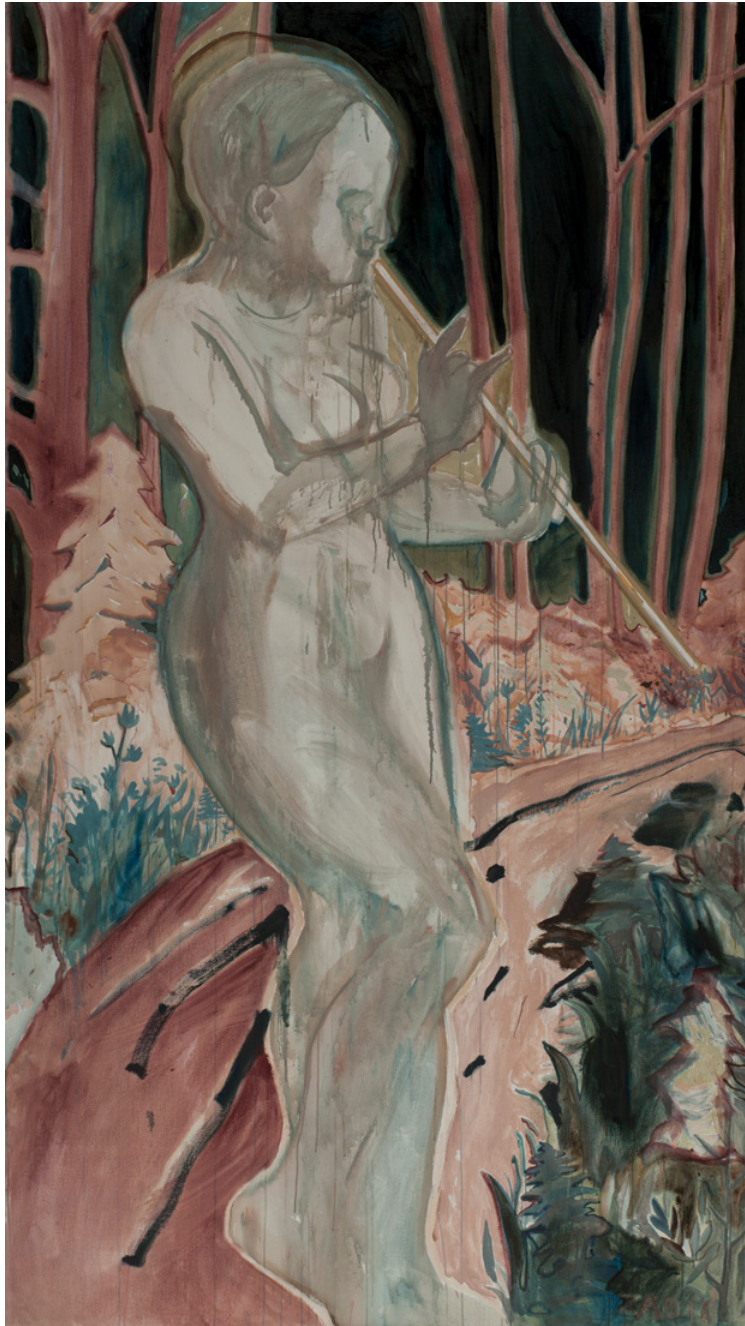
布上丙烯

acrylic on canvas

50(H)\*60cm

LWJ\_7145

# 赵洋 ZHAO Yang



唯有音乐

*Only Canto*

2016

布面油彩、丙烯

oil and acrylic on Canvas

300(H)\*170cm

ZY\_4890\_A



# 孙逊 SUN Xun



基督教

*Chrismon*

2017

木刻画

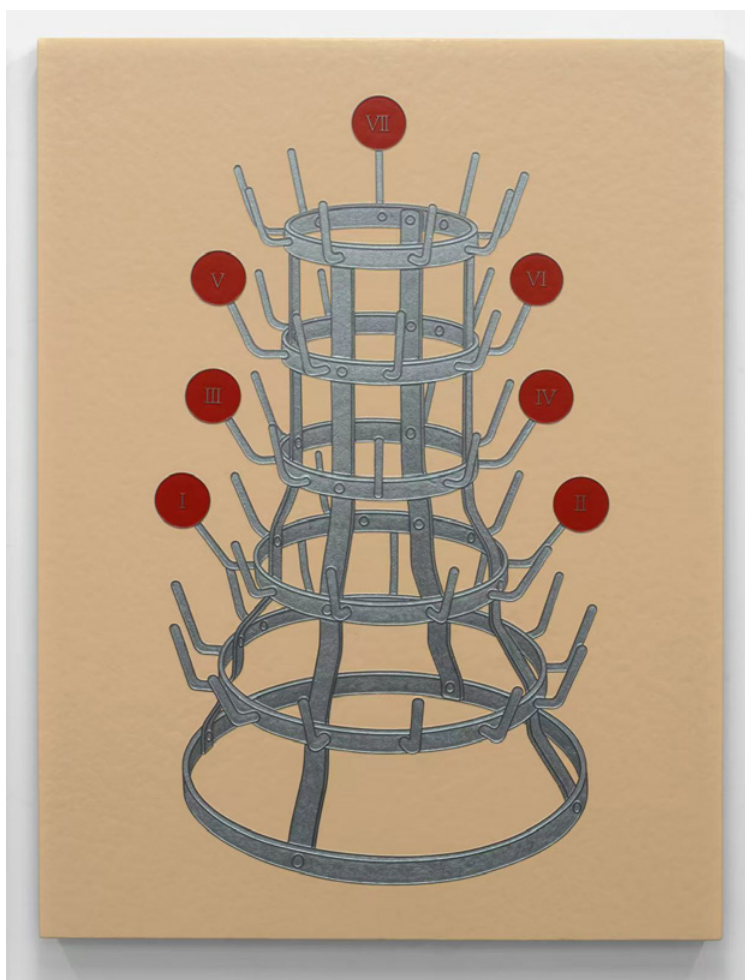
woodcut painting

136(H)\*113\*12cm | image 111\*91cm

SX\_1286



# 高磊 GAO Lei



## 从巴别塔到七封印

*From the Tower of Babel to the Seven Seals*

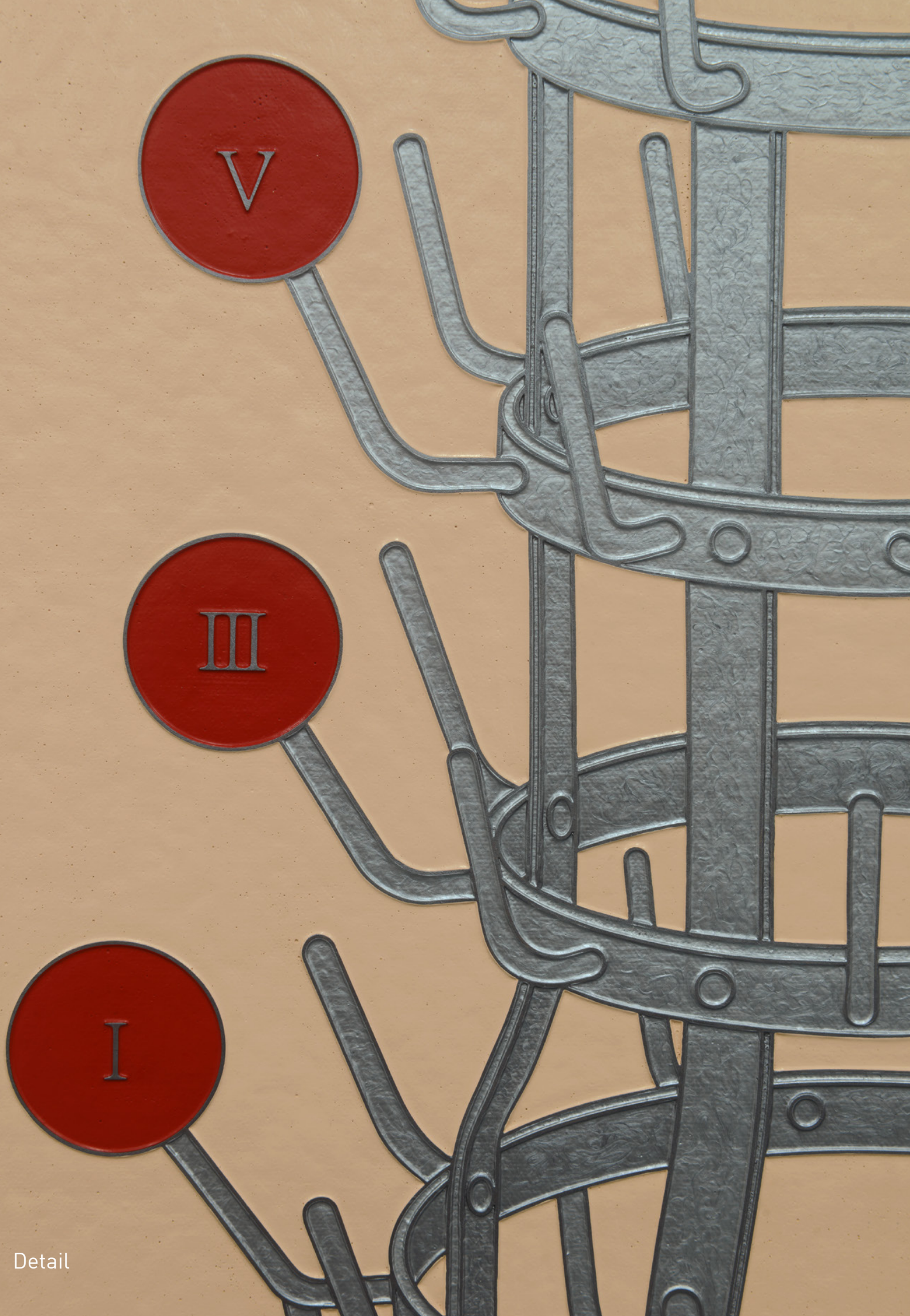
2025

布上丙烯、树脂

acrylic and resin on canvas

100(H)\*75\*5cm

GLEI\_1639



Detail



# 赵仁辉 Robert ZHAO



## 新加坡次生林指南

### *A Guide to a Secondary Forest of Singapore*

2024

收藏级喷墨打印

archival pigment print

108(H)\*150\*8cm, edition of 20 + 2AP

ZRH\_1243



# 张鼎 ZHANG Ding



不息 #1

*Endless #1*

2024

布上丙烯, 铝塑板

acrylic on canvas mounted on dibond

200(H)\*150\*5cm

ZD\_2763

# 徐赫 XU He



海边的卡夫卡  
*Kafka by the Sea*

2022

布上丙烯  
acrylic on canvas

200(H)\*155cm

XH\_5239

# 徐赫 XU He



秦始郎 2

*Qin Shilang 2*

2023

布上丙烯

acrylic on canvas

152(H)\*130cm

XH\_6375



# 蒋小余 JIANG Xiaoyu



暗能

*Dark Energy*

2024

布上油画

acrylic on canvas

210(H)\*180cm

JXYU\_4951

# 蒋小余 JIANG Xiaoyu



困兽

*Beast of Burden*

2024

布上油画

acrylic on canvas

150(H)\*170cm

JXYU\_4519



牟雪 MU Xue



***BD\_ 斗转星移 #3***  
***BD\_Star Dance No.3***

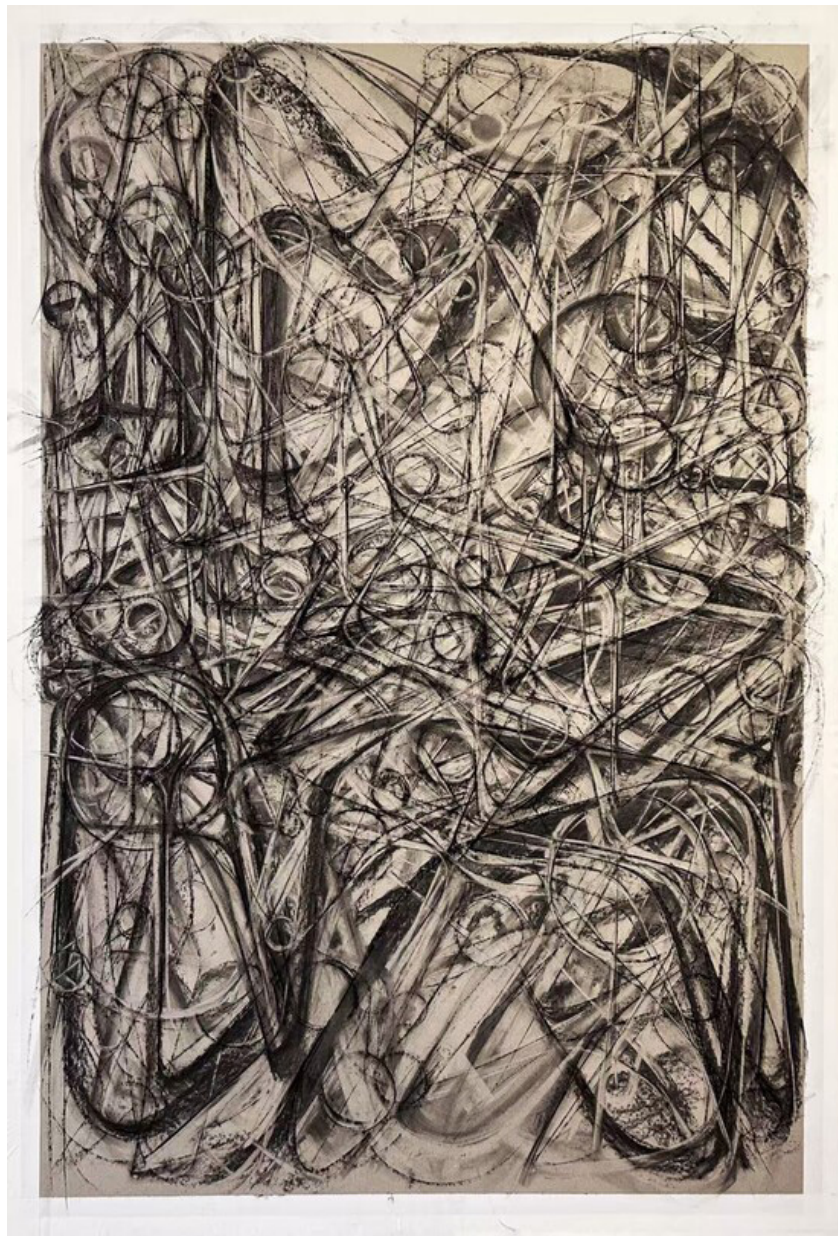
2025

纸上炭笔  
charcoal on paper

155(H)\*105cm

MX\_0648

牟雪 MU Xue



***BD\_ 斗转星移 #4***  
***BD\_Star Dance No.4***

2025

纸上炭笔  
charcoal on paper

155(H)\*105cm

MX\_2569



# 汪琦琦 WANG Qiqi



错位 X

*Dislocation X*

2024

布上丙烯 | 色粉

acrylic on canvas | pastel

150(H)\*120cm

WQQI\_7852

# 汪琦琦 WANG Qiqi



身体副本 V

*Replica of the Body V*

2023

布上丙烯 | 色粉

acrylic on canvas | pastel

100(H)\*80cm

WQQI\_0215

王—— WANG Yiyi



石生平菇

*Petriceps - Pleurotus Ostreatus*

2021

陶

stoneware

17(H)\*40\*47cm

WYYI\_5658



王一 WANG Yiyi



石生榆黄菌

*Petriceps - Pleurotus Citrinopileatus*

2021

陶

stoneware

17(H)\*38\*52cm

WYYI\_8884

# 萧文杰 XIAO Wenjie



坨 02082024  
*Lump 02082024*  
2024

布上油画 | 丙烯  
oil on canvas | acrylic  
170(H)\*170cm  
XWJ\_6885

# 萧文杰 XIAO Wenjie



坨 28112024

*Lump 28112024*

2024

布上油画 | 丙烯

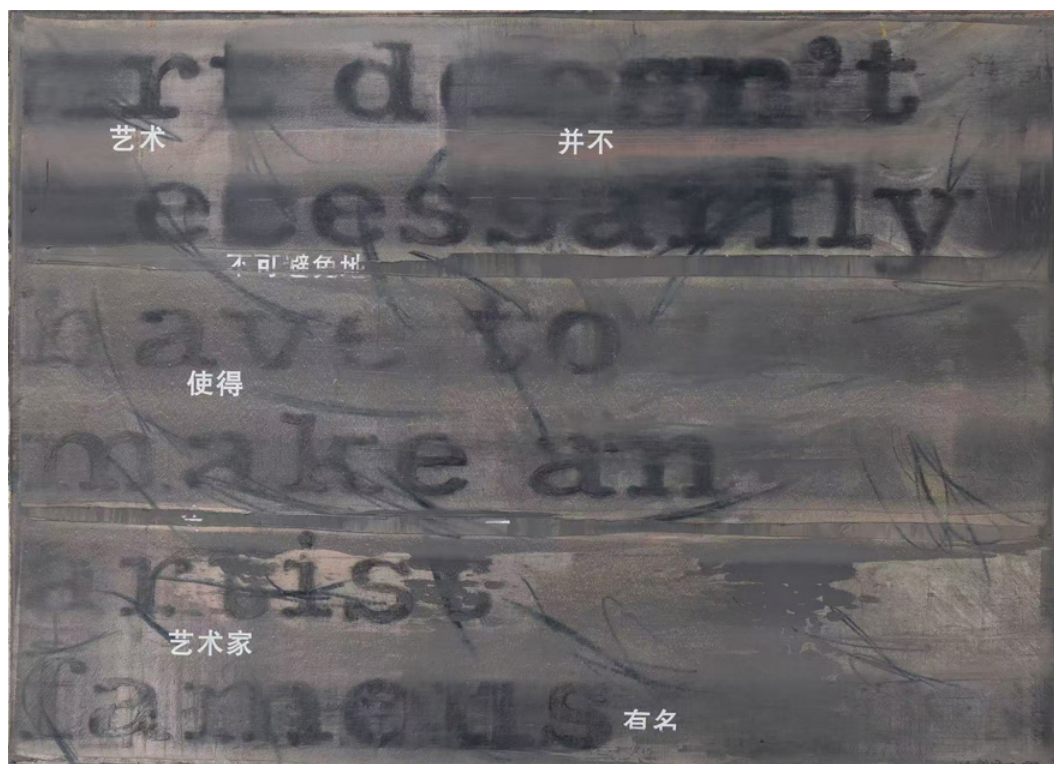
oil on canvas | acrylic

170(H)\*170cm

XWJ\_7009



# 陈问村 CHEN Wencun



艺术的锅

*Side Effect*

2024

布上油画

acrylic on canvas

59.5(H)\*79.5cm

CWC\_4492

# 曹 澍 CAO Shu



妖糖

*Phantom Sugar*

2023

单路视频

single-channel video

15 minutes 10 seconds

OT\_4701-3

# ShanghART

## 香 格 纳 画 廊

ShanghART WB Central 香格纳西岸中环  
徐汇区西岸瑞宁路 288 号 4 幢, 上海, 中国 200032  
Bldg 4, No. 288 Ruining Road, Xuhui District, Shanghai, China 200032  
T: +86 21-6359 3923 | +86 18917671295 | info@shanghartgallery.com

ShanghART M50 香格纳 M50  
普陀区莫干山路 50 号 16 号楼, 上海, 中国 200060  
Bldg 16, 50 Moganshan Rd., Putuo District, Shanghai 200060, China  
T: +86 21-6359 3923 | F: +86 21-6359 4570 | info@shanghartgallery.com

ShanghART SUHE 香格纳苏河  
静安区文安路 30 号苏河皓司 204, 上海, 中国  
ShanghART SUHE, 204 SUHE HAUS, 30 Wen'an Road, Jing'an District, Shanghai, China

ShanghART Beijing 香格纳北京  
朝阳区机场辅路草场地 261 号, 北京, 中国 100015  
261 Cao Chang Di, Old Airport Road, Chaoyang District, Beijing 100015, China  
T: +86-10 6432 3202 | F: +86-10 6432 4395 | infobj@shanghartgallery.com

ShanghART Singapore 香格纳新加坡  
吉门营房, LOCK 路 9 号 02-22, 新加坡 108937  
Gillman Barracks, 02-22, 9 Lock Road, Singapore 108937  
T: + 65 6734 9537 | F: + 65 6734 9037 | info@shanghartsingapore.com