

# 低級景觀

## ELEMENTARY SPECTACLE

石青、邵一雙人展 | Exhibition with Shi Qing & Shao Yi

2010年7月10日 - 8月20日 | 香格納畫廊H空間, 中國, 上海 10 July - 20 August, 2010 | ShanghART H-Space, Shanghai, China

一个是科研型艺术家，一个是“小制作”艺术活动的发起人，石青与邵一的二人展《低级景观》均以现成、粗简的材料，缔造出风格迥异的人工景观，更确切的说法是其各自定义的生态系统。

石青选择了聚氨酯泡沫、石膏、面粉、砖块、瓦楞纸板等日常廉价材料来“制造地理”。这些具有临时性、脆弱性、辅助性以及可变性的材料所制造的“地理”，并非是当下真实自然的写生，而是来自于艺术家的视觉政治系统对于景观的抵制。他延续着这两年来“以退为进”的创作策略，通过将景观的形态与发生、稳定与演化作为一种间接参照体来反思抽象化的系统。这个系统从模拟自然出发，不同材料在其中循环、覆盖、镂空、腐蚀、发酵，以此来暗示系统内部与外部的动态关系。

邵一的作品则取材于传统的吉祥图案、现代工业模具、民间的辟邪物甚至某些机构的徽章，从平面、立体到装置，综合性地构建出一套独特的信仰符号体系。他将如意、元宝、貔貅、蝙蝠等传统的吉祥图案组合起来，形成极富民间年画风情的抽象生物或风景装饰画；收集而来的现代工业木模在重新拼装之后，变身为夸张怪诞的极简图腾雕塑；特制的宣传木栏上一面挂上了日常生活中的现成品或是辟邪物，另一面则挂上各种大号版的铝制徽章，彰显着平凡之物的不同寻常之感召力。

By Lu Leiping  
July, 2010

One is an artist with a scientific researcher nature, one is the initiator of “The Small Production”: Elementary Spectacle, an exhibition by Shi Qing and Shao Yi, presents different artificial landscapes, or more precisely, defines ecosystems specific to each of the two artists.

Shi Qing’s “Geographic system” is composed of polyurethane foam, gypsum, flour, bricks, corrugated cardboards and other low-cost daily materials, that are ephemeral, fragile, ancillary and modifiable. “Geographic system” isn’t a mere reproduction inspired from real Nature, but a rejection of a landscape by the artist’s visual political system. These last two years Shi Qing made use of the creating strategy “retreat in order to advance”, meditating on an abstract system through landscapes’ configuration and occurrence, stability and evolution. This system is issued

from the imitation of nature, where various materials are flowing, being covered, hollowed, corroded and fermented reflecting the in and out dynamic relation of the system.

Shao Yi's works are composed of traditional auspicious patterns, modern industrial molds, folk amulets and even administrative badges. From two and three-dimensional works to installations, Shao Yi builds a unique system of faith-related symbols. He turns auspicious patterns such as Ru yi, Yuan bao, Pi xiu and bats into abstract creatures or decorative landscape paintings, while modern industrial wood molds are reassembled into curious and extravagant totemic sculptures. Daily ready-mades or amulets are displayed on one side of wooden billboards and large scale aluminum badges on the other, expanding common materials' numerous evocative possibilities.





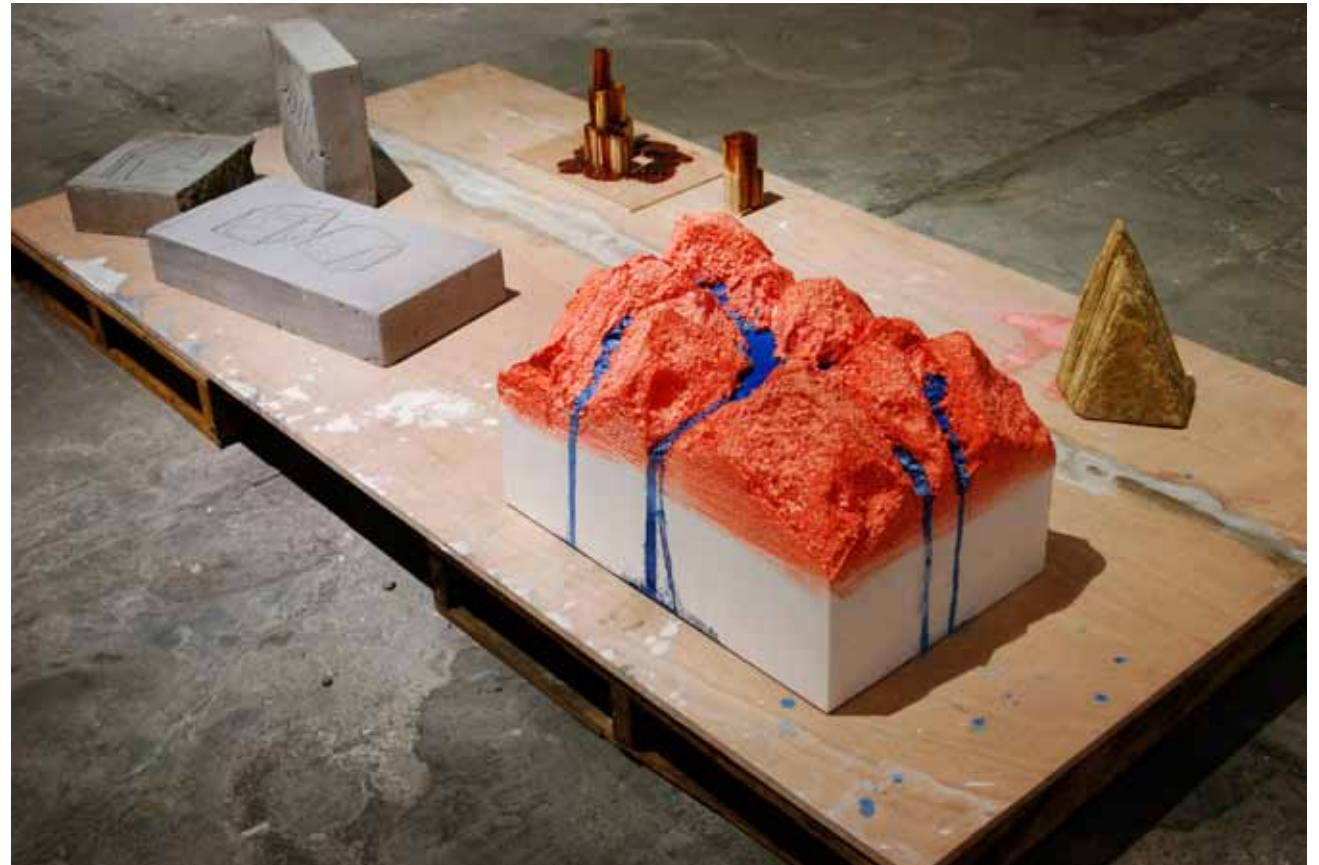
石 青

Shi Qing



石青作品 场景 Shi Qing's works Installation view





石膏  
废墟后却会变成花园  
建筑砖、泡沫、色浆、木块  
尺寸可变 2010  
Shi Qing  
*Garden after Ruins*  
Construction bricks, foam, paste & wood  
Dimension variable



石膏 一个被自然所困的岛屿 面粉、泥、石膏、硝基漆、工具箱 2010  
Shi Qing *The Island Stranded by Nature* Flour, cement, gypsum, nitro & toolbox 80×40×40 cm



石青  
从内部涌出的物质都是没有分类的  
石膏、色浆、铅管、塑料管、纱布 2010  
Shi Qing  
*The Material Emission from Internal Cannot be Classified*  
Plaster, paste, lead pipes, plastic pipes, gauze  
120×120×40 cm

石青  
系统只能让理性更加黑暗  
布上丙烯 2010  
Shi Qing  
*Only System Makes the Rationality Gloomier*  
Acrylic on canvas  
100×100 cm



石青  
断裂是内陆河重生的唯一手段  
泡沫、石膏、色浆、木块 2010

Shi Qing  
*Fracture, The Only Way to be Reborn of Inland River*  
Foam, plaster, paste & wood  
50×240×100 cm



石青  
透视伦理  
布上丙烯 2010  
Shi Qing  
*Perspective Ethics*  
Acrylic on canvas 40×50 cm



石青 时间切割河床 面粉、泥、泡沫、丙烯 2010  
Shi Qing *Time Cuts the Riverbed* Flour, mud, foam & acrylic 120×80×40 cm



石青  
山外山 1  
布上丙烯 2010  
Shi Qing  
*Mountain without Mountains 1*  
Acrylic on canvas  
160×120 cm



石青  
山外山 2  
布上丙烯 2010  
Shi Qing  
*Mountain without Mountains 2*  
Acrylic on canvas  
160×120 cm



石青  
对称漂移  
纸板、脚轮、木板 2010  
Shi Qing  
*Symmetry Drift*  
Board, caster & wood  
50×50×50 cm x 4 Pieces

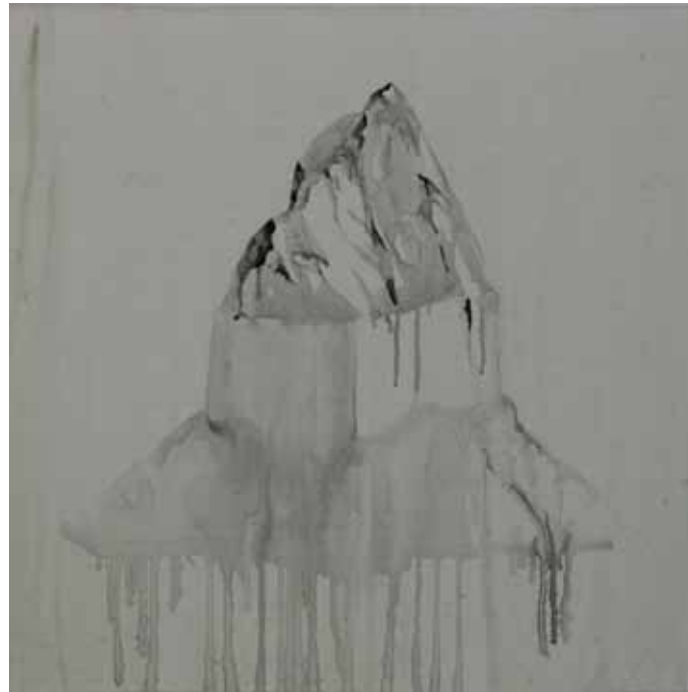
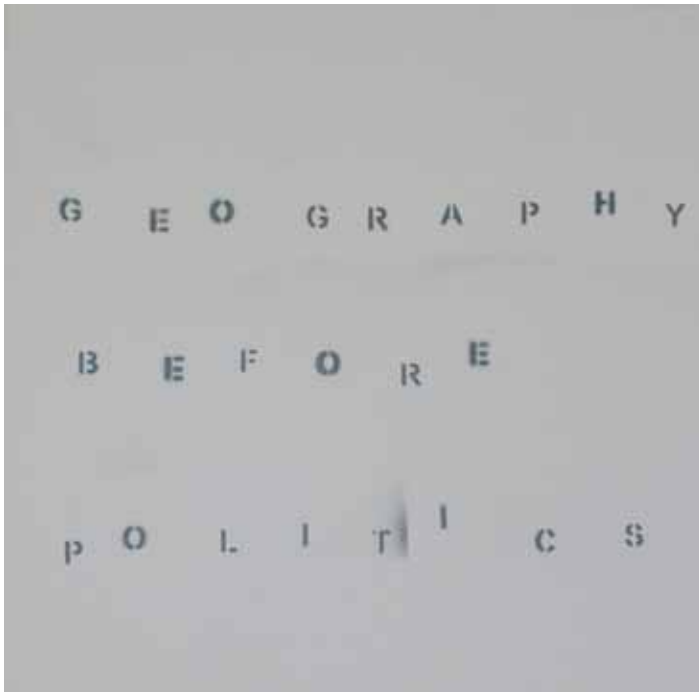


石膏 劳动创造山的剩余价值 石膏、泡沫、模板、色浆 2010  
Shi Qing *Labor Generate the Surplus Value of Mountains* Plaster, foam, template & paste 110×120×120 cm x 2 Pieces



石青 地理对抗景观 布上丙烯 2010  
Shi Qing *Geography Against Landscape* Acrylic on canvas 50×50 cm 50×60 cm 60×50 cm 40×50 cm 40×50 cm



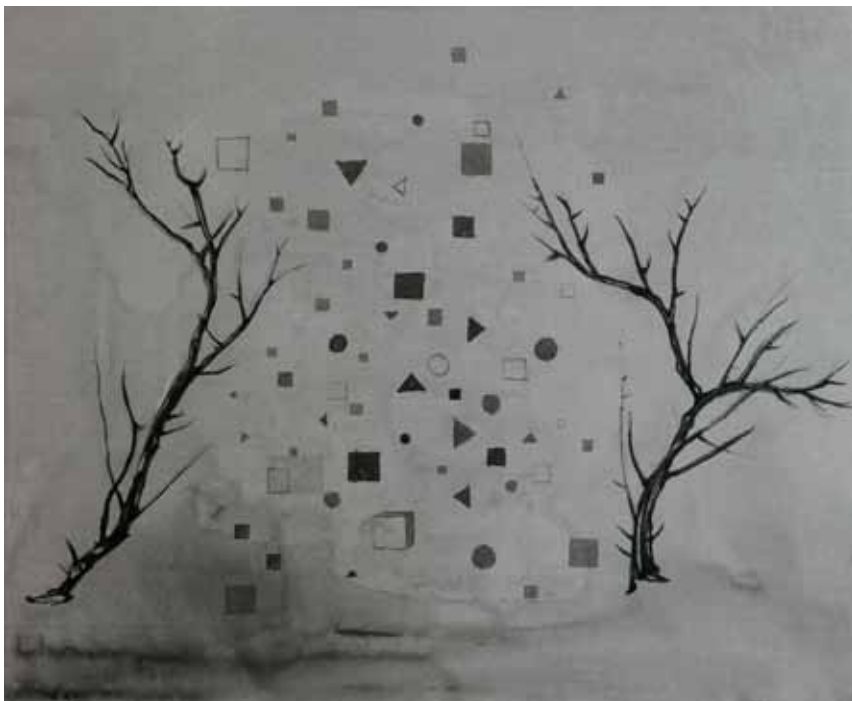


石青  
地理先于政治  
布上丙烯 2010  
Shi Qing  
*Geography Before Politics*  
Acrylic on canvas  
100×100 cm x 2 Pieces



石青 圣地模型 泡沫、模块、脚轮 2010  
Shi Qing *Model of Holy Land* Bubble, modules, casters 90×80×60 cm





石青 造型基础 布上丙烯 2010  
Shi Qing *Modeling Basis* Acrylic on canvas 50×61 cm



石青 分水岭尽可能制造更多的线索 布上丙烯 2010  
Shi Qing *Watershed Generates as more Clues as It Could* Acrylic on canvas 120×80 cm



石青 世界轴心转移引发气象症候 布上丙烯 2010  
Shi Qing *The World Axis Shifting Causes Weather Symptom* Acrylic on canvas 60×50 cm



石青 流体动力学的第二性征 布上丙烯 2010  
Shi Qing *The Second Feature of Fluid Dynamics* Acrylic on canvas 50×60 cm



石青 从地理到物体 布上丙烯 2010  
Shi Qing *From Geography to Object* Acrylic on canvas 50×40 cm

邵一  
Shao Yi



邵一作品 场景 Shao Yi's works Installation view



邵一 XX在此系列 综合材料 10件 2010  
Shao Yi XX is Here Mixed media 10 pieces 100×180×46 cm



邵一 XX在此系列 综合材料 10件 2010  
Shao Yi XX is Here Mixed media 10 pieces 100×180×46 cm





邵一 XX在此系列 综合材料 10件 2010  
Shao Yi XX is Here Mixed media 10 pieces 100×180×46 cm



邵一 XX在此系列 综合材料 10件 2010  
Shao Yi XX is Here Mixed media 10 pieces 100×180×46 cm



邵一 XX在此系列 综合材料 10件 2010  
Shao Yi XX is Here Mixed media 10 pieces 100×180×46 cm





邵一  
室那室那  
木模 2010  
Shao Yi  
*Shi Na Shi Na*  
Wooden mold  
40×40×20 cm  
底座 Base dimension: 40×40×80cm



邵一  
伊薩伊薩  
木模 2010  
Shao Yi  
*Yi Xi Yi Xi*  
Wooden mold  
27×49×27 cm  
底座 Base dimension: 40×40×80cm



邵一  
陀囉陀囉  
木模 2010  
Shao Yi  
*Tuo La Tuo La*  
Wooden mold 22×38×22 cm  
底座 Base dimension: 40×40×80cm



邵一  
摩囉摩囉  
木模 2010  
Shao Yi  
*Mo La Mo La*  
Wooden mold  
29×53×29 cm  
底座 Base dimension: 40×40×80cm



邵一  
度慮度慮  
木模 2010  
Shao Yi  
*Du Lu Du Lu*  
Wooden mold  
18×63×8.5 cm  
底座 Base dimension: 40×40×80cm

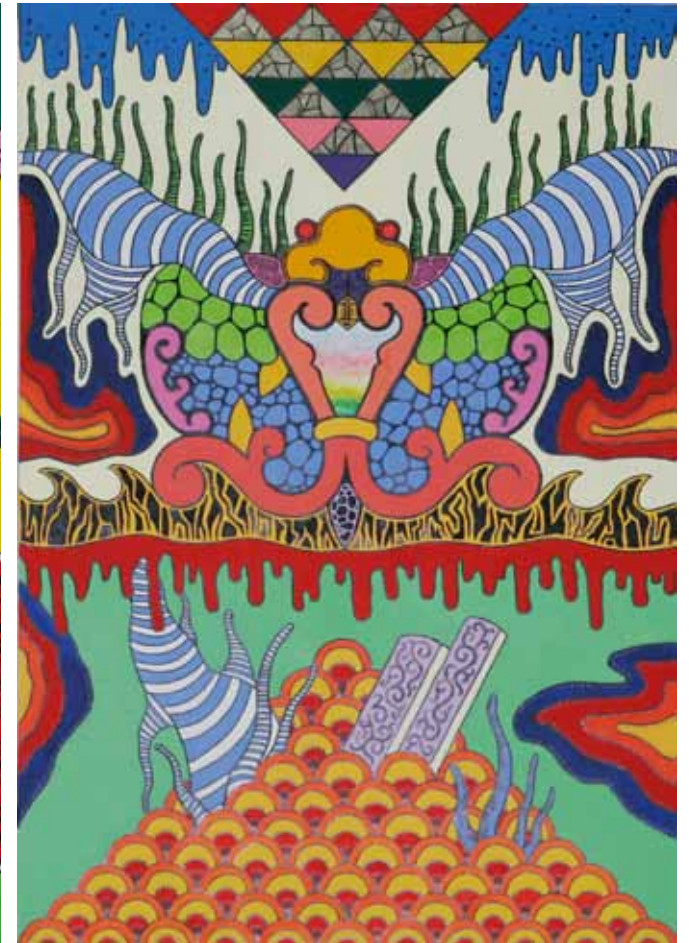


邵一  
薩婆薩婆  
木模 2010  
Shao Yi  
*Sa Po Sa Po*  
Wooden mold  
38×46×38 cm  
底座 Base dimension: 40×40×80cm





邵一  
平安  
布上丙烯 2010  
Shao Yi  
Peace Acrylic on canvas  
150×200 cm



邵一  
祈福  
布上丙烯 2010  
Shao Yi  
Pray Acrylic on canvas  
150×105 cm





邵一  
和合  
布上丙烯 2010  
Shao Yi  
Harmony  
Acrylic on canvas  
150×105 cm



邵一  
如意  
布上丙烯 2010  
Shao Yi  
Wish  
Acrylic on canvas  
150×200 cm

## 石青

## 简历

## 基本资料

1969 出生于中国包头，现居中国北京

## 个展

2010 还不够久，北京市朝阳区酒仙桥路4号798艺术区中一街 空间站

2009 石青 我回来了，寻找甜蜜的家，Artlier 画廊，福冈

半途而废，石青个展，香格纳北京

2007 诸葛熊猫奇遇记，石青新作计划，香格纳F空间，上海

2006 电控制上海，比翼艺术空间，上海

2004 过期预言，东大名艺术中心，上海，中国

2003 黑禁忌，25000里文化传播中心，北京

## 群展

2010 低级景观——石青、邵一双人展，香格纳H空间，上海

丛林：中国当代艺术生态管窥，站台中国，北京

2009 资产阶级化了的无产阶级，当代艺术展在松江，松江创意工房，上海

2009 上海艺术博览会国际当代艺术展-发现项目，艺术博览会 上海展览中心

Shanghai Kino, Shanghai Kino, 伯尔尼美术馆，瑞士

另一个现场——艺术的计划、概念与想法，香格纳H空间，上海

2008 “失眠”摄影展，比翼艺术中心

乡愁，记忆与虚构的现实，梯空间，北京798艺术区

青年艺术家群展，香格纳F空间，上海

四季新颜，中国第三届媒体艺术节，中国美术学院象山校区

美国圣达菲双年展(2008)，

2007 影子的炼金术，第三届连州国际摄影年展，

被枪毙的方案，40多位中国艺术家/50多个被枪毙的方案，可当代艺术中心，上海

个人的态度2，录像、照片与装置展，香格纳H空间，上海

NONO，11位艺术家自主策划的最新作品展，长征空间，北京

没事，当代艺术展，浙江杭州西湖区清河坊大井巷95号胡庆余堂中药博物馆

2006 与刀，井ART画廊，上海，中国

混生—当代艺术展，方音艺术空间，北京

个展，2577创意大院，上海

第二届广州三年展，别样：一个特殊的现代化实验空间，广东美术馆，广州

2005 锦囊妙计—当代艺术展，Hartnett 画廊，罗切斯特大学，纽约，美国

24小时—当代艺术展，北京电影制片厂摄影棚，北京，中国

逼真，泰康顶层空间，北京

第二届布拉格双年展，Expanded Painting and Acción Directa，布拉格，捷克

乱伦，站台中国，北京，中国

第四届釜山双年展，釜山市立美术馆，釜山，韩国

2004 窗外，东京国际基金交流中心，东京，日本；Zip 艺术空间，汉城，韩国

欢乐颂（木马记升级版），国际当代艺术展，圣划艺术中心，南京

2003 木马记—国际当代艺术展，圣划艺术中心，南京

后感性：内幕，七色光儿童剧院，北京

左翼，中国当代艺术展，左岸工社，北京

长征：一个行走中的视觉展示，四川甘孜

2002 范明珍和范明珠，孛生艺术展，金沙江1508号2楼，上海

报应，芥子园，北京

2001 非线性叙事—新媒体艺术节，中国美术学院，杭州

石青-乌尔善二人展，芥子园，北京，中国

声音2-艺术展，芥子园，北京

后感性：狂欢，北京电影学院，北京

藏酷新媒体艺术节，藏酷新媒体空间，北京

煲，奥斯陆艺术家中心，奥斯陆，挪威

声音-艺术展，当代美术馆，北京

2000 家？，当代艺术展，月星家具广场，上海

精神食粮：洞察中国当代艺术，埃因霍温 CANVAS 基金会，荷兰

1999 北京在伦敦，当代艺术研究院，伦敦，英国

后感性：异形与妄想，芍药居公寓地下室，北京

## Shi Qing

Biography		Confusion Life, Funart Gallery,Beijing
Basic		Solo Exhibition, 2577 Creative Garden, Shanghai
1969	Born in Inner Mongolia, China, Lives and works in Beijing	The Second Guangzhou Triennial, BEYOND: an extraordinary space of experimentation for modernization, Guangdong Museum of Art, Guangzhou
Solo Exhibitions		
2010	Not long enough, Space Station, No. 4 Jiuxianqiao Rd, 798 Art District, Beijing	2005 Playground of Authorship—Complete Art Experience Project, Hartnett Gallery,University of Rochester,New York,USA
2009	Shi Qing TADAIMA, Looking for Sweet Home, Gallery Artlier, Fukuoka	24 Hours—Complete Art Experience Project, Beijing Film Studio,Beijing
	Halfway House, Shi Qing Solo Exhibition, ShanghART Beijing	True to Life, Taikang Top Space, Beijing
2007	When Zhuge Liang Meets Panda, A New Project by Shi Qing, ShanghART F-Space, Shanghai	Prague Biennale 2, National Gallery,Prague, Czech Republic
2006	Electricity, Bizart Art Center,Shanghai	Incest-Complete Art Experience Project, No. 1,Platform China,Beijing
2004	Lost Prediction, DDM Wrehouse Art Center,Shanghai	4th Busan Biennale—Contemporary Art Exhibition, Busan Metropolitan Art Museum,Busan, Korea
2003	Black Taboo, 25000 Cultural Transmission Center,Beijing	2004 Out the Window:Spaces of Distraction, The Japan Foundation Asia Center, Tokyo,Japan; Project space Zip, Seoul,Korea
Group Exhibitions		
2010	Elementary Spectacle: exhibition with Shi Qing & Shao Yi, ShanghART H-Space, Shanghai	Return Nature II :Pastoral, An Exhibition of International Contemporary Art, Shenghua Arts Center, Nanjing
	Jungle: A Close-Up Focus on Chinese Contemporary Art Trends, Platform China, Beijing	2003 Return Nature I: Trojan Horse—An Exhibition of International Contemporary Art, Shenghua Arts Center, Nanjing
2009	Bourgeoisified Proletariat, Contemporary Art Exhibition in Songjiang , Shanghai Songjiang Creative Studio, Shanghai	Post-Sense Sensibility: Inside Story, Magazine Children's Theater, Beijing
	ShContemporary 09-Discoveries, Art Fairs Shanghai Exhibition Center	Left Wing, An exhibition of Chinese Contemporary Art, Left Bank Community, Beijing
	Shanghai Kino, Shanghai Kino, KUNSTHALLE BERN, Switzerland	The Long March: A Working Visual Display, Sichuan Ganzi
	Another scene - artists' projects, concepts and ideas, ShanghART H-Space, Shanghai	2002 Fan Mingzhen & Fan Mingzhu - Glad to meet you, (Twin exhibition), Jin Sha Jiang Rd., Shanghai
2008	Insomnia Photographs Exhibition, Bizart Art Center	Retribution, msn art center, beijing
	Homesickness, Memory and Virtual Reality, T Space Dashanzi 798 Art District, No.2 Jiuxianqiao Road, Chaoyang District, Beijing	2001 Non-Linear Narrative:The New-Media Art Festival, China Academy of Fine Art, Hangzhou
	Young Artists Group Exhibition, ShanghART F-Space, Shanghai	Shi Qing and Wuershan Art Exhibition, MSN Art Center,Beijing
	Artseason, The Third China New Media Art Festival, China Art Academy, Hangzhou	Sound-2-Sound Art Exhibition, MSN Art Center,Beijing
	Santa Fe Biennale (U.S.A, 2008),	Post-Sense Sensibility:Spree, Beijing Film Academy, Beijing
2007	The Alchemy of Shadows, Lianzhou International Photo Festival (LIPF) 2007,	LOFT New Media Art Exhibition, LOFT New Media Art Center, Beijing
	Rejected Collection, More the 40 Chinese Artists /Over 60 Rejected Proposals, Ke Center for Contemporary Arts, Shanghai	Hotpot, Kinesisk Samtidskunst, Hustnernes Hus, Oslo, Norway
	Individual Position 2, Video, Photo, and Installation, ShanghART H-Space, Shanghai	2000 Sound -Art Exhibition, Contemporary art Gallery, Beijing
	NoNo, Self-curated Exhibition of latest artworks by 11 individual artists, Long March Space, Beijing	Home?, Contemporary Art Exhibition, Yuexing Furniture Plaza, Shanghai
	It's All Right, Contemporary Art Exhibition, Hu Qing Tang Museum of Traditional Chinese Medicine, Hangzhou	1999 Food for Thought: An Insight in Chinese Contemporary Art, Canvas world art/ Canvas Foundation, Amsterdam, Holland
2006	With the Sword, Jing Art Gallery, Shanghai	Beijing in London, ICA, London,UK
		Post-Sense Sensibility: Alien Bodies and Delusion, the basement of Shaoyaoju apartment, Beijing

## 邵一

## 简历

## 基本资料

出生于 1967, 工作和生活在 杭州、上海

## 个展

2008 走光, 上海比翼艺术中心, 上海

## 群展

2010 低级景观——石青、邵一双人展, 香格纳 H 空间, 上海

警察和她, 常德路 621 号 (近武定路)

礼节的历史, 林达嘉和顾思明共同策展, 艺法画廊, 常德路 621 号 (近武定路), 上海

杭州艺术博览会, 和平国际会展中心, 杭州

2009 来自画廊仓库的东西 2, 香格纳 H 空间, 上海

来自画廊仓库的东西, 香格纳 H 空间, 上海

黑板, 香格纳 H 空间, 上海

“打盆”当代艺术展, 非艺术中心, 上海

2008

断舌, 梯空间

“失眠”摄影展, 比翼艺术中心

违章建筑 II, 北京长征空间

“小制作”系列活动, 杭州、上海

2006

没事, 当代艺术展, 浙江杭州西湖区清河坊大井巷 95 号胡庆余堂中药博物馆

很多灰 2, 香格纳 H 空间, 上海

2005

很多灰, 影像艺术展, 比翼艺术中心, 上海

The Elegance of Silence, 森美术馆, 东京

2004

62761232 (快递展), 当代艺术展, 比翼艺术中心, 上海

“迷宫”2004 中国新媒体艺术节, 中国美术学院, 杭州

丢失 ING, 没 Lost, LOFT 49#, 杭州

让一些念头被看到, 杭师院现代美术馆

格式化, 当代艺术展, 31# 酒吧, 杭州

什么艺术展: 黑方, Noanoa 中心, 西安

什么艺术展: 白方, 陕西省美术博物馆, 西安

2003

“冢”当代艺术展, 31# 艺术空间, 杭州

“1119 JOKER”影像展, 杭州

“叫吃”装置方案展, 杭州

白塔岭, 当代艺术展, 白塔岭艺术空间, 杭州

## Shao Yi

### Biography

#### Basic

Born In 1967, Works and lives in Hang Zhou, Shanghai

#### Solo Exhibitions

2008 "Light Fogging", BizArt Art Center, Shanghai

#### Group Exhibitions

- 2010 Elementary Spectacle: exhibition with Shi Qing & Shao Yi, ShanghART H-Space, Shanghai  
 Police and Her, 621 chang de road (near wuding road)  
 The History of Etiquette, curated by Darja Lin & Alexis Kouzmine Karavaieff, ifa gallery, 621 changde road (near wuding lu), Shanghai  
 HangZhou Art Fair, Hangzhou Peace International Exhibition Center, Hangzhou
- 2009 Things from the gallery warehouse 2, ShanghART H-Space, Shanghai  
 Things from the gallery warehouse, ShanghART H-Space, Shanghai  
 MUTE, ShanghART Gallery, Shanghai  
 Blackboard, ShanghART H-Space, Shanghai  
 "Interrupt" Contemporary Art Exhibition, Fei Contemporary Art Center, Shanghai
- 2008 Chinese Freedom, T SPACE  
 Insomnia Photographs Exhibition, Bizart Art Center  
 Building Code Violations II , Long March Space, Beijing  
 The Series Of "Small Productions", HangZhou&ShangHai
- 2006 It's All Right, Contemporary Art Exhibition, Hu Qing Tang Museum of Traditional Chinese Medicine, Hangzhou  
 A lot of Dust 2, ShanghART H-Space, Shanghai
- 2005 A Lot of Ash- A Lot of Dust, Videos & Performance, Bizart Art center, Shanghai  
 The Elegance of Silence, Mori Art Museum, Tokyo
- 2004 Dial 62761232 (Express Delivery Exhibition), Contemporary Art Exhibition, BizArt, Shanghai  
 "Maze""New Media Art Festival of 2004 China, China Academy of Art, Hangzhou  
 Losting, No Lost, 49th Loft, Hangzhou  
 Let the Idea to See, Hangzhou  
 Format, Contemporary Art Exhibition, 31#Bar, Hangzhou, China  
 Is it Art? - Black Show, Noanoa Center, Xi'an  
 Is it Art?, White show, Shanxi Provincial Art Museum, Xi'an
- 2003 "Tomb" Modern Art Exhibition, 31th Art Center, Hangzhou  
 "1119 Joker"Image Exhibition,, Hangzhou  
 "Order To Eat"Installation Scheme Exhibition, Hangzhou  
 Bai Ta Ling, Contemporary Art Exhibition, Bai Ta Ling Art Space, Hangzhou