

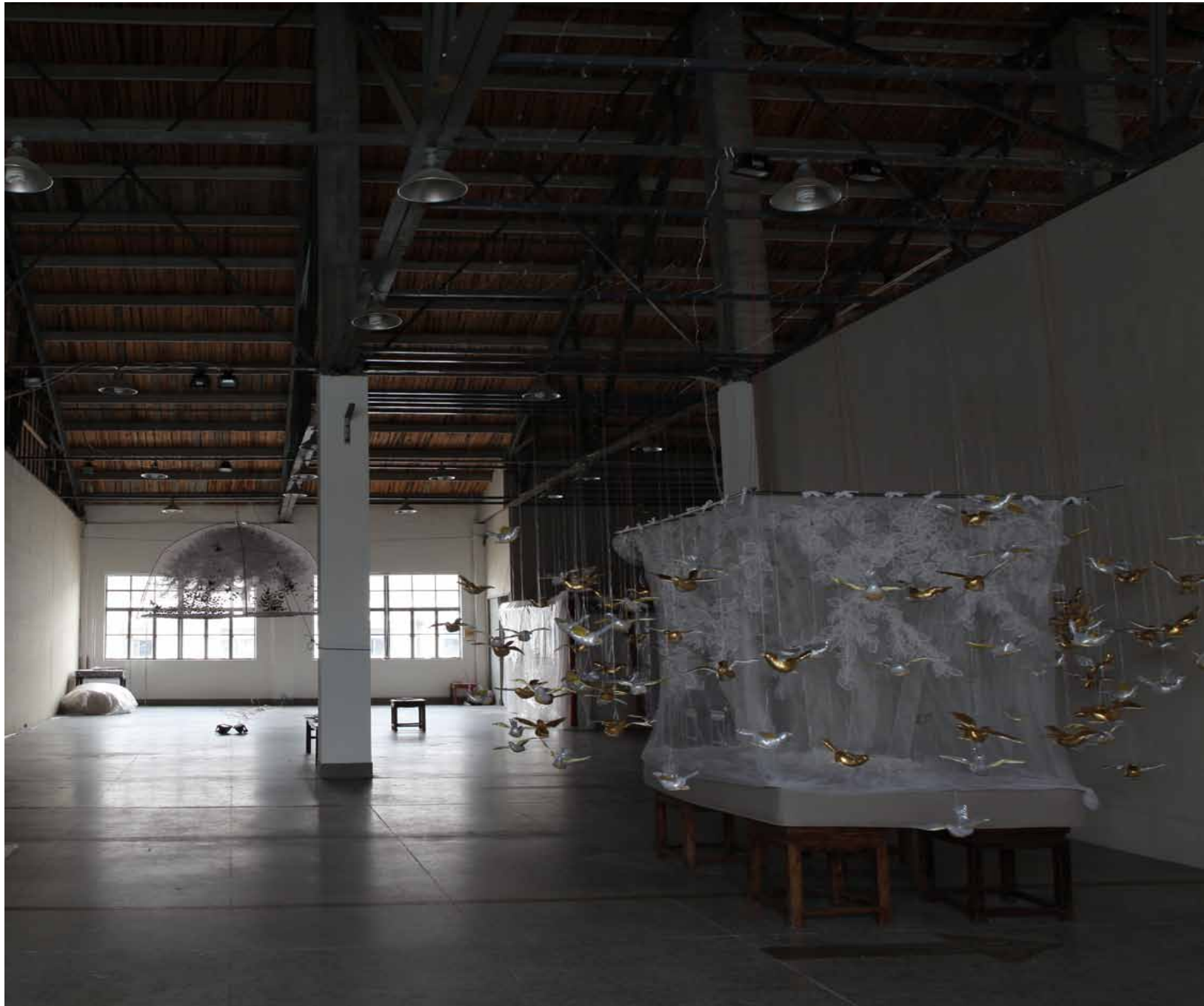
Ji Wenyu & Zhu Weibing
计文于和朱卫兵

ShanghART
香格纳画廊

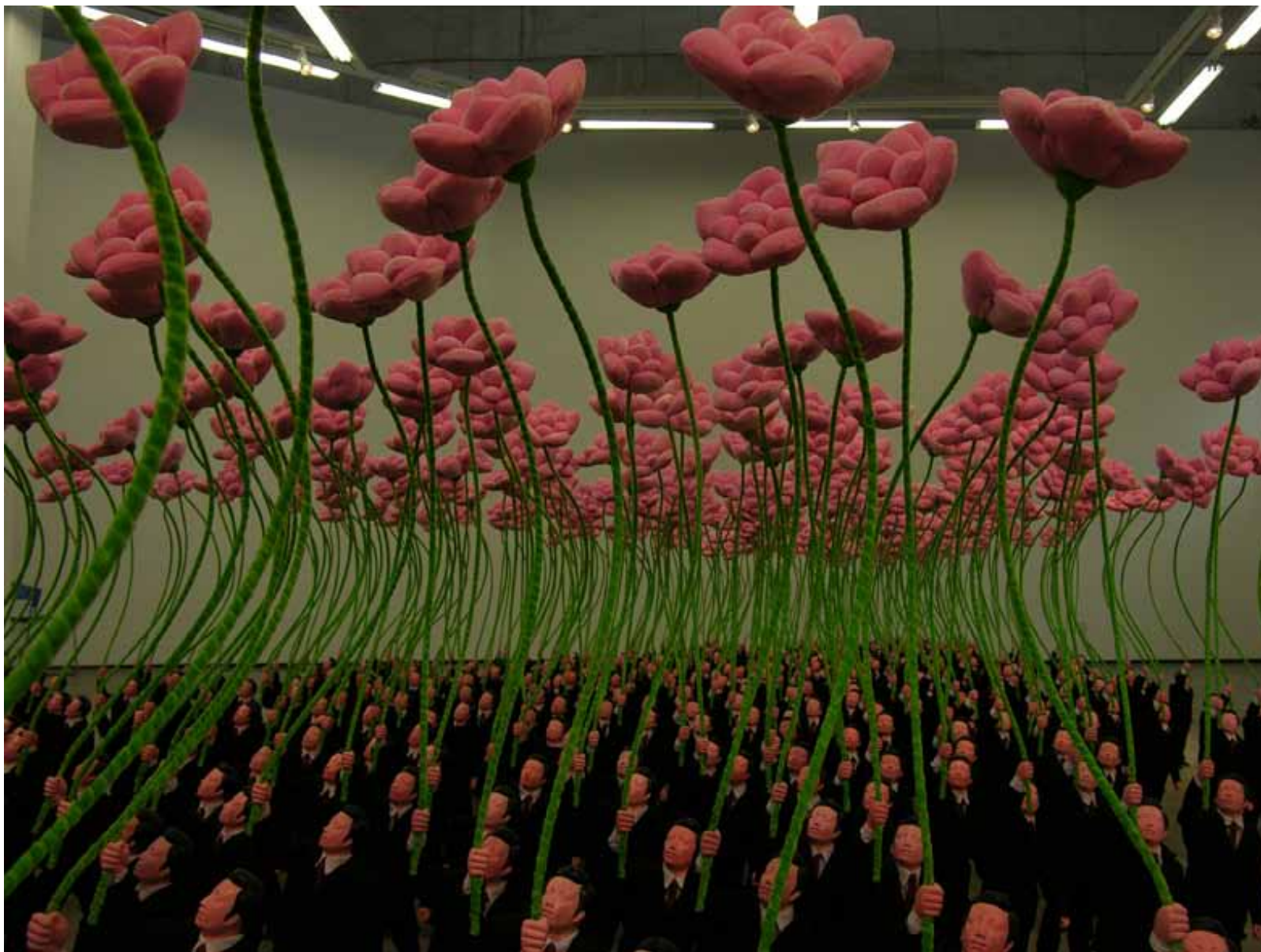


In recent years, Ji Wenyu has continued to create "Kitsch Art", similar to his previous works, with the collaboration and help of his wife Zhu Weibing. Their soft fabric sculpture provides insight into the unique charm of another art language. This form seems "the only one" of its kind in the contemporary art world. It is not by chance that they chose cloth as a medium. Zhu Weibing has been engaged in the clothing design industry for a long time now. The cloth is soft, gentle, and easy to shape. It corresponds with and mirrors Ji Wenyu's personality and art spirit as well. Through their own idea, design, and handmade production, using different characteristics of different cloth textures, the couple builds a landscape style garden with a stage like display, and typical "Chinese" puppets. The sculpture ridicules the present ideality and the absurdity of a prosperous modern society. As spectators of the world, this is what they want.

Ji Wenyu (b. 1959), Zhu Weibing (b. 1971), they began cooperation of creating soft sculpture in 2003, currently work and live in Shanghai. Recent exhibitions include: Time of the Dragon - Contemporary Art from Shanghai, Rauma Art Museum, Finland (2012); Ji Wenyu & Zhu Weibing: Follow! Follow! Follow! ShanghART Gallery, Shanghai (2011); BONSAI DE LA CHINO-Exposicion de chino de los artistas contemporaneos Nominado, Museum of Modern Art in Valencia, Spain(2011); The Butterfly Effect, An Artistic Communication Project of Cross Strait Four Regions, He Xiangning Art Museum, Shenzhen (2010); The 6th Asia Pacific Triennial of Contemporary Art (APT6), Queensland Art Gallery and Gallery of Modern Art, Australia (2009); Harmony and Difference, East China Contemporary Sculpture Invitational Exhibition, Art Space of Fine Arts College from Shanghai University, Shanghai (2007).



Artist Studio



people Holding Flowers 17×11×102cm× 400pcs 2007



Follow Follow Follow - Solo exhibition 2011



Climbing Up The Mountain, Climbing Down The Mountain Soft Installation 1813×94×20cm 2009



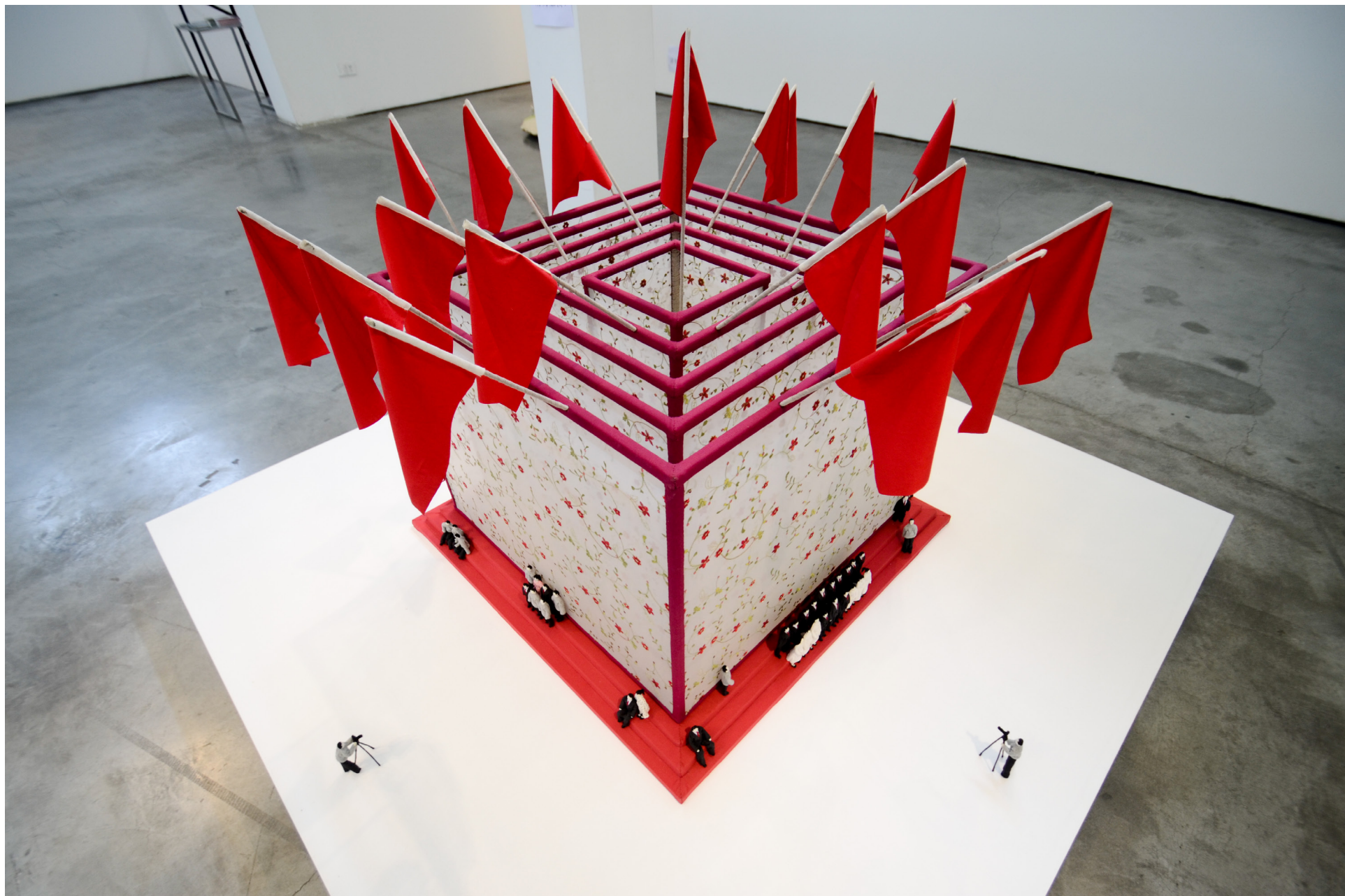


Image Soft Installation 103×121×121cm 2010



Impressions of "Bu Nian Tu" Installation 103x69x105 2011





Die in Glory Installation 62x93x127cm 2012



Survive With Dishonor Installation 78x135x38cm 2012



Construction Site Installation 56×77×137cm 2012

ShanghART

香 格 纳 画 廊

ShanghART Gallery & H-Space

香格纳画廊和 H 空间

莫干山路 50 号, 16 和 18 号楼, 上海, 中国 200060

50 Moganshan Rd., Bldg 16&18, Shanghai 200060, China

T: +86 21-6359 3923 | F: +86 21-6359 4570 | info@shanghartgallery.com

ShanghART Taopu

香格纳展库

武威路 18 号 (近祁连山路) 8 号楼, 上海, 中国 200433

Bldg 8, No.18 Wuwei Road (near Qilianshan Road), Shanghai 200433, China

T: +86 21-3632 2097

ShanghART Beijing

香格纳北京

朝阳区机场辅路草场地 261 号, 北京, 中国 100015

261 Cao Chang Di, Old Airport Road, Chaoyang District, Beijing 100015, China

T: +86-10 6432 3202 | F: +86-10 6432 4395 | infobj@shanghartgallery.com

www.shanghartgallery.com