

CLUTCH

ShanghART Gallery | Press Release

Duration: 6 Sep. - 8 Nov. 2013, Daily 10AM-6PM

Opening: 6 Sep. 2013, Friday, 6:00- 9:30PM

Artists: BIRDHEAD, CHEN Xiaoyun, DING Yi, GENG Jianyi, HU Jieming, JI Wenyu-ZHU Weibing, KAN Xuan, LIANG Shaoji, SHEN Fan, SUN Xun, TANG Maohong, XU Zhen, YANG Fudong, YU Youhan, YANG Zhenzhong, ZHANG Ding, ZHANG Enli and ZHOU Tiehai

Venue: ShanghART H-Space, Bldg 18, No. 50 Moganshan Rd., Shanghai

Contact: t. +86 21-6359 3923 | info@shanghartgallery.com | www.shanghartgallery.com



The exhibition "Clutch" is held from September 6, 2013. The show displays for the first time the brand new look of ShanghART H-Space after the recent renovation. The exhibition invites BIRDHEAD, CHEN Xiaoyun, DING Yi, GENG Jianyi, HU Jieming, JI Wenyu and ZHU Weibing, KAN Xuan, LIANG Shaoji, SHEN Fan, SUN Xun, TANG Maohong, XU Zhen, YANG Fudong, YU Youhan, YANG Zhenzhong, ZHANG Ding, ZHANG Enli and ZHOU Tiehai to show individual as well as collective works from both earlier and more recent years. Many of those works were seldom accessible to the public before. The audience is allowed the chance to judge the difference between old and new works and to discover the deeper context within, hence the exhibition title "Clutch".

The word "Clutch" refers to a mechanical device that helps a car run smoothly by providing the transmission of power from one component to another. However, it is easy to likewise find the so-called "Clutch Phenomenon" in the art world. From an intermediate perspective, it can be observed in the relationship between the artists and the gallery. The power transmitted promotes the artists' creations, while at the same time lifting the gallery to new heights. Meanwhile, one can also find the phenomenon to be present in different periods of each of the artists' works, as well as in the contrast or links between their old and new pieces. Through each transmission of motion and power the connection forms a clear relationship between the various works.

Press Enquiries

press@shanghartgallery.com

t. +86-21 6359 3923

1. BIRDHEAD



1. **Bird Head 2005 - Suitcase - 2**, 2005
Suitcase with circa 19 unique photos, framed,
31×21cm each, Edition of 1, BHU060

2. **The Light of Eternity: Two Peaks Piercing the Clouds - Third Time For Dayi**, 2013
Photography installation, 83.5×157.5×5cm, Edition of 1
BH_3618

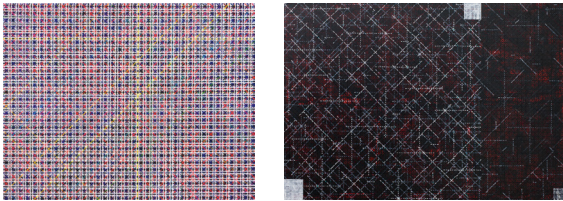
2. CHEN Xiaoyun



1. **Untitled**, 2002
Colour Inkjet, 40×60cm, Edition of 8
CXY_2086

2. **Addicted to the Other**, 2013
Colour Inkjet, 109×137cm, Edition of 5
CXY_8301

3. DING Yi



1. **Appearance of Crosses 1991-3**, 1991
Acrylic on Canvas, 140×180cm
DY_2577

2. **Appearance of Crosses 2012-8**, 2012
Acrylic on Canvas, 140×200cm
DY_5463

4. GENG Jianyi



1. **Choice 1**, 2001
Wooden box, walnut, 23×33×18cm
GJYC02

2. **Invisible**, 2013
Stainless steel plate print, wooden frame
Variable dimensions (39×32.5cm, 68×52cm)
GJY_6355

5. HU Jieming



1. **The Cities in the Wind**, 2001~2013 (video was made in 2001)
Single-Channel video installation, 5' 20", Edition of 3
OVERALL 24×33×51cm, HJM_8993

2. **The Remnant of Images**, 2006
Old archive cabinets, LED/LCD screens, metal frames, electrical
transmission, PLC control system, plexiglass, Edition of 3
OVERALL 136×76×46cm, HJM_3951

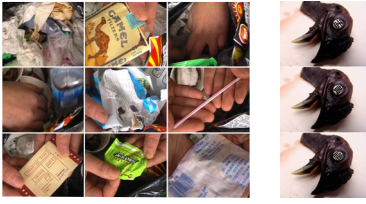
6. JI Wenyu - ZHU Weibing



1. **Our Life Is Sweeter Than Honey**, 2002 *JI Wenyu
Print and mirror on wood, 53×120cm, Edition of 5
JWY78

2. **There Live Wild Animals**, 2012 *JI Wenyu - ZHU Weibing
Synthetic fibre carpet, cloth, stainless steel, wire
200×200×22cm, Edition of 1
J-Z_0165

7. KAN Xuan



1. **Garbage**, 1999
Single-Channel Video, 11 minutes, Edition of 1
KX_0079

2. **Meng Huangyou**, 2010
Single-Channel Video, 6 minutes, Edition of 1
KX_9098

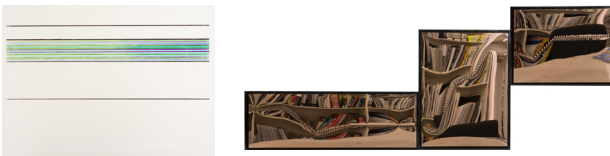
8. LIANG Shaoji



1. **Nature Series No.32 / Wall**, 1998
Silk, cocoons, bricks, single-channel video screen, Variable dimensions
LSJU021

2. **Pupupu - B**, 2011~ 2012
Silk, Silkworm Cocoon, Moth, Voice Record, 120x50x43cm
LSJ_1904

9. SHEN Fan



1. **Long-Cherished Wish.A.III.**, 1987
Marker pen on Paper, 76.5x108cm
SF_7769

2. **Mirror-Landscape-0510**, 2013 29x75x4.7cm SF_2177
3. **Mirror-Landscape-0612**, 2013 39x52x4.7cm SF_6329
4. **Mirror-Landscape-0002**, 2013 36x46x4.7cm SF_5551
* Golden Specular Stainless Steel

10. SUN Xun



1. **Instantaneous Power**, 2003
Rollerball pen on paper & Single-Channel Animation
21x29.7cm x26pcs, 4' 20", SX_4674, SX_6696

2. **Poster of BaYa**, 2001
Rollerball pen on paper, 26.7x39cm x2pcs, SX_8865

3. **21 Ke Outline Sketch**, 2006~2010
Pencil on paper, 29.7x42cm x9pcs, 29.7x21cm x3pcs
29x21cm x2 pcs, 26x19cm x1piece, SX_9197

11. TANG Maohong



1. **A Part of Classics**, 2003
Inkjet, 11.4x6.2cm (each), Edition of 10
TMH_2838, TMH_0222, TMH_1149
TMH_4111, TMH_2330, TMH_1812

2. **Exclave Con - Rehearsal 1**, 2013
Mixed Media, print, nylon carpet, rubber, 190x248cm, Edition of 1
TMH_7656

12. XU Zhen / Madeln Company



1. **The Last Few Mosquitos**, 2005 * XU Zhen
Electro-mechanical objects, plastic, metal, cooper, red fluid & etc.
4x5x5cm, Edition of 30, XZ41

2. **Play - Missile of Love**, 2013
* XU Zhen Produced by Madeln Company
Synthetic fibre carpet, cloth, stainless steel, wire, 420x110x80cm
MI_6023

13. YANG Fudong



1. **After all I didn't force you**, 1998
Single-Channel Video, 2' 30", Edition of 5
YFDv004

2. **Manifold Little Hills**, 2006
Single-Channel Film, 16mm film transfer to DV, 2' 53", Edition of 6
YFD_8704

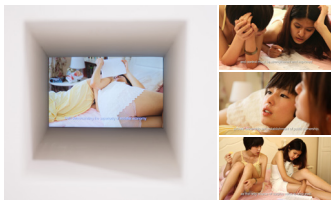
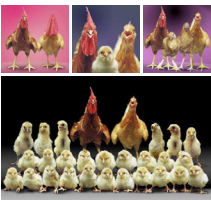
14. YU Youhan



1. **Wukang Mansion**, 1983
Oil on Canvas, 58x68.5cm
YYH_6823

2. **2013.8.25**, 2013
Acrylic on Canvas, 79.5x91cm
YYH_1641

15. YANG Zhenzhong



1. **Lucky Family**, 1995
Inkjet, 60x60cm x3pcs, 60x100cm x1piece, Edition of 10
YZZ01-1~YZZ01-4

2. **Exam**, 2012
Single-Channel video installation, 23' 37", Edition of 10
YZZ_1988

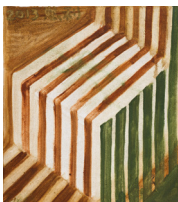
16. ZHANG Ding



1. **200305**, 2003
Acrylic, watercolour and pencil on canvas, 143.5x143cm
ZD_4906

2. **Potato**, 2013
Tinted copper and 24K gold, 11x21x12cm, Edition of 3
ZD_0350

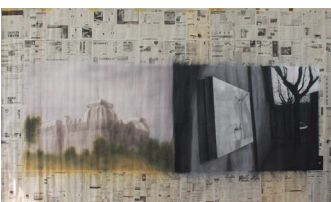
17. ZHANG Enli



1. **Miniascape**, 2003
Oil on Canvas, 520x327cm
ZELN053

2. **The Partial**, 2013
Oil on Canvas, 42x37.5cm
ZEL_1521

18. ZHOU Tiehai



1. **Untitled**, 2001
Acrylic (airbrush) on newspaper, 307x526cm
ZTH148

2. **Un/Limited Space: the Shower**, 2013
Oil on canvas, 100x67cm
ZTH_1819

