

JIANG Pengyi

Dark Addiction

The Suspended Moment

Intimacy



Dark Addiction

这个系列照片是采用物影印像法長時間曝光制作而成。一只、几只或者数十只萤火虫，装入有黑白胶片的暗箱中，任它们自由爬行或者飞行，持续的发出求偶的闪光信号。在其短暂的生命期里，萤火虫在底片上留下某一段、或者一生的，可见的生命轨迹。

The series of Dark Addiction was taken by the technique of direct impression method under long-time exposure. One or few or a dozen of fireflies were incased in the camera obscura with black and white film. Let them crawl and fly freely, and they continued to give a flashing mating beacon to each other. In their short life, the fireflies left the visible path of a period or the whole life on the film.



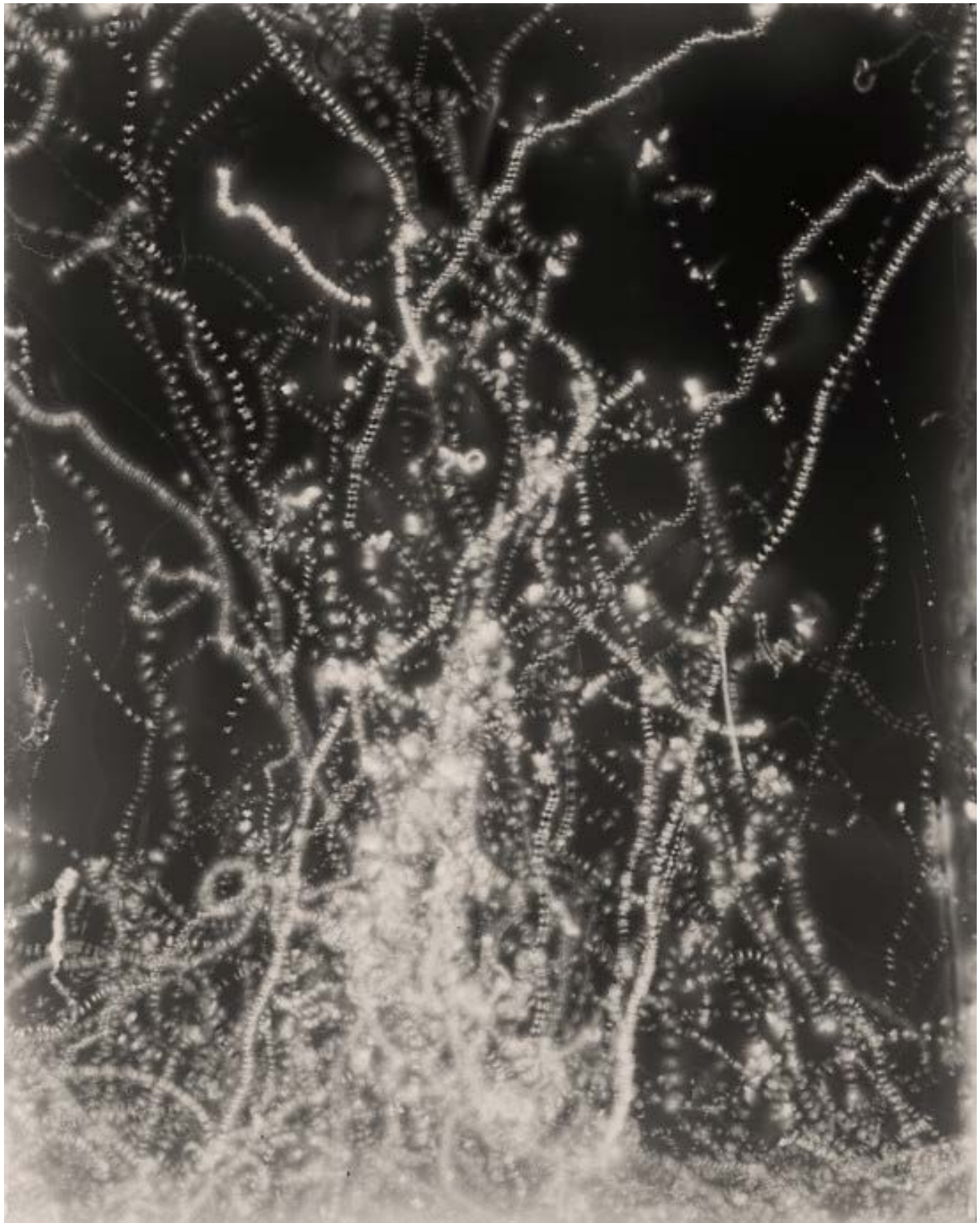
Dark Addiction 1H43' 24"
2013
178*300cm
C-print | Mounted on Aluminium Composite Panel
Edition of 5 + 2AP
JPY_3824



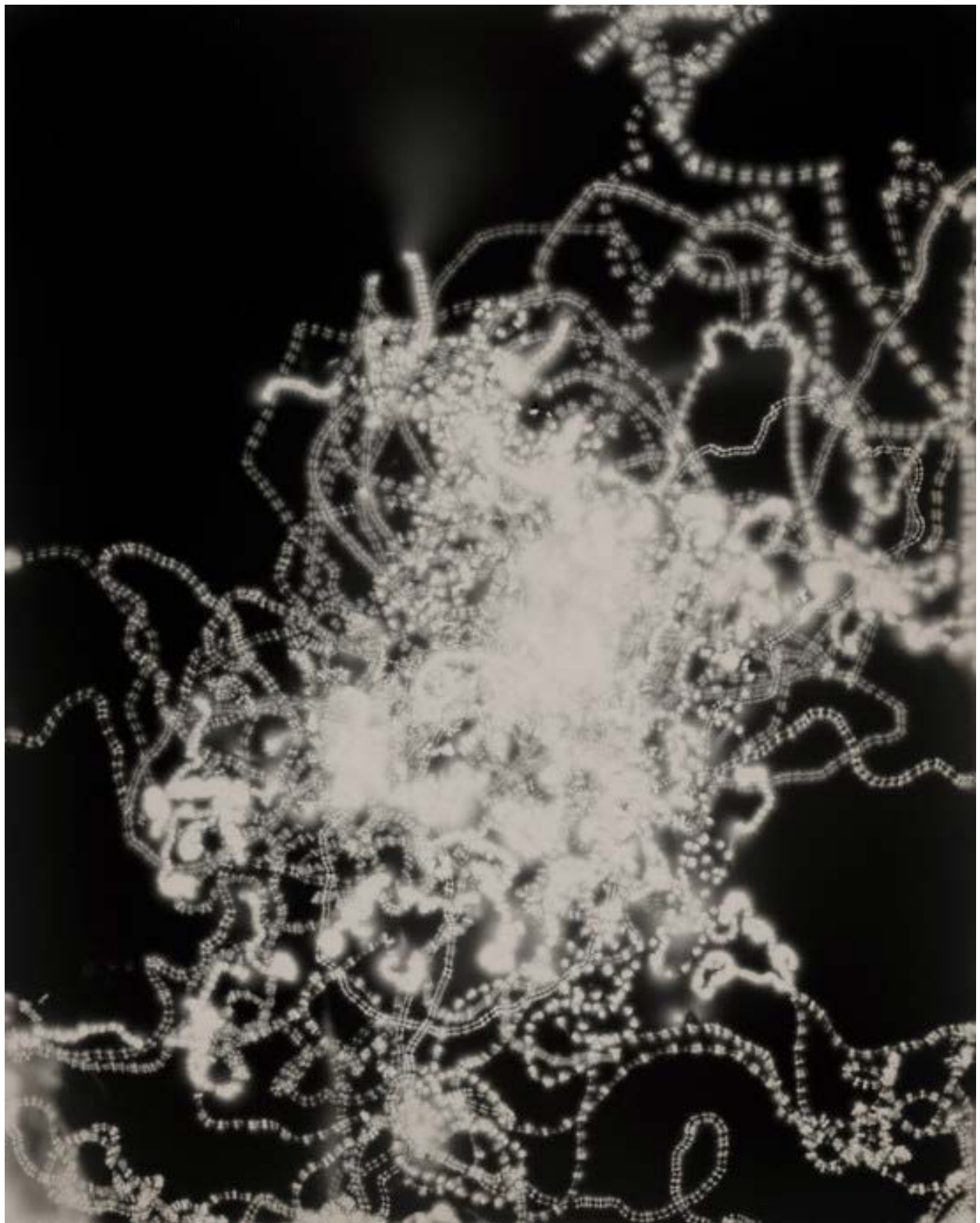
Dark Addiction 7'51"
2013
120*150cm
Archival Inkjet Print
Mounted on Aluminum Panel and Black Acrylic Glass
Edition of 5 + 2AP
JPY_4328



Dark Addiction 22H14' 08"
2013
223*178cm
C-print | Mounted on Aluminium Composite Panel
Edition of 5 + 2AP
JPY_7165



Dark Addiction 1H 45'16"
2013
187.6*150cm
Archival Inkjet Print
Mounted on Aluminum Panel Black Acrylic Glass
Edition of 5 + 2AP
JPY_8104



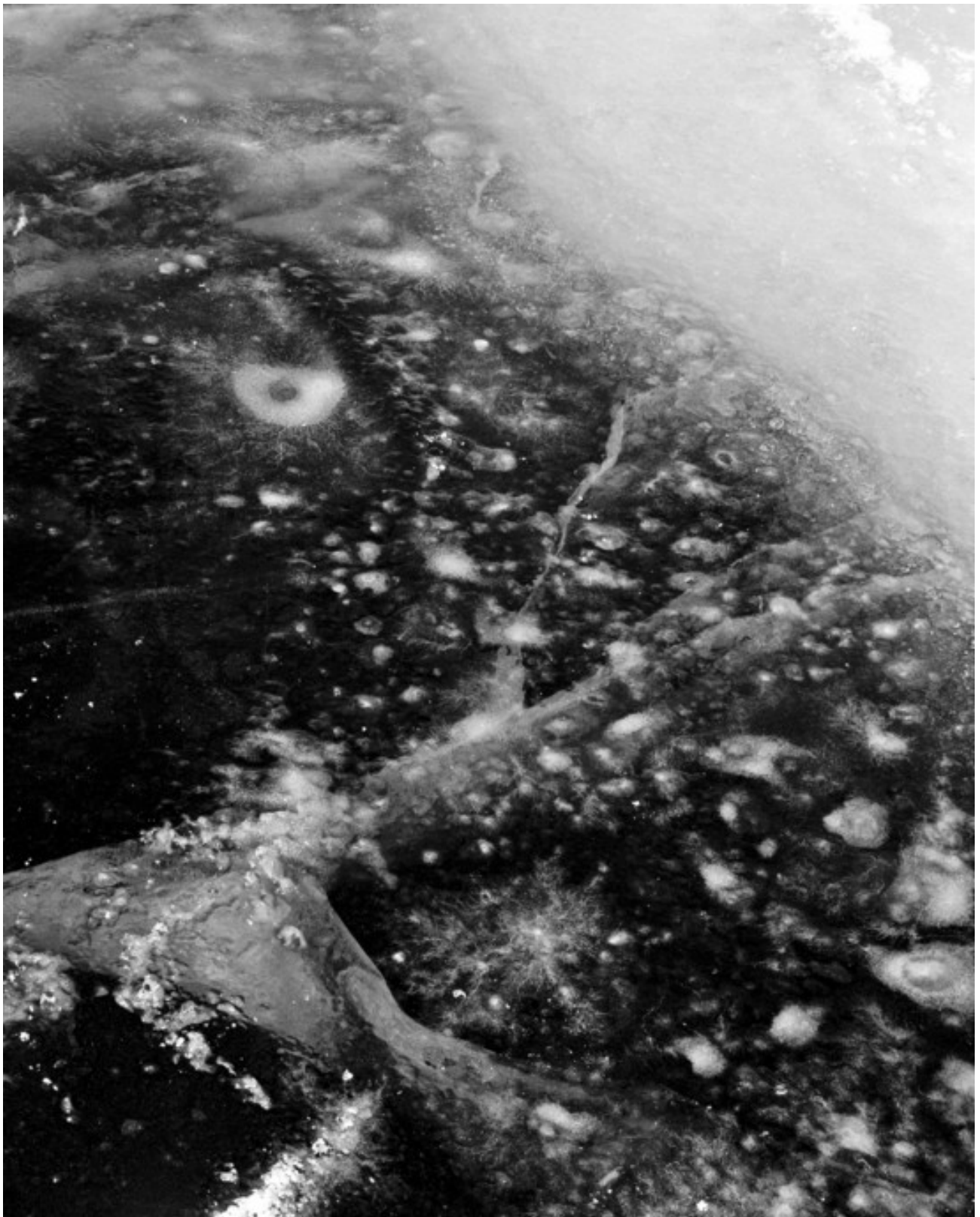
Dark Addiction 17'33"
2013
187.6*150cm
Archival Inkjet Print | Mounted on Aluminum Panel and Black Acrylic
Edition of 5 + 2AP
JPY_9938



The Suspended Moment

这组作品拍摄于隆冬时期的北方水库。水作为一种随气温而变化的物质，由于结冰过程中的相互挤压与上下温度的差异，会形成了看来颇为壮观的图像。但实际上，我们看到的只是其在某个时间呈现的偶然形态。

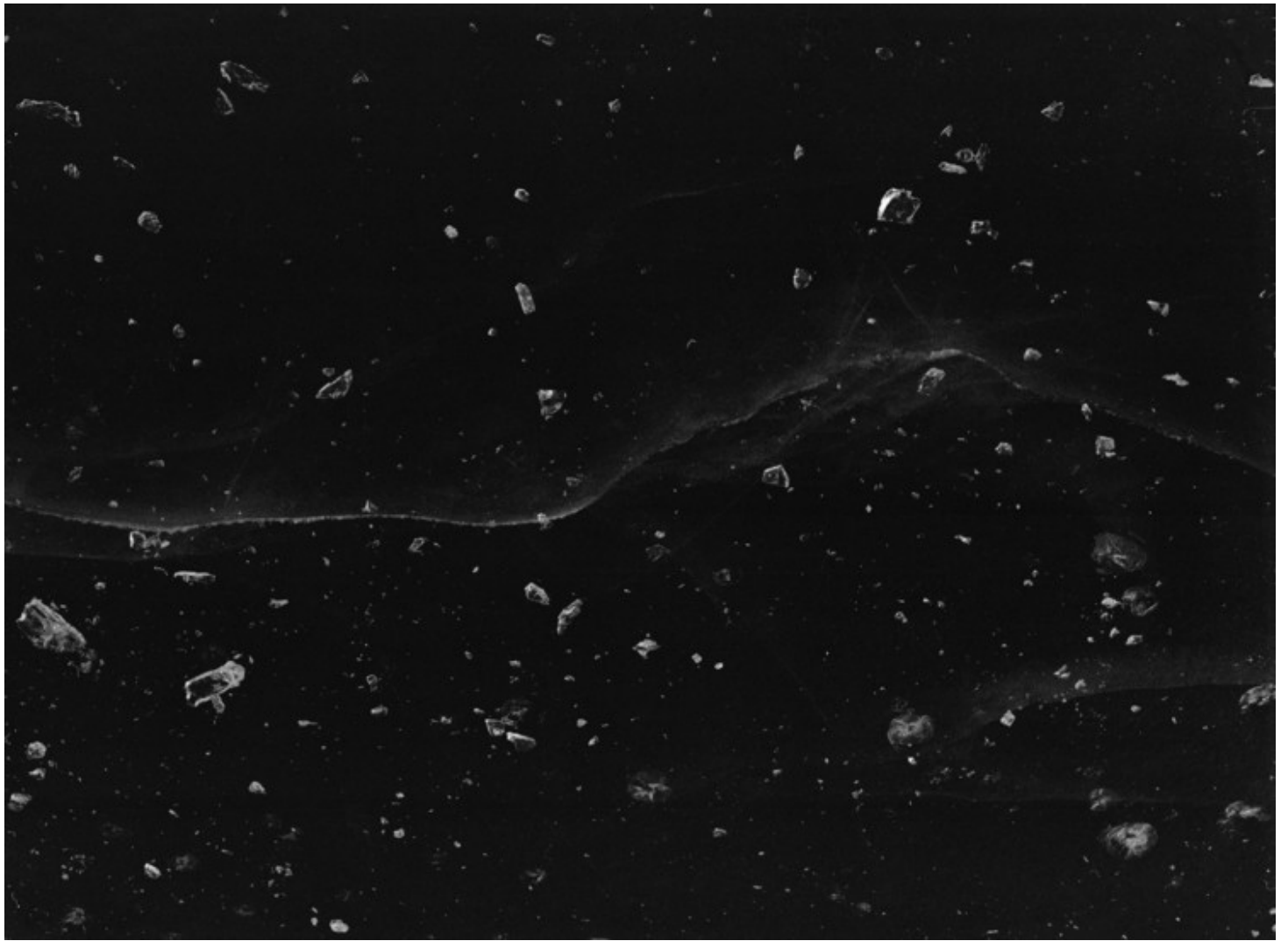
The Suspended Moment was shot in northern reservoir in mid-winter. As a material changes with the temperature, water forms into a spectacular image because of squeezing and the difference of temperature of different layers. But in fact, what we see is only the incidental pattern in a certain moment.



The Suspended Moment No.5
2013
125*100cm
Archival Inkjet Print
Mounted on Aluminum Panel
Edition of 5 + 2AP
JPY_6435



The Suspended Moment No.1
2013
150*119cm
Archival Inkjet Print
Mounted on Aluminum Panel
Edition of 5 + 2AP
JPY_2471



The Suspended Moment No.4
2013
119*150cm
Archival Inkjet Print
Mounted on Aluminum Panel
Edition of 5 + 2AP
JPY_2159



The Suspended Moment No.3
2013
119*150cm
Archival Inkjet Print
Mounted on Aluminum Panel
Edition of 5 + 2AP
JPY_6769

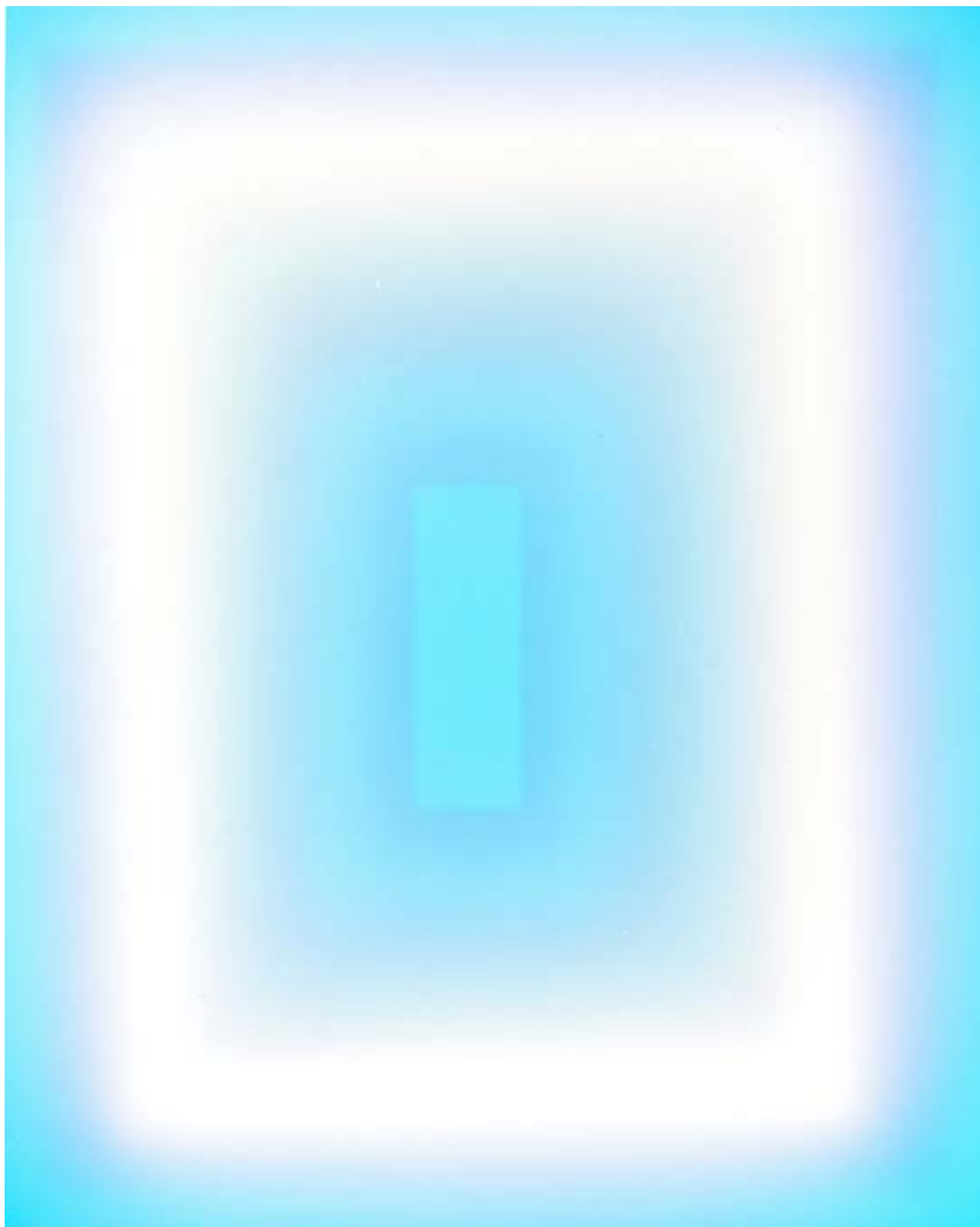
Intimacy

萤光纸与摄影胶片，一个吸光后释放光，另一个接触到光后通过化学反应保留着光的影子。如何将这两种敏感的不同质的感光材料，在相互触碰的过程中，依距离的忽远忽近，在未知的底片上留下潜在的不可改变的影响？以及在制做过程中，人为对它们每一秒的控制。我称之为是用摄影的方式进行的光的绘画。

Fluorescent paper and Photographic film, the former emits light after absorbing, while the other will generate some chemical reaction and keep the reflection when exposed to the light. How to leave some potential unchangeable influence on the unknown negative according to the various distances of such different sensitive photographic materials, as well as the every second's manual control during the production process? I call it painting with light in the method of photography.



Intimacy No.6
2014
185*145cm
Archival Inkjet Print
Mounted on Aluminum Panel and Acrylic Glass
Edition of 5 + 2AP
JPY_1682



Intimacy No.2
2014
185*145cm
Archival Inkjet Print
Mounted on Aluminum Panel and Acrylic Glass
Edition of 5 + 2AP
JPY_0890



Intimacy No.4
2014
188.5*148.5*5cm
Archival Inkjet Print
Mounted on Aluminum Panel and Acrylic Glass
Edition of 5 + 2AP
JPY_9003



Intimacy No.3
2014
188.5*148.5*5cm
Archival Inkjet Print
Mounted on Aluminum Panel and Acrylic Glass
Edition of 5 + 2AP
JPY_7143