



陆垚 | 回声

LU Lei | Echo

ShanghART
香格纳画廊

作为陆垚在香格纳画廊的第一次个展，此次个展源于艺术家 2005 年的未完成作品《广场》，通过场域的构成勾勒出“回声”产生的形态和质感。在这次展览中，艺术家从回声的经验出发，使用了鸽子，蝙蝠，莫尔斯码等这些艺术家一直喜欢使用的形象和元素，立体的阐述了他概念里的“广场气氛”。

This exhibition is Lulei's first solo exhibition in ShanghART Gallery, it is derived from the artist uncompleted work The Square in 2005. Through outlining the surrounding atmosphere, the exact existing form and texture of 'Echo' are described and illustrated. In this exhibition, the artist stems from the experience of 'Echo', using Pigeons, Bats, and Morse code, these images and elements artists like to use, spatially evaluate 'square aura' in his concept.









广场 | 2015 (恢复并完善 2005 年作品)

装置 | 镀锌油桶, 开盘录音机, 磁带, 自动控制系统,
不锈钢旗杆, 灰色丝质旗帜, 鼓风机, 不锈钢锻造凹镜,
U 型夹 | 尺寸可变

The Square | 2015

Reproduce and complete the work made in 2005

Installation | Galvanized barrel, reel to reel master
recorder, Scotch magnetic tape, Sound installation,
Flagpole made of stainless steel, Gray silk banner, Air
blower, Concave mirror forged by stainless steel, U-
clip | Variable size (Block Size: 385x280x580cm)

《广场》

这件作品是对 2005 年广场作品的补充完善。艺术家对广场这一概念进行了描述。100 个镀锌油桶和播放着鸽子声音的高音喇叭组成的包豪斯式大楼，与一个巨大的凹镜对抗着，而凹镜下方竖立着一面飘扬的灰色旗帜，好像带人回到了黑白照片里失色的广场。

The Square

This work is the complement of the work *The Square* in 2005. The artist gives the description of the square concept. 100 Galvanized barrels and high-pitched loudspeakers that play the pageant sound consist of the Bauhaus building, which conflicts with a huge concave mirror. In addition, a gray flag, under the huge concave mirror, is flying, which seems bring people to the faded square in the black and white photo.











夜 | 2015
装置 | 百年房梁木, 铁锻造, 铸铝雕塑, 万向轮
210x210cm

The Night | 2015
Installation | 100 years old red pine wood, Forged iron,
Aluminum casting sculpture, Universal wheel | 210x210cm

《夜》

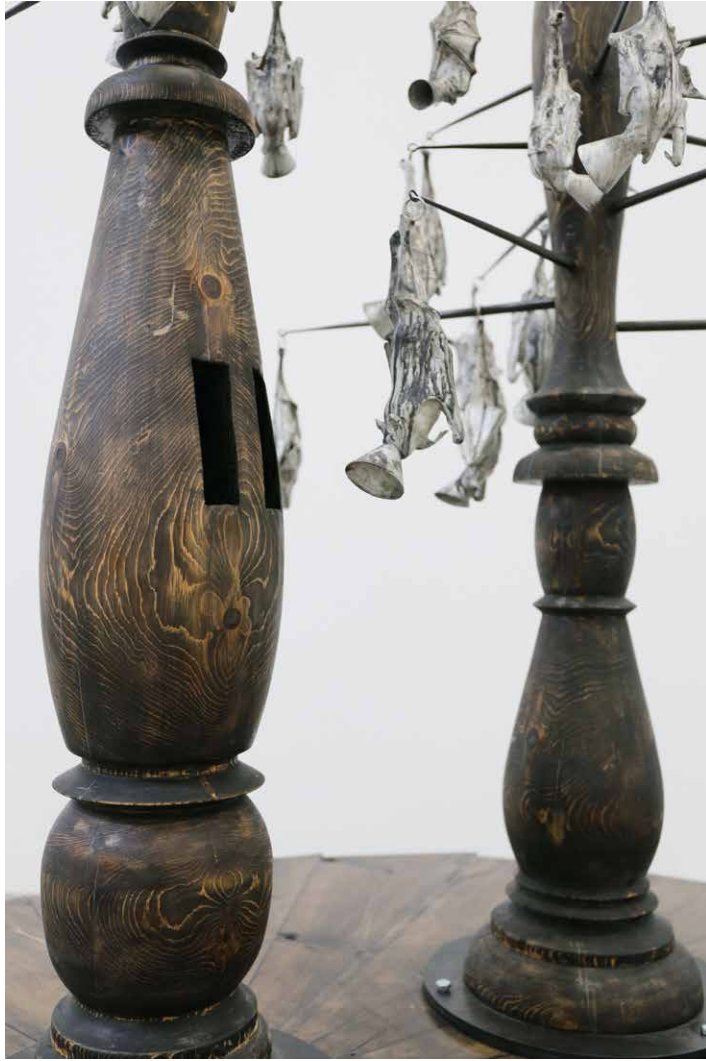
两个好似国际象棋中的“国王”、“王后”棋子的衣架及倒挂的蝙蝠构成了这件作品。“国王”与“王后”雕像由一根上百年的房梁制作而成，被放置在高 30 公分的呈黄金螺线状的底座上，视觉上呈现出旋动的感觉。在他们的周围倒挂着铸铝的 25 只分 9 种不同形态的蝙蝠。每只蝙蝠的嘴都被表现成喇叭，像断断续续的发射着信号。“国王”，“王后”与沉睡的蝙蝠相互交映，营造出一种荒诞却又静谧的场景。

The Night

Two clothes hangers seem like the 'King' and 'Queen' in international chess and the upside-down bats are composed of this work. 'King' and 'Queen' sculptures are made by a hundred years beam, which are placed on a 30cm height base in golden spiral. The audience could feel the sense of swirling from it. 25 bats in 9 different forms hang upside-down around 'King' and 'Queen'. The bats are made of casting aluminium and each mouth of them are exaggerated to the horn, which seems intermittently transmit the signal. 'King', 'Queen' and the sleeping bats interact with each other, creating absurd but tranquil scene.









佯装自大狂 | 2015

装置 | 铸铝雕塑，表面腐蚀，莫尔斯码控制器，白炽灯 | 尺寸可变

Pretending Egomania | 2015

Installation | Aluminum casting sculpture, Surface corrosion, Modulation Morse Code controller, incandescent light bulb | Variable size

猪 (NO MEMORY): 156x72x161cm;

狗 (NO SMELL): 100x65x140cm;

老鼠 (NO CONSCIOUS): 90x55x173cm;

驴 (NO WORDS): 174x78x230cm;

熊 (NO SIGHTS): 185x110x205cm

《佯装自大狂》

“猪”，“狗”，“老鼠”，“熊”，和“驴”，这五种在传统雕塑造型中不作为光辉正面使用的形象，被艺术家削去五官只保留了听觉（耳朵），并站在铸铝下水道形状的底座上。好似伫立在广场上骄傲的雕像。削去的五官被喇叭形面罩所代替，并从中发射出不断闪烁的莫尔斯电码，隐秘地向外界分别传递着 NO MEMORY（无记忆），NO SMELL（无嗅觉），NO CONSCIOUS（无感知），NO SIGHTS（无视觉）和 NO WORDS（无表达）。这五只被侵蚀褪去颜色的动物，扮演着自大与颓废的矛盾体。

Pretending Egomania

'Pig', 'Dog', 'Mouse', 'Bear' and 'Donkey', these five animals, who are not the aesthetic symbol in sculpture, are deprived their five senses only left the listening (ear), and stand on the base in cast aluminum sewage. They seem as the proud sculptures stand on the square. The deprived five senses are replaced by the Trumpet - shaped mask, from which the continuously flashing Morse code is transmitted and secretly passed to the outside world: no memory, no smell, no conscious, no sights and no words, separately. These five animals are eroded so as to lose their colors, playing as the arrogant and decadent contradiction.











陆垚 | 简历

基本资料

1972 生于江苏

教育

1998 毕业于中国美术学院雕塑系, 杭州

个展 (主要)

2013 消失于灭点, 陆磊独立项目, 站台中国, 北京

2011 陆磊: 浮冰记, 其他画廊, 上海

2008 在此之前, 陆垚个展, 华联工业中心, 香港

群展 (主要)

2013 李平虎, 李然, 陆垚: 半自动方式, 香格纳北京, 北京

2012 2012 大声展, 未来, 三里屯SOHO, 北京

2011 怎么办?, 恒庐美术馆, 杭州

2010 丛林: 中国当代艺术生态管窥, 站台中国, 北京

2009 刀锋 - 重建雷峰塔, 圣之空间, 北京

2007 业余人间, 站台中国, 北京

2006 第六届上海双年展, 超设计, 上海美术馆, 上海

2004 显微镜·观, 中国当代艺术展, 澳门艺术博物馆, 澳门

2005 第二届中国艺术三年展, 未来考古学, 南京博物院, 南京

2004 迷宫-2004 中国新媒体艺术节, 中国美术学院, 杭州

眨眼录像节, 北京; 上海; 长沙; 杭州

2003 白塔岭, 当代艺术展, 白塔岭艺术空间, 杭州

2002 首届广州三年展——重新解读: 中国实验艺术十年(1990-2000), 广东美术馆, 广州

2001 非线性叙事, 新媒体艺术节, 中国美术学院, 杭州

1999 后感性, 异形与妄想, 北京

1996 现象·影像, 96' 录像艺术展, 中国美术学院画廊, 杭州

收藏

昊·美术馆, 上海

白兔美术馆, 新南威尔士, 澳大利亚

LU LEI Biography

Basic

1972 Born in Jiangsu Province

Education

1998 Graduated from Sculpture Department of China Fine Arts College, Hang Zhou

Solo Exhibitions (Selected)

2013 Disappearing into Vanishing Point, LU Lei Independent Project, Platform China, Beijing

2011 LU Lei: Floating Ice Biography, Other Gallery, Shanghai

2008 Present, LU Lei Solo Exhibition, Wah Luen Industrial Centre, Fotan, Hong Kong

Group Exhibitions (Selected)

2013 Li Pinghu, Li Ran, Lu Lei: Semi-automatic Mode, ShanghART Beijing, Beijing

2012 2012 Get it Louder, Furture, Sanlitun SOHO, Beijing

2011 How We To Do?, Heng Lu Art Museum, Hangzhou

2010 Jungle: A Close-Up Focus on Chinese Contemporary Art Trends, Platform China, Beijing

2009 BLADE – Reconstruct Leifeng Pagoda, SZ Art Center, Beijing

2007 Amateur World, Platform China, Beijing

2006 6th Shanghai Biennale, Hyper Design, Shanghai Art Museum, Shanghai

Microcosm, Chinese Contemporary Art, Macao Museum of Art (Macao Culture Centre), Macao

2005 The Second Triennial of Chinese Art, Archaeology of the Future, Nanjing Museum, Nanjing

2004 Maze-2004 Chinese New Media Art Festival, China Academy Of Fine Arts, Hangzhou

Blink in Video Festival, Beijing; Shanghai; Changsha; Hangzhou

2003 White Tower Mountain (Bai Ta Ling), Contemporary Art Exhibition, Bai Ta Ling Art Space, Hangzhou

2002 The First Guangzhou Triennale - Reinterpretation: A Decade of Experimental Chinese Art (1990-2000), Guangdong Museum of Art, Guangzhou

2001 Non-Linear Narrative, The New-Media Art Festival, China Academy of Fine Art, Hangzhou

1999 Post-Sense Sensibility, Alien Bodies and Delusion, Beijing

1996 Image and Phenomena, 96' Video Art Exhibition, Gallery of China Academy of Fine Arts, Hangzhou

Collections

How Art Museum, Shanghai

White Rabbit Gallery, New South Wales, Australia

ShanghART

香格纳画廊

香格纳北京 ShanghART Beijing

北京市朝阳区机场辅路草场地261号, 100015

No.261 Caochangdi, Old Airport Road, Chaoyang District, Beijing 100015

T: +86-10 6432 3202 | F: +86-10 6432 4395

www.shanghartgallery.com | infobj@shanghartgallery.com