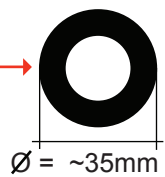
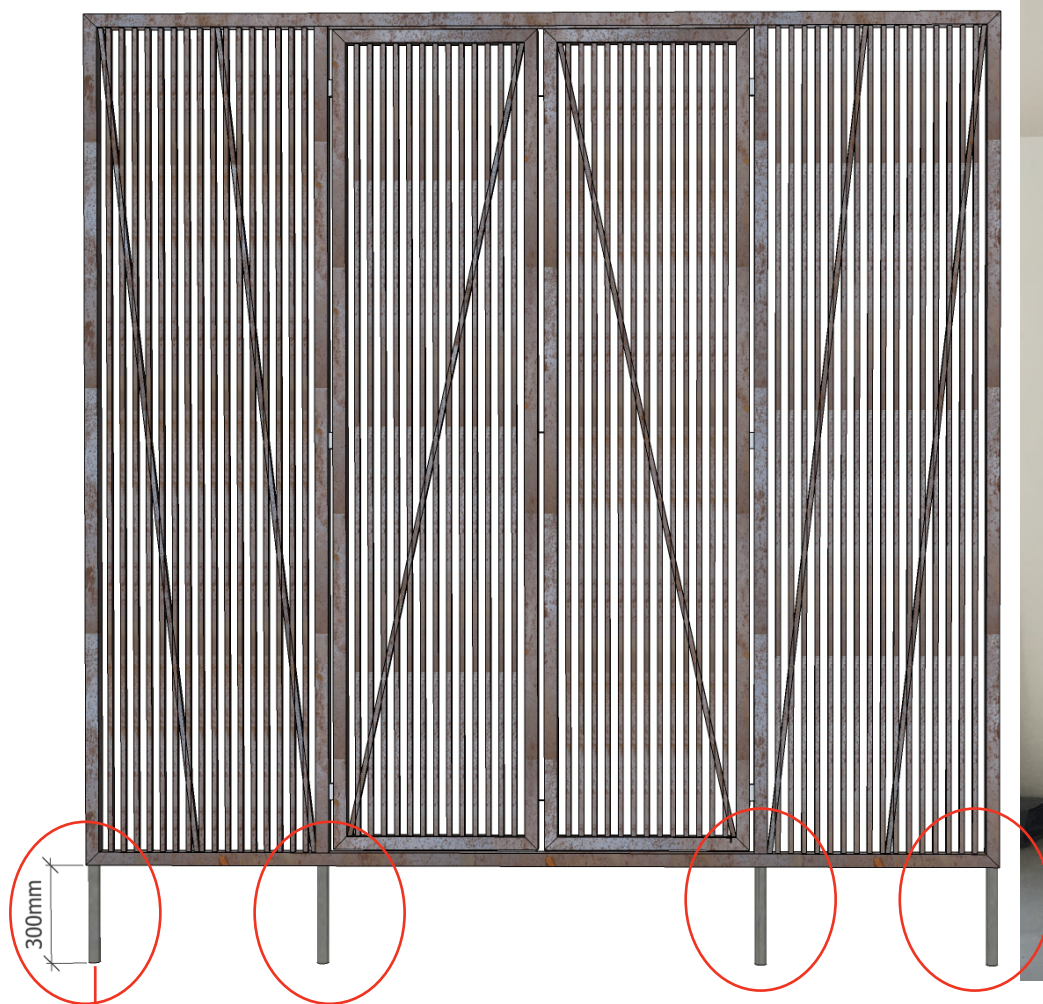


Installation instruction Gate (W) and Gate (Re)



To install the gates, you have to embed them into the ground.

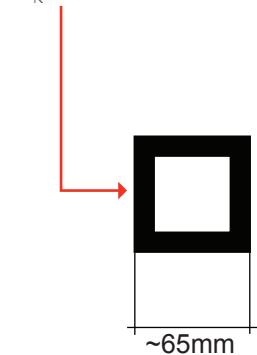
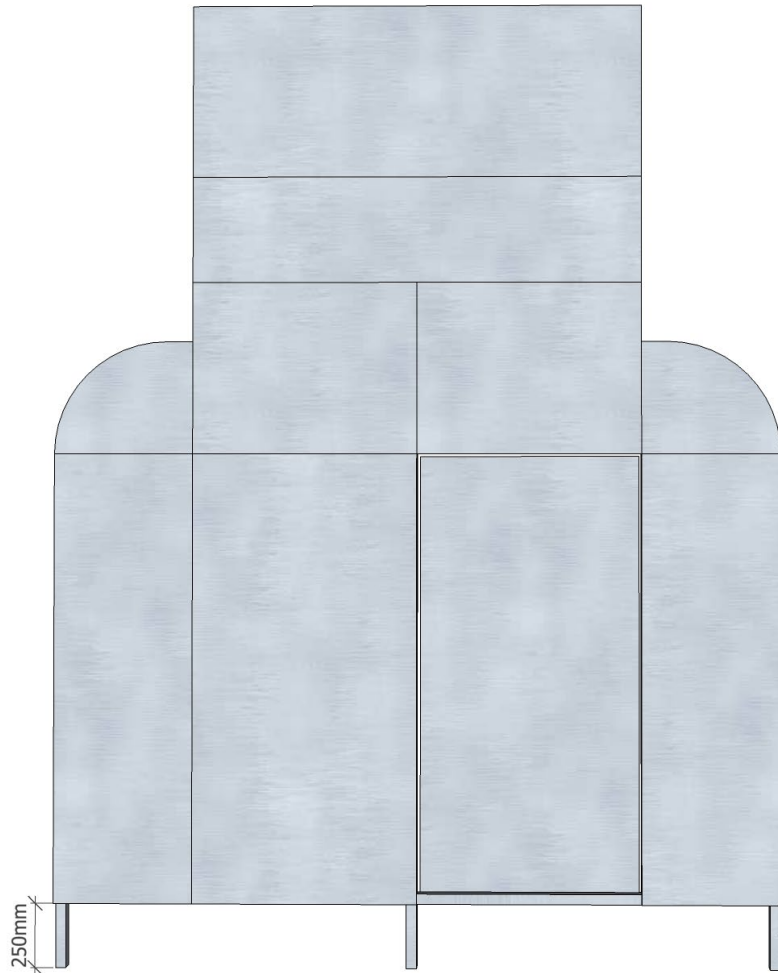
1.) Weld 4 steel tubes onto the gate. Dimensions of the tubes: 300mm in length, not more than 40mm in diameter.

Gate (W)



- 2.) Cut 4 holes into the floor.
- 3.) Place the gate onto the holes.
- 4.) Put water into the holes (To make the material wet & tight)
- 5.) Fill the holes with small stones and concrete/cement.
- 6.) Check if the gate is vertical.
- 7.) After some minutes the gate can stand on its own. After 12-24 hours the concrete/cement is 100% ready.

Gate (Re)



Same process like for Gate (W). For this gate you can use 3 Steel tubes.

- 1.) Weld the 3 pieces onto the gate. Dimensions of the tubes: 250mm in length, not more than 70x70mm.
- 2.) Cut 3 holes into the floor.
- 3.) Place the gate onto the holes.
- 4.) Put water into the holes (To make the material wet & tight)
- 5.) Fill the holes with small stones and concrete/cement.
- 6.) Check if the gate is vertical.
- 7.) After some minutes the gate can stand on its own. After 12-24 hours the concrete/cement is 100% ready.

Gate (Re)



In the end we fixed the doors in a certain position. For this, we welded the hinges. Like this people cannot move the doors by themselves anymore and the work turns into a static sculpture.